

12 Volt Inverter Transmission





Overview

What is a 12V inverter?

A 12V inverter is an electronic device that converts 12V DC power into 220V AC power. This type of inverter is typically used to convert automotive or other 12V DC power sources into standard household or industrial power to power a variety of devices. inverter.com provides inverters from 300w to 3000w.

What is a 12V 300 watt inverter?

12V 300-watt power inverter for sale. The modified sine wave inverter delivers 600-watt peak power and converts 12V DC from battery or car lighter to AC 110V or 220V household power. Come with a USB port, 12V to 110V inverter can be a universal outlet for fast-charging electronic devices.

Can the inverter work with a 12V battery system?

This inverter can ONLY work with 12V battery system. The inverter CAN NOT can in parallel Battery MUST BE connected first 1200 watt is continuous output power, peak power is 3600W Package included: Note: Different types of loads have different starting impulse currents.

What is a 1000 watt 12V power inverter?

1000 watt 12V power inverter for sale, input voltage DC 12V, continuous power 1000W and unload current less than 0.8A. Comes with a USB port, and the 12V to 110V inverters' max efficiency reaches 90%, works at (-10°C, 50°C), and stores at (-30°C, 70°C). Modified sine inverter is compatible with air conditioners, washing machines, ovens, and so on.



12 Volt Inverter Transmission



[Best 12 Volt To 120 Volt Inverter \[Updated: ...\]](#)

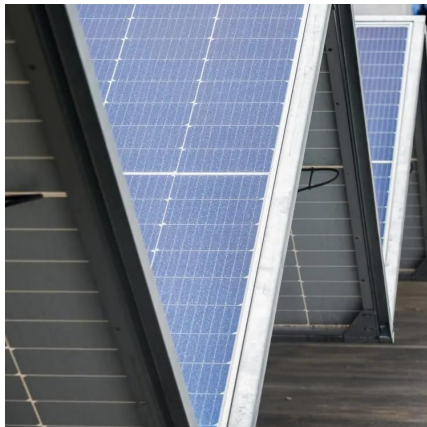
A 12 Volt to 120 Volt inverter is a device that converts direct current (DC) electricity from a 12-volt source into alternating current (AC) electricity at 120 volts.

[Get Price](#)

[Ampinvt 1200W Pure Sine Wave Inverter with AC Charger, ...](#)

About this item This Pure Sine Wave Inverter is a combination of an inverter, battery charger and AC auto-transfer switch. High transfer efficiency is above 90%, complete isolate surge interference of input & output's voltage and current, Impact resistance, super load capacity, ...

[Get Price](#)



Power inverters 12v

This article will mainly focus on micro inverters and discuss the knowledge related to power inverters 12v, in order to enrich the product information needed by home, automotive, and marine buyers and gain a ...

[Get Price](#)

2000 WATT PURE SINE INVERTER WITH AUTOMATIC TRANSFER SWITCH 12 ...

2000 WATT PURE SINE INVERTER WITH TRANSFER SWITCH 12 VDC TO 120 VAC ETL



LISTED , 2000 watt continuous power - 4000 watt surge - Over voltage shutdown

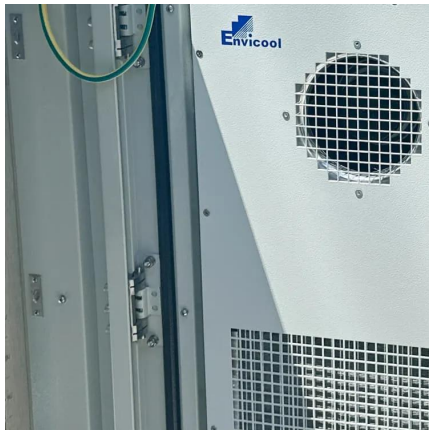
[Get Price](#)



How Does a 12V to 120V Inverter Work?

After waveform generation, the 12V inverter converts low-voltage DC to high-voltage AC (such as 120V or 230V) through a transformer. This process ensures that power ...

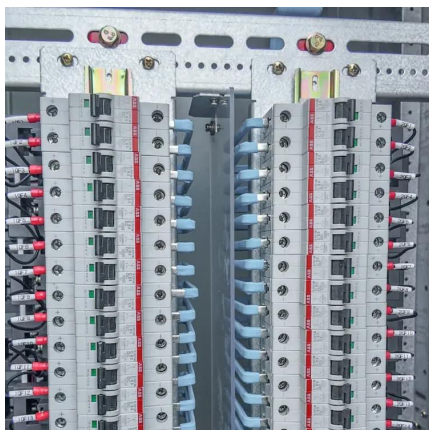
[Get Price](#)



12v Inverter, 12v DC to 110v/220v AC Power Inverter , inverter...

12V power inverter with continuous power 2000 watt, 4000 watt peak power, and max efficiency 90%. The 2000w modified sine wave inverter can convert 12 Volt DC to 110/120 Volt or ...

[Get Price](#)



Power inverters 12v

This article will mainly focus on micro inverters and discuss the knowledge related to power inverters 12v, in order to enrich the product information needed by home, automotive, ...

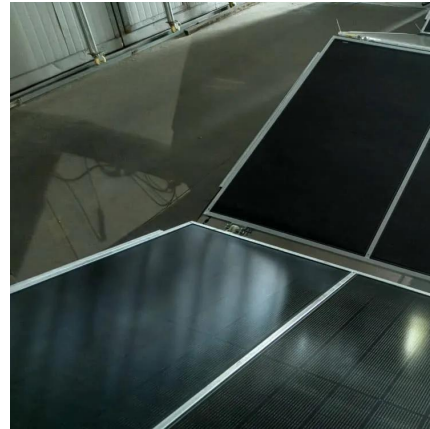
[Get Price](#)



[12V to 120V Inverter: How It Works & What ...](#)

Learn how a 12V to 120V inverter works and why it matters to off-grid solar systems, RVs, and backup power. Get all the key details and pick the right one!

[Get Price](#)



Inverters Guide

Inverters Guide Power inverters, or simply 'inverters', are transformers that will convert a DC current into an AC current, allowing you to run higher voltage equipment from a ...

[Get Price](#)

[Ampinvt 1200W Pure Sine Wave Inverter with AC Charger, ...](#)

About this item This Pure Sine Wave Inverter is a combination of an inverter, battery charger and AC auto-transfer switch. High transfer efficiency is above 90%, complete isolate ...

[Get Price](#)



[How Does a 12V to 120V Inverter Work?](#)

After waveform generation, the 12V inverter converts low-voltage DC to high-voltage AC (such as 120V or 230V) through a transformer. This process ensures that power can be effectively delivered ...

[Get Price](#)



[Best 12 Volt To 120 Volt Inverter](#) [\[Updated: December 2025\]](#)

A 12 Volt to 120 Volt inverter is a device that converts direct current (DC) electricity from a 12-volt source into alternating current (AC) electricity at 120 volts.

[Get Price](#)



[12V to 120V Inverter: How It Works & What You Need to Know](#)

Learn how a 12V to 120V inverter works and why it matters to off-grid solar systems, RVs, and backup power. Get all the key details and pick the right one!

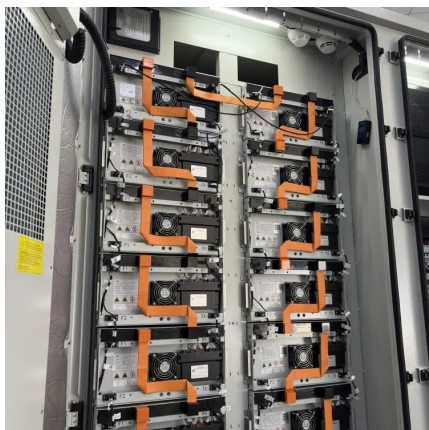
[Get Price](#)



12 Volt DCAC Power Inverters

12-volt DC to 120-volt AC power inverters are the most common type of direct-current to alternating-current (DC to AC) power supply. Because most vehicles, trucks, RVs, and boats ...

[Get Price](#)



Inverters Guide

Inverters Guide Power inverters, or simply 'inverters', are transformers that will convert a DC current into an AC current, allowing you to run higher voltage equipment from a battery or other DC power source. ...

[Get Price](#)



2000 WATT PURE SINE INVERTER WITH

...

2000 WATT PURE SINE INVERTER WITH
TRANSFER SWITCH 12 VDC TO 120 VAC ETL
LISTED , 2000 watt continuous power - 4000 watt
surge - Over voltage shutdown

[Get Price](#)



Top 12 Volt Inverters for Reliable Power Conversion in Your ...

Choosing the right 12 volt inverter is essential for
converting your vehicle's DC power into AC
power efficiently. These inverters provide
convenient electricity for laptops, ...

[Get Price](#)

Contact Us

For catalog requests, pricing, or partnerships, please visit:
<https://germansolar.co.za>

Scan QR Code for More Information



<https://germansolar.co.za>