

# 1kWh lithium iron phosphate solar container outdoor power





## 1kWh lithium iron phosphate solar container outdoor power



**1 kwh is equal to how many units**

Answer: 1 unit Explanation: One kilowatt-hour (kWh) is equal to one unit of electricity. So, 1 kWh = 1 unit. In most countries, electricity consumption is measured and ...

[Get Price](#)

[1 kWh is equal to 3.6 times 10<sup>6</sup> MJ 3.6 times 10<sup>5</sup> MJ 3.6 ...](#)

In the video, they said that 1kwh is equal to  $3.6 \times 10^9$  J But, in the question and answer, they said that 1 kwh =  $3.6 \times 10^6$  J. So, Please tell me which is correct?

[Get Price](#)



[Define 1 KWh. Give the relation between 1 kWh and Joule.](#)

Click here: [point\\_up\\_2](#):to get an answer to your question :[writing\\_hand](#):define 1 kwh give the relation between 1 kwh and joule

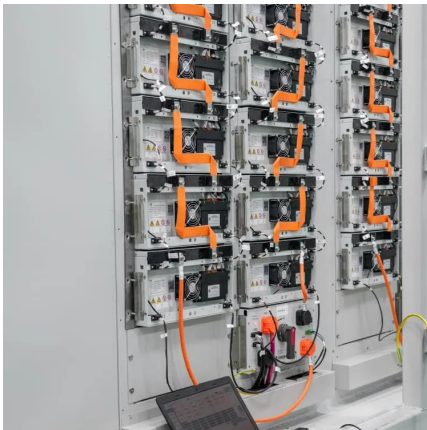
[Get Price](#)



[a washing machine connected to a 220v generator draws a](#)

a washing machine connected to a 220v generator draws a current of 10 A . Then what is the power of the washing machine? If it is used for 6 hours in a day - 61789720

[Get Price](#)



[Derive the relation between kilowatt hour and joule .](#)

Answer:  $1\text{kWh} = 3.6 \times 10^6 \text{ J}$  Explanation: We know,  $1 \text{ KW} = 1000 \text{ W}$   $1 \text{ hr} = 60 \times 60$  seconds Therefore,  $1 \text{ kWh} = 1000 \text{ Watt} \times (60 \times 60) \text{ seconds}$   $1 \text{ kWh} = 10^3 \text{ W} \times 3600 \text{ s}$   $1 \text{ kWh} = \dots$

[Get Price](#)

## Contact Us

---

For catalog requests, pricing, or partnerships, please visit:  
<https://germansolar.co.za>

**Scan QR Code for More Information**



<https://germansolar.co.za>