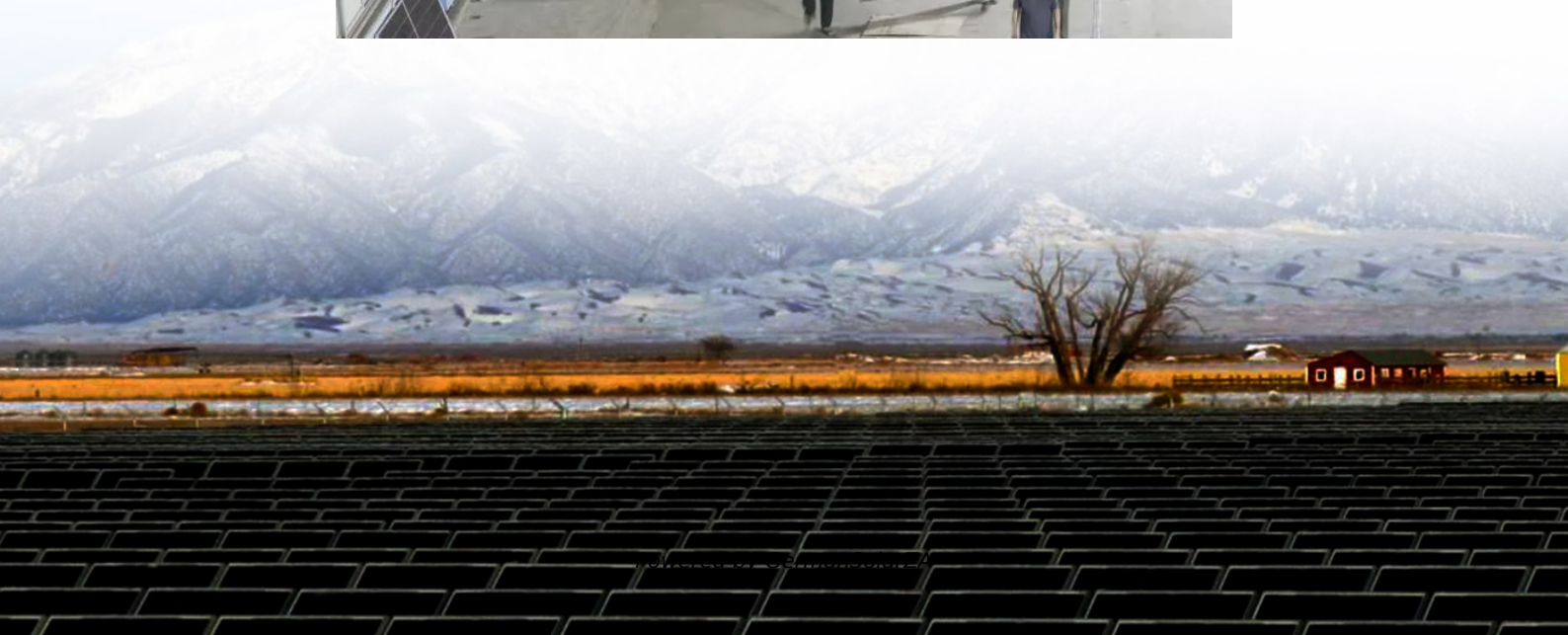


5g base station power settings





Overview

Can 3GPP reduce base station energy consumption in 5G NR BS?

Aiming at minimizing the base station (BS) energy consumption under low and medium load scenarios, the 3GPP recently completed a Release 18 study on energy saving techniques for 5G NR BSs . A broad range of techniques was evaluated in terms of the obtained network energy saving (NES) gain and their impact to the user-perceived throughput (UPT).

What is a 5G Brain Center?

Often referred to as the brain center, this includes: Baseband Unit (BBU): Handles baseband signal processing. Remote Radio Unit (RRU): Converts signals to radio frequencies for transmission. Active Antenna Unit (AAU): Integrates RRU and antenna for 5G-era efficiency. 2. Power Supply System.

Is a 5G energy saving solution enough?

It also analyses how enhanced technologies like deep sleep, symbol aggregation shutdown etc., have been developing in the 5G era. This report aims to detail these fundamentals. However, it is far away from being enough, a revolutionized energy saving solution should be taken into consideration.

Does 5G increase energy consumption?

5G is the most advanced cellular technology in commercial deployment of our era. While 5G offers much faster speed, massive connections and much lower latency, and would enable a much bigger variety of new applications for both people's lives and vertical industries, it does increase the energy consumption of the cellular networks.



5g base station power settings



Optimal energy-saving operation strategy of 5G base station ...

To further explore the energy-saving potential of 5 G base stations, this paper proposes an energy-saving operation model for 5 G base stations that incorporates ...

[Get Price](#)

[Building better power supplies for 5G base stations](#)

Building better power supplies for 5G base stations Authored by: Alessandro Pevere, and Francesco Di Domenico, both at Infineon Technologies

[Get Price](#)



[What is the Power Consumption of a 5G Base Station?](#)

As 5G becomes the new normal, questions of 5G base station power consumption become more relevant than ever, not only for operators eager to manage their costs but also ...

[Get Price](#)

[Final draft of deliverable D.WG3-02-Smart Energy Saving ...](#)

Technical Report ITU-T Smart Energy Saving of 5G Base Station: Based on AI and other emerging technologies to forecast and optimize the management of 5G wireless network ...

[Get Price](#)



[Why does 5g base station consume so much ...](#)

The power consumption of the 5G base station mainly comes from the AU module processing and conversion and high power-consuming high radio frequency signals, the extremely high-algorithm and high ...

[Get Price](#)



[Why does 5g base station consume so much power and how ...](#)

The power consumption of the 5G base station mainly comes from the AU module processing and conversion and high power-consuming high radio frequency signals, the ...

[Get Price](#)



[An Introduction to 5G and How MPS Products Can...](#)

The infrastructure for 5G requires a dense network of cells and base stations, which can be expensive and require a long development time due to coordination between ...

[Get Price](#)



[Complete Guide to 5G Base Station...](#)



Explore how 5G base stations are built--from site planning and cabinet installation to power systems and cooling solutions. Learn the essential components, technologies, and challenges behind 5G ...

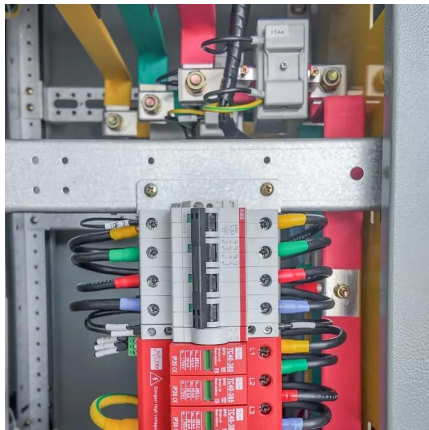
[Get Price](#)



A Power Consumption Model and Energy Saving Techniques for 5G ...

Aiming at minimizing the base station (BS) energy consumption under low and medium load scenarios, the 3GPP recently completed a Release 18 study on energy saving ...

[Get Price](#)



Complete Guide to 5G Base Station Construction , Key Steps, ...

Explore how 5G base stations are built--from site planning and cabinet installation to power systems and cooling solutions. Learn the essential components, technologies, and ...

[Get Price](#)



[Energy Management of Base Station in 5G and B5G: Revisited](#)

Since mmWave base stations (gNodeB) are typically capable of radiating up to 200-400 meters in urban locality. Therefore, high density of these stations is required for ...

[Get Price](#)



[5G Base Station Power Upgrade: Custom Rectifier Module ...](#)



Upgrade 5G base station power in outdoor, indoor, and shared cabinets with custom rectifier module solutions for efficient, scalable, and reliable performance.

[Get Price](#)



Contact Us

For catalog requests, pricing, or partnerships, please visit:
<https://germansolar.co.za>

Scan QR Code for More Information



<https://germansolar.co.za>