

American Communications 800m Base Station





Overview

What is included in the AC 800m controller family?

The AC 800M controller family includes a selection of communications modules that make it possible to access a wide range of field devices and third-party systems. The interfaces include:.

What is AC 800m SNTP?

SNTP is a standardized protocol that typically is used by AC 800M controllers that need to be synchronized from an external time server (for example a GPS receiver) which is connected to the Control Network.

Can ci865 be used with AC 800m controller?

The CI865 module makes it possible to use older Satt I/O system (Rack I/O and Series 200 I/O) with the AC 800M controller platform, but it cannot be used as a general ControlNet interface. CI865 cannot be used in a High Integrity controller.

What is a ci869 AC 800m controller?

An AC 800M controller with the communication interface CI869 behaves as an AF 100 station, receiving data from other AF 100 stations/devices. The CI869 has integrated twisted pair modems. CI869 can also be used in an AC 800M High Integrity system.



American Communications 800m Base Station



[Compact Control Builder AC 800M. Product Guide](#)

This book is about Compact Control Builder AC 800M and OPC Server for AC 800M. The Product Guide starts presenting information through a certain structure that begins ...

[Get Price](#)

CI865

The CI865 module is the AC 800M system's communication interface for Satt ControlNet and bridges different bus standards used on AC 800M and Satt ControlNet. The CI865 module ...

[Get Price](#)

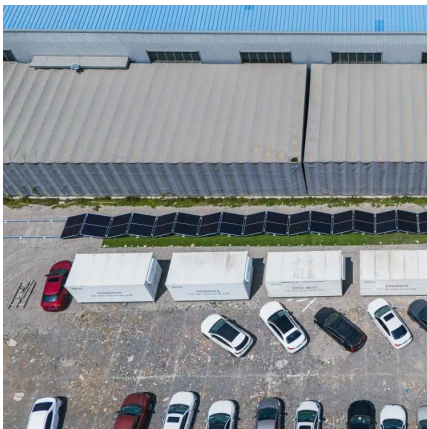


ABB CI869 COMMUNICATIONS

The CI869 communication interface attached to the AC 800M controller provides connectivity to other AC 800M, AC 160 or a connectivity server over AF 100. An AC 800M controller with the ...

[Get Price](#)

CI869

An AC 800M controller with the communication interface CI869 behaves as an AF 100 station, receiving data from other AF 100 stations/devices. The CI869 has integrated twisted pair ...



[Get Price](#)



CI865

The CI865 module is the AC 800M system's communication interface for Satt ControlNet and bridges different bus standards used on AC 800M and Satt ControlNet. The CI865 module makes it possible to use older Satt I/O ...

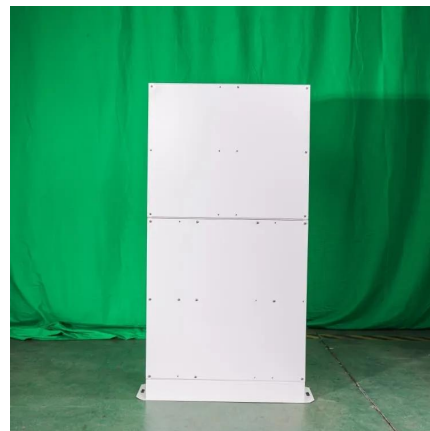
[Get Price](#)



[Communications > AC 800M Communication ...](#)

The AC 800M controller family includes a selection of communications modules that make it possible to access a wide range of field devices and third-party systems.

[Get Price](#)



RTS Two-Channel UHF Synthesized Wireless Intercom Base Station ...

The BTR-800 system includes the BTR-800 frequency-agile base station, working with up to four (4) TR-800 or TR-825 frequency-agile beltpacks. The BTR-800 base station provides full ...

[Get Price](#)



[CDMA 800m Base Station Coupling Fiber](#)

...

CDMA 800m Base Station Coupling Fiber Optic Amplifier 824-849/869-894MHz 5W Mobile Phone Signal Booster Repeater, Find Details and Price about Booster Signal 2g 3G 4G GSM Signal Repeater from ...

[Get Price](#)



CDMA 800m Base Station Coupling Fiber Optic Amplifier 824 ...

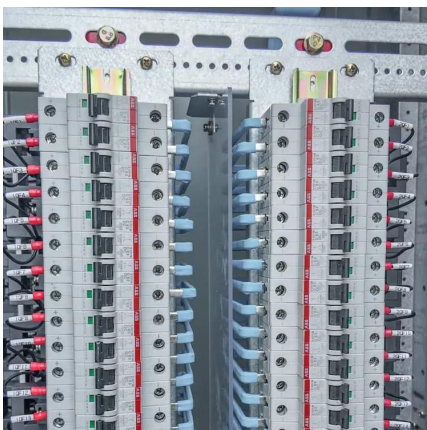
CDMA 800m Base Station Coupling Fiber Optic Amplifier 824-849/869-894MHz 5W Mobile Phone Signal Booster Repeater, Find Details and Price about Booster Signal 2g 3G 4G ...

[Get Price](#)

[AC 800M Controller and Communication interfaces](#)

Outline of all modules AC 800M is a family of rail-mounted modules, consisting of CPUs, communication modules, power supply modules and various accessories. There are ...

[Get Price](#)



[BK KNG-B800 800 MHz Digital Base Station 35 Watts](#)

RELM/BK KNG-B800 Digital UHF Base Station, 763-870 MHz, 35W, 2048 Channels, Integrated GPS. With a touch screen display. Unit comes with Internal Speaker and Power Supply. Low ...

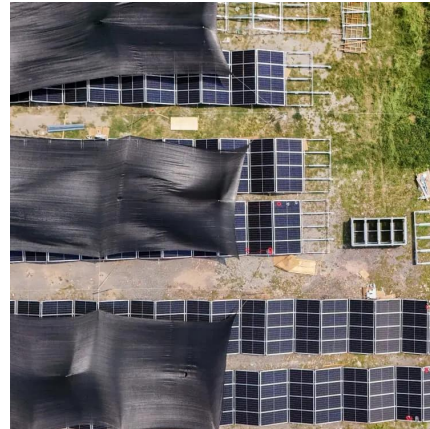
[Get Price](#)



Communications > AC 800M Communication interfaces

The AC 800M controller family includes a selection of communications modules that make it possible to access a wide range of field devices and third-party systems.

[Get Price](#)



BK KNG-B800 800 MHz Digital Base Station 35 Watts

RELM/BK KNG-B800 Digital UHF Base Station, 763-870 MHz, 35W, 2048 Channels, Integrated GPS. With a touch screen display. Unit comes with Internal Speaker and ...

[Get Price](#)

Communications

The AC 800M controller family includes a selection of communications modules that make it possible to access a wide range of field devices and third-party systems. The interfaces ...

[Get Price](#)



Contact Us

For catalog requests, pricing, or partnerships, please visit:
<https://germansolar.co.za>



Scan QR Code for More Information



<https://germansolar.co.za>