

Base station communication equipment identification





Overview

What does a base station do?

The base station acts as a bridge gateway between the user equipment and the core network. The core network provides service connectivity to the user equipment by authentication management, identity management, and mobility management.

What are the components of a base station?

The base station will have one or more RF antennas installed to transmit and receive RF signals from other devices. The block diagram of a base station typically includes the following key components: Baseband Processor: The baseband processor too deals with different communication protocols and interfaces with mobile network infrastructure.

What is a mobile base station?

A mobile base station, also called a base transceiver station (BTS), is a fixed radio transceiver in any mobile communication network or wide area network (WAN). The base station connects mobile devices to the network and routes them to other terminals in the network or to the core network of a mobile operator. [Read more Explore Mobile base.](#)

What is a pseudo base station?

Abstract: Pseudo base station (BS) is an illegal radio device that exploits the security vulnerabilities of fifth generation (5G) communications and then implements corresponding network attacks, such as spoofing attack. These malicious actions cause security and privacy threats and hinder the wide deployment of wireless access networks.



Base station communication equipment identification



Base Stations

The present-day tele-space is incomplete without the base stations as these constitute an important part of the modern-day scheme of wireless communications. They are ...

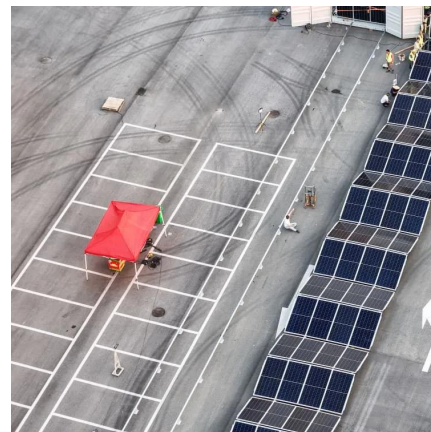
[Get Price](#)



[Base Station Identification: A Deep Dive](#)

Base station identification is a fundamental aspect of cellular network operation. The unique identifiers assigned to base stations are essential for network management, mobility ...

[Get Price](#)



[Identification method of pseudo base station and mobile ...](#)

The invention provides an identification method of a pseudo base station, and a mobile terminal. The method comprises the following steps: receiving a broadcast message sent by a base ...

[Get Price](#)

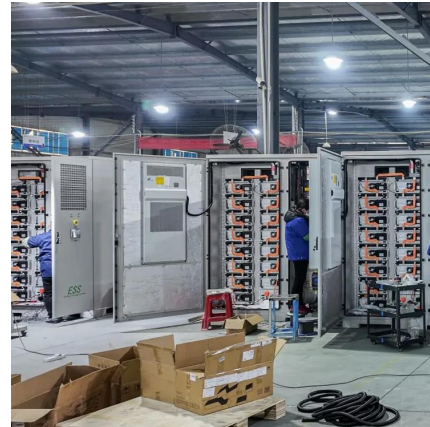
[Explain the concept of Base Station Identity ...](#)

The Base Station Identity Code (BSIC) is a parameter used in GSM (Global System for Mobile Communications) networks to uniquely identify individual cells within a network. It is a



part of the information ...

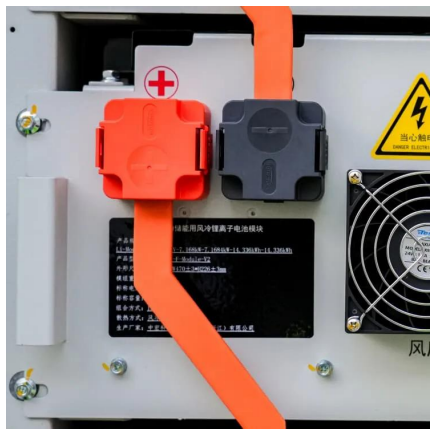
[Get Price](#)



Base Stations

The present-day tele-space is incomplete without the base stations as these constitute an important part of the modern-day scheme of wireless communications. They are referred to as cell towers or cellular ...

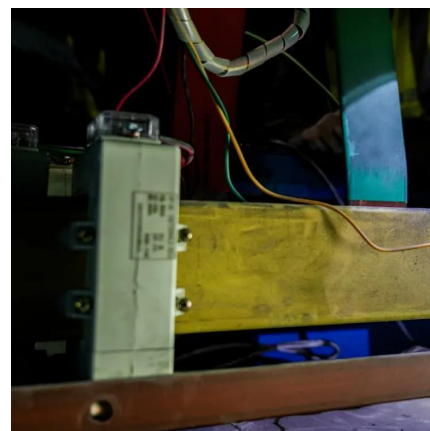
[Get Price](#)



Mobile base station , Application

Compatibility for integrating base transceiver stations between different vendors' equipment. Scalability in ensuring that the base station can scale to support multiple and new protocols to ...

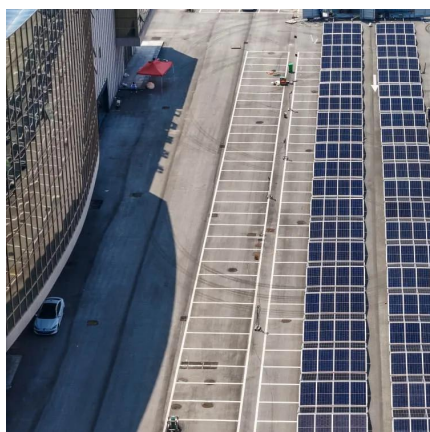
[Get Price](#)



4 Identification of location areas and base stations - TechSpec

4 Identification of location areas and base stations
5 Identification of MSCs, GSNs, location registers and CSSs
6 International Mobile Station Equipment Identity, Software Version ...

[Get Price](#)





Location-Invariant Radio Frequency Fingerprint for Base Station

Pseudo base station (BS) is an illegal radio device that exploits the security vulnerabilities of fifth generation (5G) communications and then implements corresponding ...

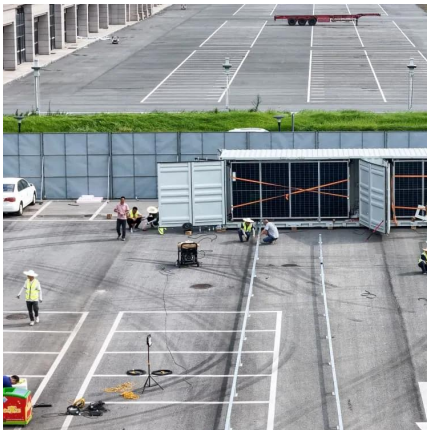
[Get Price](#)



[\[2504.02133\] Base Station Certificate and Multi-Factor ...](#)

We design and build a base station certificate (certifying the base station's public key and location) and a multi-factor authentication (making use of the certificate and the ...

[Get Price](#)



Mobile base station , Application

Compatibility for integrating base transceiver stations between different vendors' equipment. Scalability in ensuring that the base station can scale to support multiple and new protocols to meet the growing demand for ...

[Get Price](#)



[Explain the concept of Base Station Identity Code \(BSIC\).](#)

The Base Station Identity Code (BSIC) is a parameter used in GSM (Global System for Mobile Communications) networks to uniquely identify individual cells within a ...

[Get Price](#)





[Fake Base Station Detection and Link Routing Defense](#)

User equipment connects to the remote Internet and services through multiple nodes, the first of which is a base station. To support its mobility, user equipment connects to ...

[Get Price](#)



[Identifying the Fake Base Station: A Location Based Approach](#)

Fake base station (FBS) attack is a great security challenge to wireless user equipment (UE). During the cell selection stage, the UE receives multiple synchronization signals (SSs) from ...

[Get Price](#)



[Fake Base Station Detection and Link Routing Defense](#)

User equipment connects to the remote Internet and services through multiple nodes, the first of which is a base station. To support its mobility, user equipment connects to ...

[Get Price](#)



Contact Us

For catalog requests, pricing, or partnerships, please visit:
<https://germansolar.co.za>



Scan QR Code for More Information



<https://germansolar.co.za>