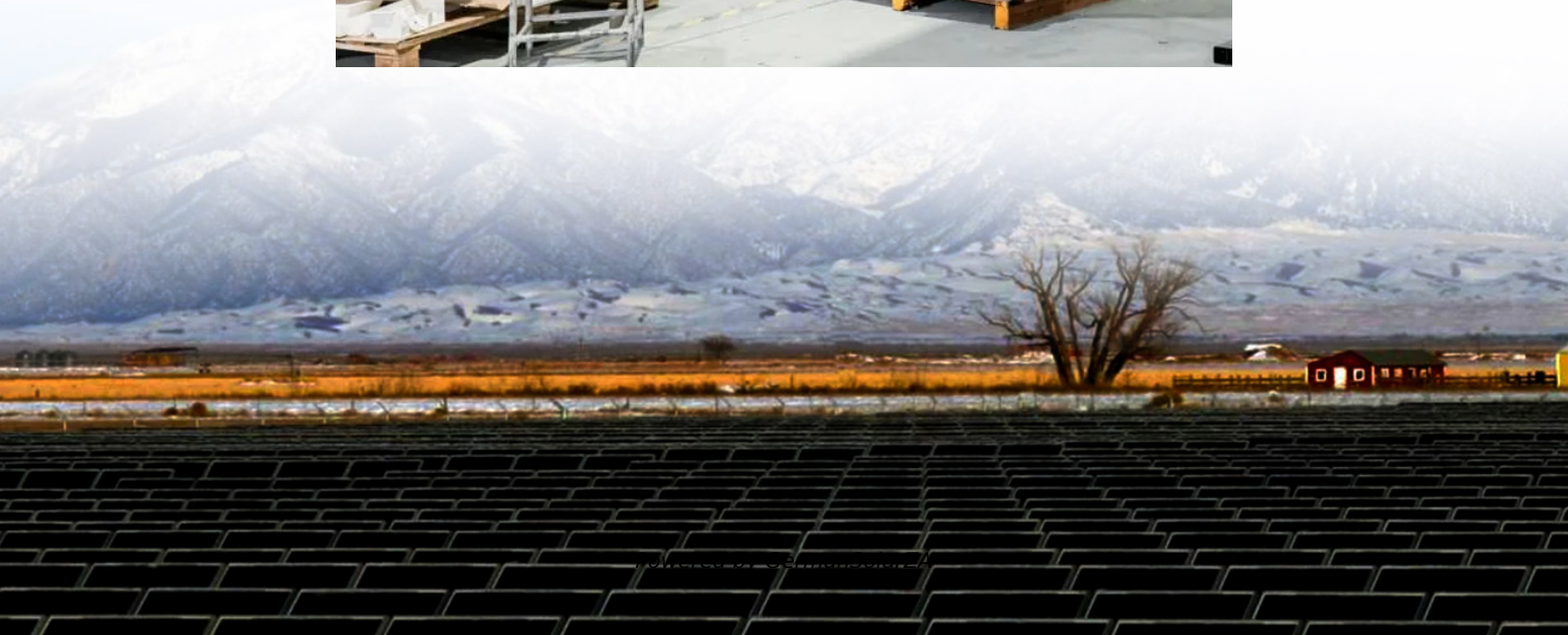


Battery Cabinet Installation Steps





Overview

How do you reinstall a battery cabinet?

Reinstall the left side panel on the left-most battery cabinet after interconnection. Push the third battery cabinet into position, align with the seismic anchoring (if any), level the battery cabinet, and interconnect with the other battery cabinets as described in step 2, step 3, and step 5.

How do you level a battery cabinet?

Remove the side panels that are adjacent to the other battery cabinets. Push the right-most battery cabinet into position. For seismic anchoring, ensure that the rear seismic bracket connects to the rear anchors. Lower the levelling feet until they connect with the floor - use a bubble-leveler to ensure that the cabinet is level.

How do I install a battery cable?

Install the positive cable (red) to the positive (+) battery terminal, and secure them with T-bolt and nut (Figure 5). Note: Ensure that the positive (+) terminal is all the way onto the post and the cable is positioned snug to the battery. Important: The cable must not contact the battery cover.

How to protect a lithium battery energy storage cabinet?

At the same time, setting the charging and discharging parameters, configuring the safety and protection settings, and protecting the lithium battery energy storage cabinet from potential dangers such as overcurrent, overvoltage, and overtemperature are necessary.



Battery Cabinet Installation Steps



Never Struggle Installing ESTEL Outdoor Battery Cabinets ...

Install your outdoor battery storage cabinet with ease. Follow our step-by-step guide for safe setup, proper wiring, and long-term stability outdoors.

[Get Price](#)



[How to Install and Set Up a Battery Storage Cabinet at Home](#)

Discover the components and benefits of battery storage cabinet systems, including lithium-ion advantages, placement considerations, ventilation needs, and cost ...

[Get Price](#)

[Position and Interconnect the Battery Cabinets](#)

Install the ten interconnection screws (five in the front and five in the rear) between the two battery cabinets. NOTE: To reach the five interconnection screws in the rear of the left-most battery ...

[Get Price](#)



[How to correctly install lithium battery energy ...](#)

Lithium battery energy storage cabinets can meet the needs of different large-scale projects and are very suitable for grid auxiliary services and industrial and commercial applications. In this guide, we will ...

[Get Price](#)



[Installation Guide: Storemasta Lithium-Ion Battery Cabinet](#)

Installation Guide: Storemasta Lithium-Ion Battery Cabinet This step-by-step guide outlines how to install and maintain a Storemasta battery charging and storage cabinet for ...

[Get Price](#)



[Step-by-Step Solar Battery Cabinet Installation Guide](#)

Follow this detailed guide for a smooth installation of your solar battery cabinet and maximize renewable energy use

[Get Price](#)



Energy Storage Cabinet Installation: A Step-by-Step Guide ...

Who Needs This Guide and Why It Matters If you're reading this, chances are you're either a solar enthusiast tired of watching precious energy go to waste, a facility manager looking to cut ...

[Get Price](#)



[EXTERNAL BATTERY CABINET KEOR COMPACT...](#)



The proper ventilation is guaranteed with natural air circulation thanks to the ventilation holes, present on the cabinet sides and on the rear panels. This publication, simply ...

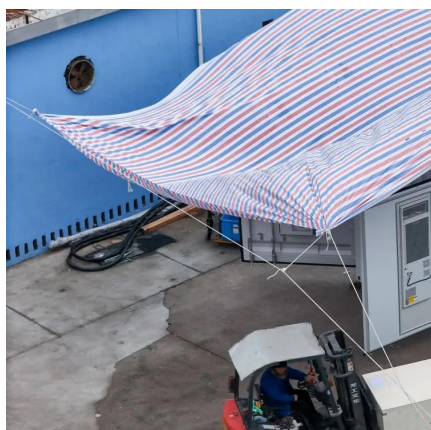
[Get Price](#)



How to correctly install lithium battery energy storage cabinet?

Lithium battery energy storage cabinets can meet the needs of different large-scale projects and are very suitable for grid auxiliary services and industrial and commercial ...

[Get Price](#)



The Ultimate Guide to Energy Storage Cabinet Installation Steps ...

With the global energy storage market projected to hit \$546 billion by 2035 according to BloombergNEF, getting installation right isn't just smart - it's crucial for safety and system ...

[Get Price](#)



[BC58 Battery Cabinet Installation, Operation.](#)

6.2.1 EQUIPMENT LOCATION Prior to installation, verify floor loading requirements and all applicable codes pertaining to the related equipment. Environmental conditions should also be ...

[Get Price](#)





Contact Us

For catalog requests, pricing, or partnerships, please visit:
<https://germansolar.co.za>

Scan QR Code for More Information



<https://germansolar.co.za>