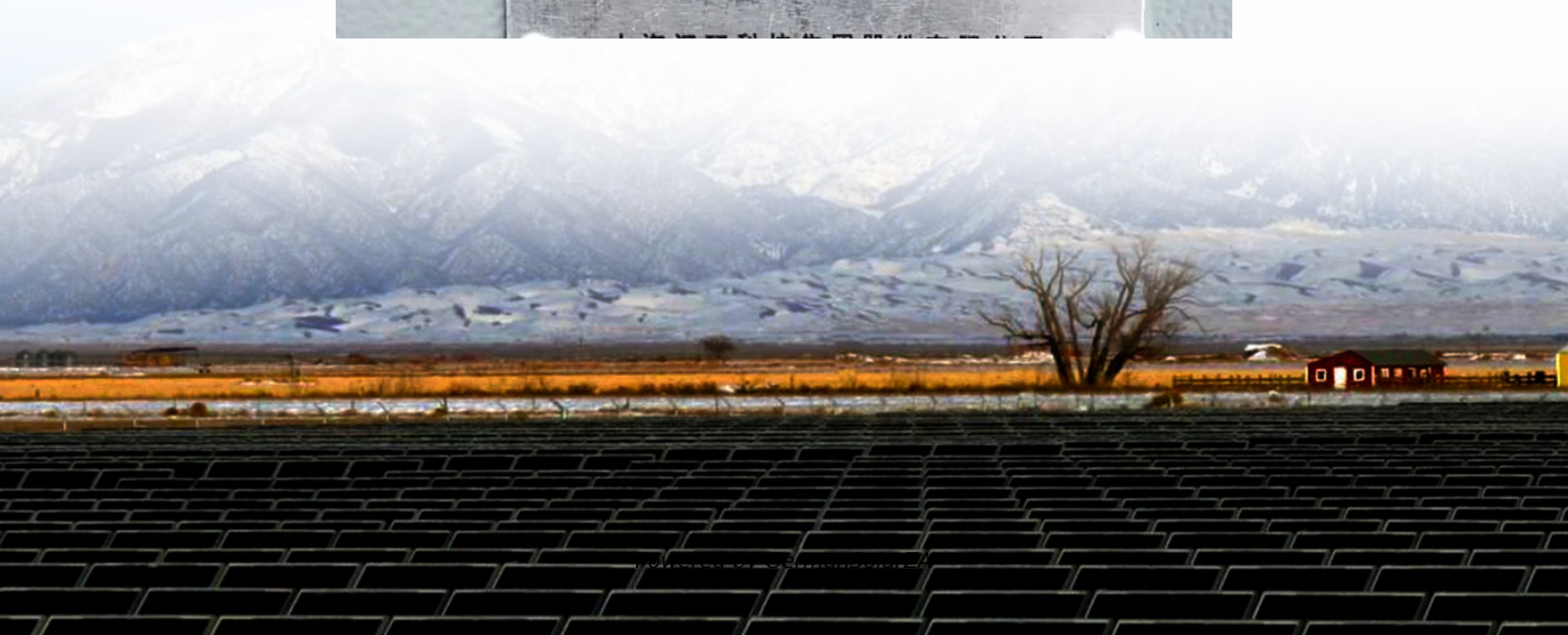


Can the inverter use 24v





Can the inverter use 24v



[Can I Run a 12V Inverter on a 24V Battery?](#)

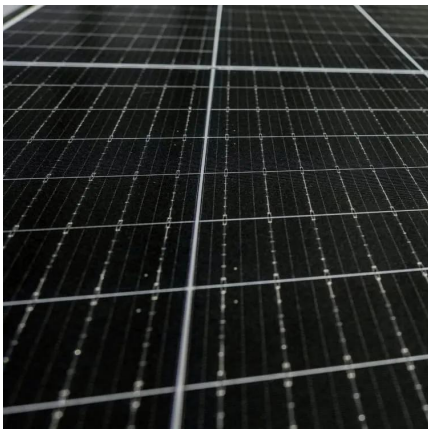
You cannot connect a 12V inverter directly to a 24V battery because 12V inverters are only designed for 12V input, and 24V exceeds their operating range.

[Get Price](#)

[12V Inverter vs 24V Inverter -- What Is The Difference](#)

This article will explore the differences between 12v inverter vs 24v inverter, considering factors such as energy loss, battery requirements, and suitability for different ...

[Get Price](#)



Can I Run A 12V Inverter On A 24V Battery? Solutions And ...

To use a 12V inverter with a 24V battery, a DC-DC buck converter can be employed. This device reduces the 24V input down to 12V for the inverter, ensuring safe and ...

[Get Price](#)

How Long Will A 24V Battery Last With an Inverter - Let's ...

Learn how long a 24V battery lasts with an inverter. Step-by-step calculation, examples, 12V vs 24V comparison, FAQs, and tips to maximize runtime.



[Get Price](#)



[12V vs 24V Inverter: What's The Difference & Which is Better](#)

Torn between 12V and 24V inverters? Discover the key differences in efficiency, cost, and power capacity to determine which is better for your energy needs.

[Get Price](#)



12V vs 24V Inverter: What's the difference between 12 and ...

Knowing the voltage of your inverter critical in order for everything to run correctly. Using the wrong voltage inverter can even lead to irreparable damage to your equipment. That's why ...

[Get Price](#)



[will a 12v inverter run off 24v batteries](#)

A significant concern when using a 12V inverter with 24V batteries is the issue of voltage match. A 12V inverter is specifically designed to work with 12V batteries, while 24V batteries have a ...

[Get Price](#)

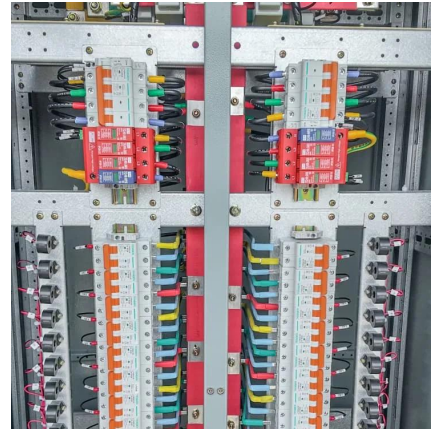


[Can I Use 24V Inverter with 12V Battery](#)



Wondering if a 24V inverter can be used with a 12V battery? Learn the truth and explore key considerations before making your decision.

[Get Price](#)



How to Set Up a Reliable 24V Solar Inverter System: A Step ...

Learn how to set up a reliable 24V solar inverter system. Connect 12-volt lithium batteries and solar panels with our step-by-step guide.

[Get Price](#)



Can You Use a 24 volt inverte With a 12V Battery System?

Conclusion Pairing a 24 volt inverter directly with a lone 12 V battery is a no-go--it starves the inverter and can wreck both battery and electronics. The safe routes are simple: ...

[Get Price](#)



Contact Us

For catalog requests, pricing, or partnerships, please visit:
<https://germansolar.co.za>



Scan QR Code for More Information



<https://germansolar.co.za>