

Classification of outdoor wireless base station usage





Overview

What is the TP-Link outdoor wireless base station?

The TP-LINK Outdoor Wireless Base Station pairs professional performance with user-friendly design, making it the perfect solution for both business and home users. Two external RP-SMA antenna interfaces allow the Outdoor Wireless Base Station to integrate seamlessly with TP-LINK's line of sector and dish antennas.

Can the wbs510 be paired with a TP-Link dish antenna?

Where long- distance wireless data transmission is necessary, the WBS510 can be paired with a TP-LINK dish antenna, allowing it to transfer data over distances of up to 50 km *. Pharos Base Stations works seamlessly with TP-LINK dish and sector antennas to provide efficient PtP and PtMP data transmission.

Why are base stations important?

As critical nodes in wireless network connectivity, base stations, if not deployed with foresight and scientific planning, may not only lead to resource wastage, but also cause signal interference, directly affecting network coverage, signal quality, and user experience, thereby increasing the complexity of network management and operational costs.

What is the minimum distance between a base station?

To prevent interference, the minimum distance between any two stations is set at 250 meters. Each base station has a coverage radius of 170 meters. Most areas are covered. However, areas with very dense buildings and areas beyond the coverage are not covered.



Classification of outdoor wireless base station usage



5G NR Base Station Classes: Type 1-C, Type 1-H, Type 1-O, ...

This article describes the different classes or types of 5G NR Base Stations (BS), including BS Type 1-C, BS Type 1-H, BS Type 1-O, and BS Type 2-O. Introduction to 5G NR and Base ...

[Get Price](#)



[5GHz 300Mbps Outdoor Wireless Base Station](#)

Long-Distance Wireless Data Transmission Two external RP-SMA antenna interfaces allow the Outdoor Wireless Base Station to integrate seamlessly with TP-LINK's line ...

[Get Price](#)



[Types of base station according to propagation environment](#)

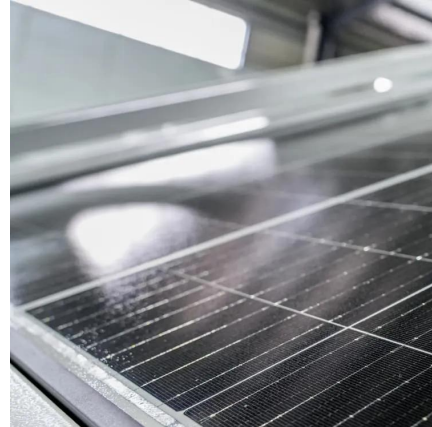
Figure 2 shows the types of the base station used in indoor and outdoor and according to the propagation environment. Each type will be described in the following section.

[Get Price](#)

[Optimization of 5G base station deployment based on ...](#)

In previous research on 5 G wireless networks, the optimization of base station deployment primarily relied on human expertise, simulation software, and algorithmic ...

[Get Price](#)



Data Driven Environment Classification Using Wireless Signals

Abstract. Robust classification of the operational environment of wireless devices is becoming increasingly important for wireless network optimization, particularly in a shared ...

[Get Price](#)



Intelligent Siting Framework for Wireless Network Base ...

The authors of this paper extract user indoor-outdoor features based on MR call detail records, including cell level, handover, and mobility behaviors, using an XGB-based ...

[Get Price](#)



Types of base station according to ...

Figure 2 shows the types of the base station used in indoor and outdoor and according to the propagation environment. Each type will be described in the following section.

[Get Price](#)



5G NR Base Station Classes: Type 1-C, Type 1...



This article describes the different classes or types of 5G NR Base Stations (BS), including BS Type 1-C, BS Type 1-H, BS Type 1-O, and BS Type 2-O. Introduction to 5G NR and Base Stations 5G NR (New Radio) is the latest ...

[Get Price](#)



[5GHz 300Mbps Outdoor Wireless Base ...](#)

Long-Distance Wireless Data Transmission Two external RP-SMA antenna interfaces allow the Outdoor Wireless Base Station to integrate seamlessly with TP-LINK's line of sector and dish antennas. Where long- ...

[Get Price](#)



[Wireless Communication Base Station Location Selection ...](#)

1. Introduction Recently, with the rapid development of wireless communication technology, the enhancement of wireless network performance is concerned with meeting the ...

[Get Price](#)



Optimizing the ultra-dense 5G base stations in urban outdoor ...

Due to the high propagation loss and blockage-sensitive characteristics of millimeter waves (mmWaves), constructing fifth-generation (5G) cellular networks involves deploying ...

[Get Price](#)



[The classification of outdoor base station antennas](#)



Multi-mode base station antennas differ from regular base station antennas in that they integrate two or more antennas for different frequency bands within limited space. ...

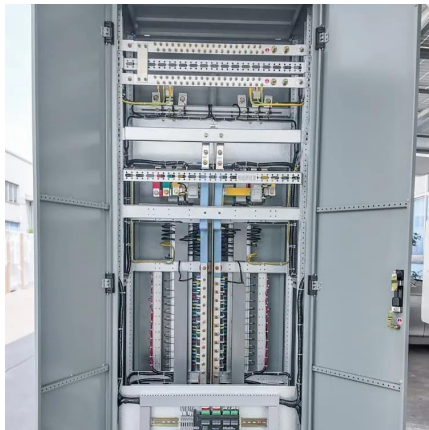
[Get Price](#)



[Wireless Survey And Design Of Outdoor Base Stations](#)

The design and layout of the base station is the primary work of network planning, including the content is to determine the frequency multiplexing mode according to the width of the ...

[Get Price](#)



Contact Us

For catalog requests, pricing, or partnerships, please visit:
<https://germansolar.co.za>

Scan QR Code for More Information



<https://germansolar.co.za>