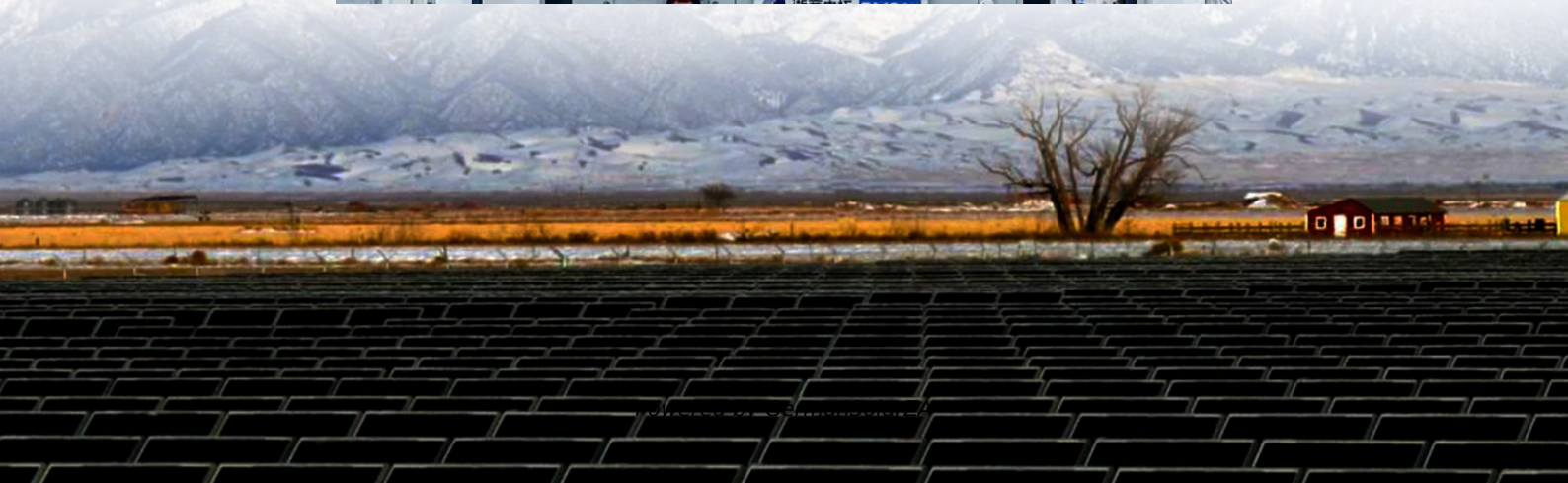
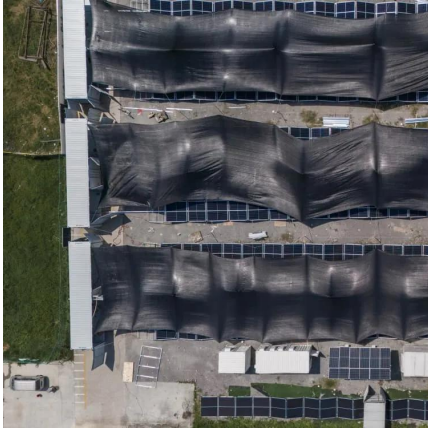


Coal mine rescue solar container communication station inverter grid connection





Coal mine rescue solar container communication station inverter gr



Australian energy facts

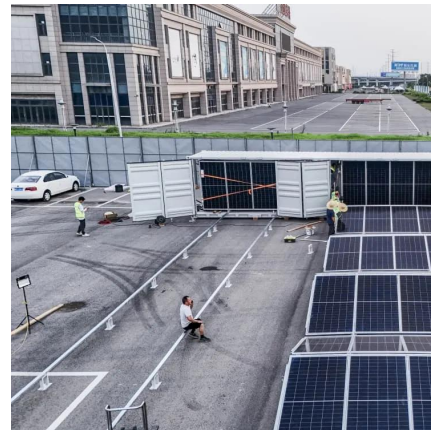
Australian energy factsNon-renewable energy resources Australia's energy needs are still mostly met by fossil fuels. Australia's coal resources are used to generate three ...

[Get Price](#)

Coal Geology

Coal is a combustible sedimentary rock formed from ancient vegetation which has been consolidated between other rock strata and transformed by the combined effects of ...

[Get Price](#)



Coal

Coal properties vary depending on how much carbon is in the coal (coal rank). Black coal is so called because of its colour; it varies from having a bright, shiny lustre to being ...

[Get Price](#)



Australian Resource Assessment

Coal accounts for around three quarters of Australia's electricity generation, with coal-fired power stations located in every mainland state. Australia is well-placed to take ...



[Get Price](#)



[2025 Preliminary Tables , Geoscience Australia](#)

Australia's Identified Mineral Resources (AIMR) 2025 presents an annual assessment of Australia's mineral reserves and resources for 36 commodities. Preliminary ...

[Get Price](#)



Gas

In-situ coal gasification refers to gas being extracted from coal seams by in-situ heating to produce synthesis (syn) gas. Unconventional contingent gas reserves for Australia, ...

[Get Price](#)



[Coal , Australia's Energy Commodity Resources 2023](#)

Coal ranking, that is peat, lignite, sub-bituminous, bituminous and anthracite, are expressed on the degree of plant matter alteration. The latter three ranks are commonly referred to as "black ...

[Get Price](#)

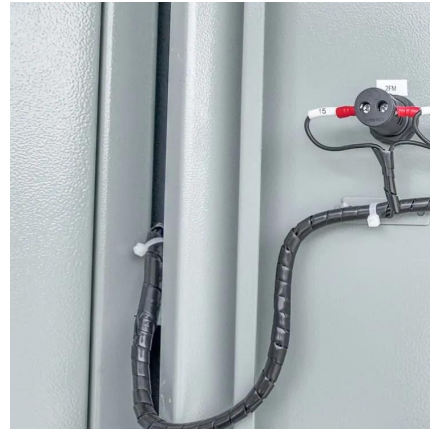
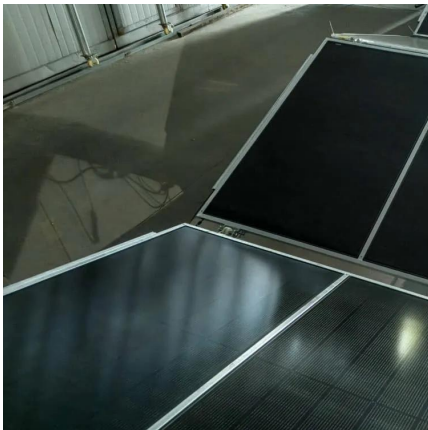




Coal Resources

Coal is a fossil fuel of sedimentary origin that has formed by coalification of vegetation over millions of years. Black coal consists of the higher rank anthracite, bituminous ...

[Get Price](#)



Black Coal

The majority of the black coal mined in Australia belongs to the bituminous category, and is produced either in Queensland or New South Wales. Australian black coal is ...

[Get Price](#)

Contact Us

For catalog requests, pricing, or partnerships, please visit:
<https://germansolar.co.za>

Scan QR Code for More Information



<https://germansolar.co.za>