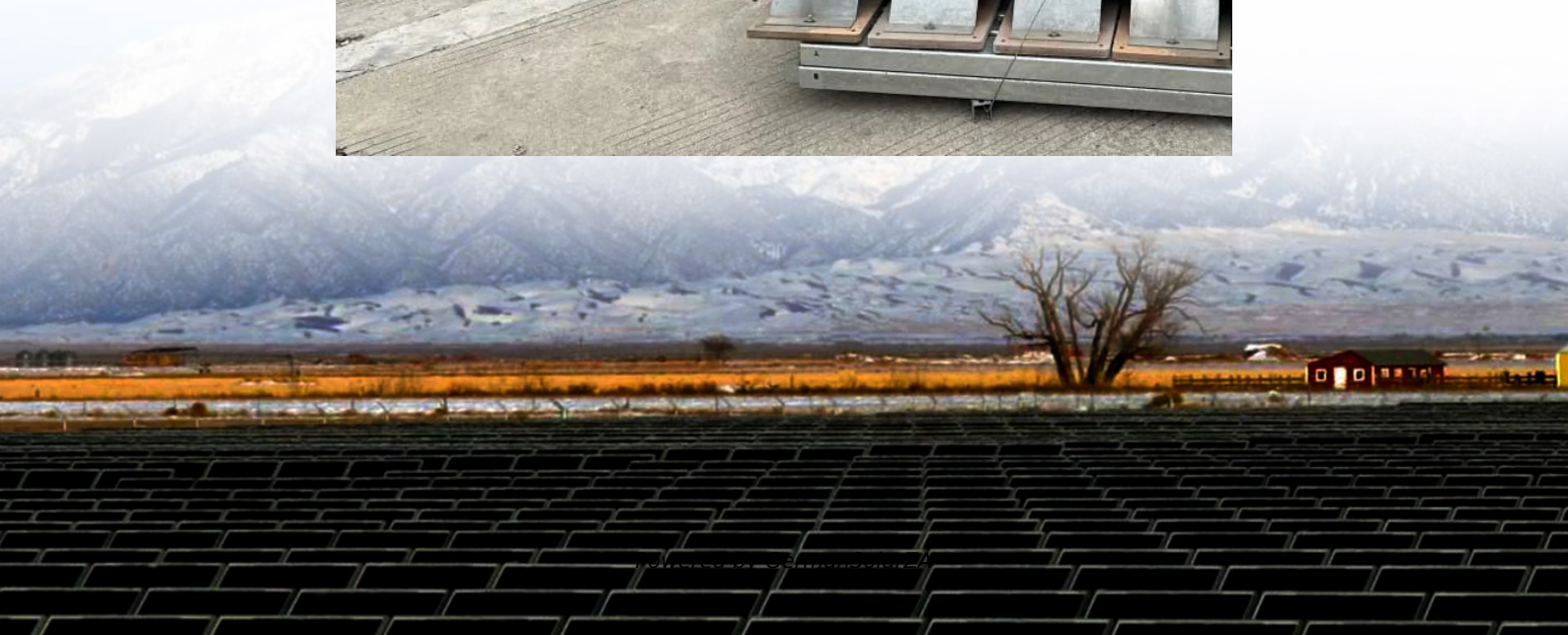


Comparative Test of 200kWh Foldable Container Lighting for Urban Lighting





Overview

Urban lighting system is an important part of urban space service functions. With the continuous advancement of sustainable development goals, governments of various countries are gradually paying attention to it.

What factors affect urban lighting supply and demand in Hangzhou?

Four factors, namely land-use type, road grade, parcel volume, and nighttime crowds, were evaluated. Based on the spatiotemporal geographic data and the urban lighting planning of Hangzhou, a calculation method for the supply and demand of urban lighting at night in Hangzhou was constructed.

Who are the authors of demand planning research on nighttime urban lighting?

Author to whom correspondence should be addressed. Lingyan Zhang, Shan Huang, Yunchen Zhu are co-first authors. Demand planning-oriented research on nighttime urban lighting provides a foundation for formulating strategies to eliminate dark areas and reduce light pollution. In this paper, Binjiang District of Hangzhou was investigated.

What is the practical significance of the urban lighting model?

Additionally, at the planning level, the model's important practical significance is that it can provide a research basis for the relationship between supply and demand to assist in the formulation of urban lighting planning.

Which building has the highest lighting energy consumption?

The box plot in Fig. 1 b shows that retail building has the highest lighting energy consumption (mean = 81.54 kWh/m²/year) among the assessed buildings and this could be due to the high usage of less energy-efficient lamps in the building.



Comparative Test of 200kWh Foldable Container Lighting for Urban



["quicklier" or "more quickly"? . WordReference Forums](#)

Hi kyn, You are correct that the general rule is that if the adjective has two syllables and ends in -Y, you form the comparative by dropping the -Y and adding -ier; you ...

[Get Price](#)

[Comparative life cycle assessment of various energy ...](#)

Highlights o Electricity consumption contributes the most to the life-cycle impacts of the building. o The net-zero energy design leads to the lowest life cycle impacts. o The off-grid ...

[Get Price](#)



Supply and Demand for Planning and Construction of Nighttime Urban

Abstract and Figures Demand planning-oriented research on nighttime urban lighting provides a foundation for formulating strategies to eliminate dark areas and reduce ...

[Get Price](#)



slowlier or more slowly?

Could you please tell me which variant is correct or more widely-used in spoken English - slowlier or more slowly. I know that according to the rules of forming the comparative ...

[Get Price](#)



Comparative (shy)

How do you use the comparative form in the adjective "shy? More shy? Shyier? The last one really sounds awkward to me, but since "shy" is a one-syllable adjective I am ...

[Get Price](#)



Supply and Demand for Planning and Construction of Nighttime Urban

Demand planning-oriented research on nighttime urban lighting provides a foundation for formulating strategies to eliminate dark areas and reduce light pollution. In this ...

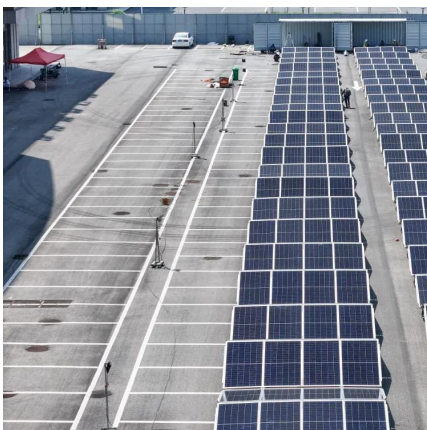
[Get Price](#)



[Supply and Demand for Planning and Construction of ...](#)

Based on the spatiotemporal geographic data and the urban lighting planning of Hangzhou, a calculation method for the supply and demand of urban lighting at night in ...

[Get Price](#)





Energy consumption, CO2 emissions and electricity costs of lighting ...

However, the energy performance, CO2 footprint and electricity costs due to lighting in buildings are currently required to assist relevant authorities to develop, revise and ...

[Get Price](#)



[how to form the comparative of color-adjectives](#)

what are the comparative form of these adjectives: orange, pink, blue, white, red, yellow, purple, blue, green, black, etc. Are there any rules for the comparative form of tese ...

[Get Price](#)

[Supply and Demand for Planning and ...](#)

Abstract and Figures Demand planning-oriented research on nighttime urban lighting provides a foundation for formulating strategies to eliminate dark areas and reduce light pollution.

[Get Price](#)



[Supply and Demand for Planning and Construction of ...](#)

Demand planning-oriented research on nighttime urban lighting provides a foundation for formulating strategies to eliminate dark areas and reduce light pollution. In this ...

[Get Price](#)





[\(PDF\) The Energy-Efficient Control Solutions ...](#)

The Energy-Efficient Control Solutions of Smart Street Lighting Systems: A Review, Issues, and Recommendations

[Get Price](#)



[Comparative, superlative: busy , WordReference Forums](#)

The other day on a local TV station, an air conditioner repair man was quoted as saying "I am more busy than ever due to the heat wave". I realize that most people would ...

[Get Price](#)

8 Innovative Lighting Solutions for Sustainable Urban Growth

Discover 8 innovative lighting solutions that enhance sustainability, safety, and urban atmosphere, including LED, solar-powered, smart adaptive, and bioluminescent lighting.

[Get Price](#)



[8 Innovative Lighting Solutions for ...](#)

Discover 8 innovative lighting solutions that enhance sustainability, safety, and urban atmosphere, including LED, solar-powered, smart adaptive, and bioluminescent lighting.

[Get Price](#)





(PDF) The Energy-Efficient Control Solutions of Smart Street Lighting

The Energy-Efficient Control Solutions of Smart Street Lighting Systems: A Review, Issues, and Recommendations

[Get Price](#)



Smart Street Lighting for Enhancing Energy Efficiency in Urban

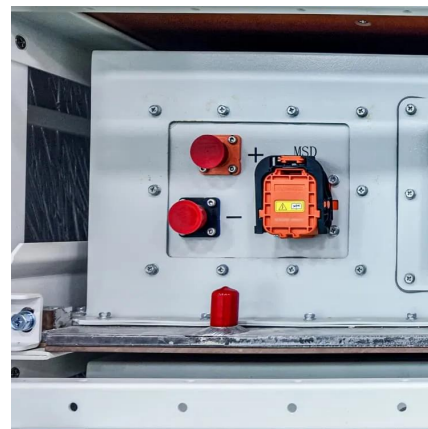
In the ever-evolving landscape of urban development, innovative solutions are constantly sought to improve the quality of life of residents. Moving away from conventional ...

[Get Price](#)

Fun (adj, comparative)

Comparative would be "We had a more fun day on Sat than on the Friday." Or, "The most fun day on the trip was the Wednesday when we visited ." As a noun, eg "It was a ...

[Get Price](#)



Comparative, superlative: clever

good good - adjective better - comparative the best - superlative Example Sentences This book is better than that one. This is the best school in the city. bad bad - ...

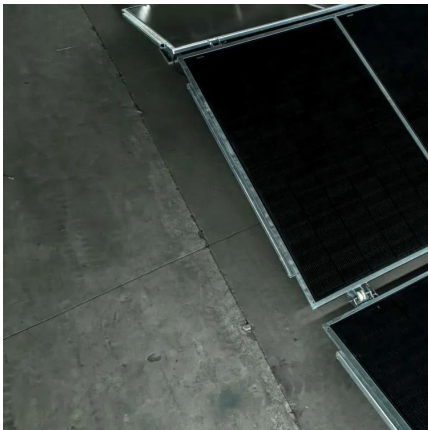
[Get Price](#)



Urban public lighting classification method and analysis of ...

In the context of large-scale urban planning evaluation, urban lighting system is an important part of urban energy consumption, and it is necessary to adopt advanced energy ...

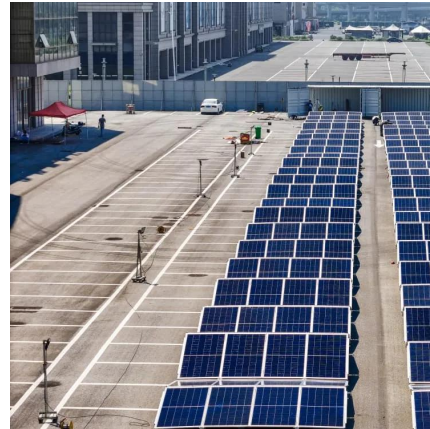
[Get Price](#)



heavier / more heavy

Hi there. As far as I'm aware, words with two syllables can form the comparative either by adding -er suffix or more. And also can form the superlative either by adding -est ...

[Get Price](#)



Energy-Efficient Lighting Technologies for Building ...

With the increasing demand for energy-efficient solutions, lighting technologies have evolved to play a pivotal role in reducing energy consumption in building applications. ...

[Get Price](#)



comparative of sad

Hello! I heard this sentence in a children's cartoon: "Now I'm even more sad than before". I was astonished. Isn't the comparative of sad = sadder (as for all one-syllable ...

[Get Price](#)



Contact Us

For catalog requests, pricing, or partnerships, please visit:
<https://germansolar.co.za>

Scan QR Code for More Information



<https://germansolar.co.za>