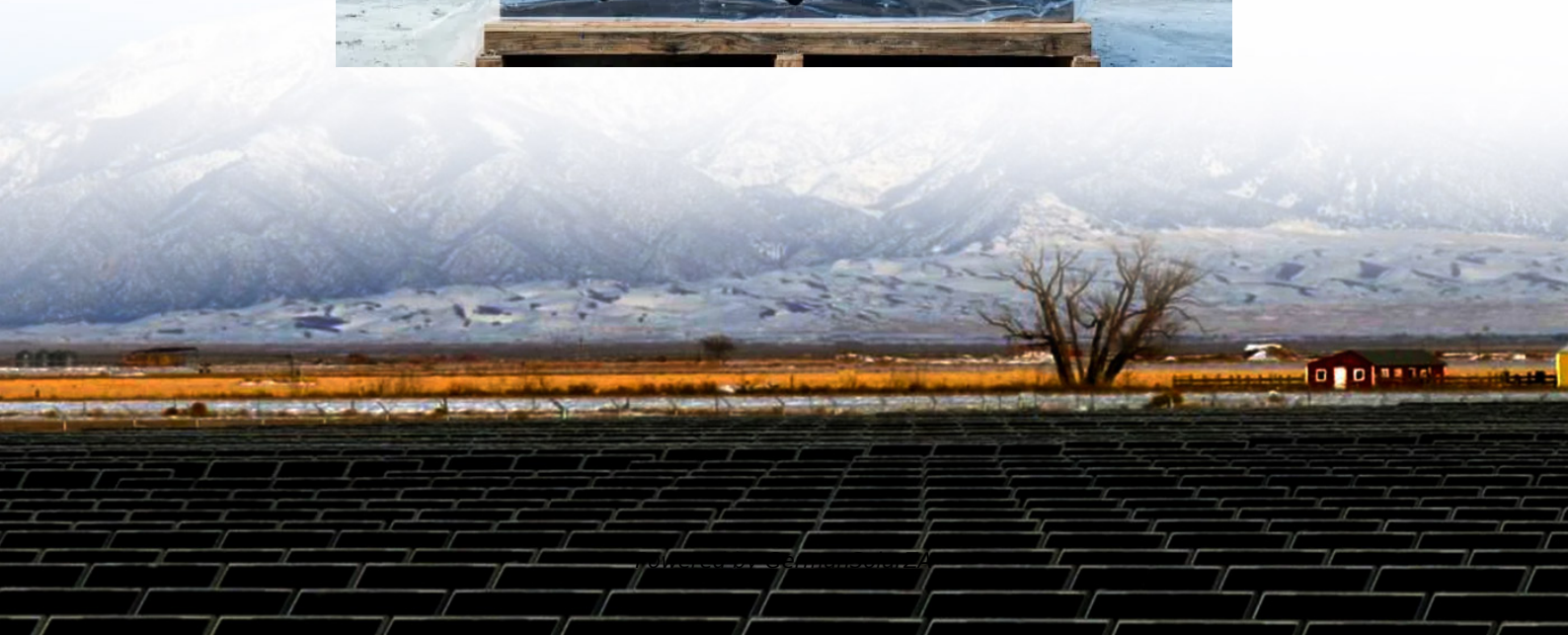


# Cylindrical cell lithium iron phosphate battery





## Overview

---

What are lithium iron phosphate (LiFePO<sub>4</sub>) batteries?

Lithium iron phosphate (LiFePO<sub>4</sub>) batteries are known for their high safety, long cycle life, and excellent thermal stability. They come in three main cell types: cylindrical, prismatic, and pouch. Each of these types has distinct characteristics that make them suitable for various applications.

What are the different types of lithium phosphate batteries?

1. Cylindrical LiFePO<sub>4</sub> Cells Cylindrical LiFePO<sub>4</sub> cells are the most commonly used type of lithium iron phosphate batteries. They resemble the shape of traditional AA or AAA batteries and are widely employed in applications where high power and durability are essential.

What is a cylindrical lithium ion battery?

Cylindrical cells one of the most widely used lithium ion battery shapes due to ease to use and good mechanical stability. The tubular cylindrical shape can withstand high internal pressures without collapsing. Melasta produces multiple sizes and capacities according to the customer requirement.

What is a thermal characterization of 18650 cylindrical lithium iron phosphate (LFP) cell?

Thermal characterization of 18650 cylindrical lithium iron phosphate (LFP) cell is conducted across a wide range of discharge rates (0.5C–6C) and operating temperatures (10 °C–60 °C). It is observed that discharge capacity decreases with increasing C-rate and decreasing temperature.



## Cylindrical cell lithium iron phosphate battery

---



### Types of LiFePO4 Battery Cells: Cylindrical, Prismatic, and ...

Types of LiFePO4 Battery Cells: Cylindrical, Prismatic, and Pouch Lithium iron phosphate (LiFePO4) batteries are known for their high safety, long cycle life, and excellent ...

[Get Price](#)



### Thermal characterization of 18650 lithium iron phosphate cell ...

Thermal characterization of 18650 cylindrical lithium iron phosphate (LFP) cell is conducted across a wide range of discharge rates (0.5C-6C) and operating temperatures (10 ...

### [Thermal Modelling and Temperature ...](#)

The present study aims at the thermal modelling of a 3.3 Ah cylindrical 26650 lithium iron phosphate cell using ANSYS 2024 R1 software. The modelling phase involves iterating two geometries of the cell design ...

[Get Price](#)



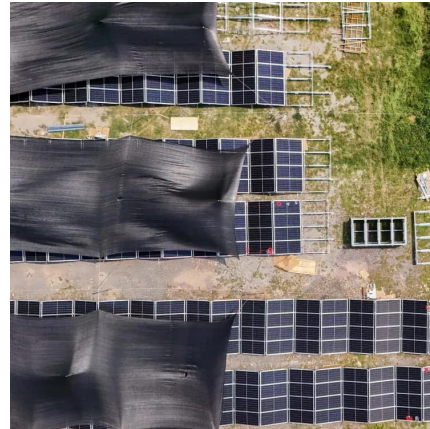
### [Lithium Iron Phosphate \(LiFePO4\) Cylindrical Cells](#)

Lithium Iron Phosphate Cylindrical Cells Cylindrical cells one of the most widely used lithium ion battery shapes due to ease to use and good mechanical stability. The tubular ...

[Get Price](#)



[Get Price](#)



[Comparison of Lithium Iron Phosphate \(LiFePO4\) Battery Cell](#)

News Comparison of Lithium Iron Phosphate (LiFePO4) Battery Cell Technologies for Marine and Mobile Applications Lithium iron phosphate batteries (LiFePO4 or LFP) used in ...

[Get Price](#)



[LiFe-Shenzhen Melasta Battery Co., Ltd](#)

These cells have high density and light weight which enable this technology to use in multiple devices. Lithium Iron Phosphate Cylindrical Cells Cylindrical cells one of the most widely used lithium ion battery shapes ...

[Get Price](#)



[Comparison of Lithium Iron Phosphate ...](#)

News Comparison of Lithium Iron Phosphate (LiFePO4) Battery Cell Technologies for Marine and Mobile Applications Lithium iron phosphate batteries (LiFePO4 or LFP) used in boats and recreational ...

[Get Price](#)



**Cylindrical LiFePO4 Cells**





Premium cylindrical LiFePO4 cells with 3,000+ cycle life, fast charging, and superior safety. Available in 18650, 26650, 32650 formats for industrial applications, energy storage, and ...

[Get Price](#)



[What is Cylindrical Lithium Iron Phosphate Battery? Uses](#)

A Cylindrical Lithium Iron Phosphate battery is a type of lithium-ion battery characterized by its cylindrical shape, typically with dimensions like 18650 or 26650.

[Get Price](#)

[Types of LiFePO4 Battery Cells: Cylindrical, ...](#)

Types of LiFePO4 Battery Cells: Cylindrical, Prismatic, and Pouch Lithium iron phosphate (LiFePO4) batteries are known for their high safety, long cycle life, and excellent thermal stability. They come in three ...

[Get Price](#)



[\[LiFePO4 Battery Types\] Cylindrical vs.](#)

LiFePO4 batteries, or lithium iron phosphate batteries, are increasingly recognized for their remarkable safety, longevity, and versatility. Their unique chemistry and design make them a preferred choice in ...

[Get Price](#)

**LiFePO4 Cylindrical Cells**



The Cylindrical Lithium Iron Phosphate (LiFePO<sub>4</sub> - LFP) range consists of 9 models in 18650 or 26650 formats. The cells have a nominal voltage of 3.2v and capacities from 1100 mAh to ...

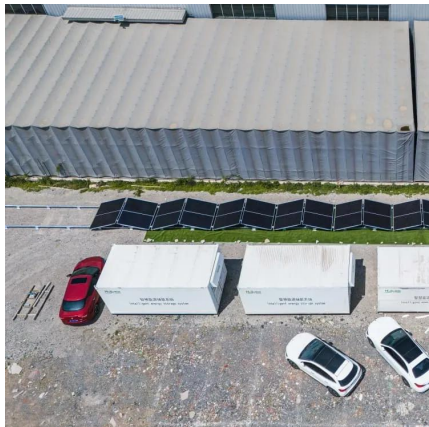
[Get Price](#)



[LiFe-Shenzhen Melasta Battery Co., Ltd](#)

These cells have high density and light weight which enable this technology to use in multiple devices. Lithium Iron Phosphate Cylindrical Cells Cylindrical cells one of the most ...

[Get Price](#)



### Thermal Modelling and Temperature Estimation of a Cylindrical Lithium

The present study aims at the thermal modelling of a 3.3 Ah cylindrical 26650 lithium iron phosphate cell using ANSYS 2024 R1 software. The modelling phase involves ...

[Get Price](#)



[\[LiFePO<sub>4</sub> Battery Types\] Cylindrical vs. Prismatic vs. Pouch](#)

LiFePO<sub>4</sub> batteries, or lithium iron phosphate batteries, are increasingly recognized for their remarkable safety, longevity, and versatility. Their unique chemistry and design make ...

[Get Price](#)



[Lithium Iron Phosphate \(LiFePO<sub>4</sub>\) Cylindrical...](#)



Lithium Iron Phosphate Cylindrical Cells  
Cylindrical cells one of the most widely used lithium ion battery shapes due to ease to use and good mechanical stability. The tubular cylindrical shape can withstand ...

[Get Price](#)



## Contact Us

---

For catalog requests, pricing, or partnerships, please visit:  
<https://germansolar.co.za>

**Scan QR Code for More Information**



<https://germansolar.co.za>