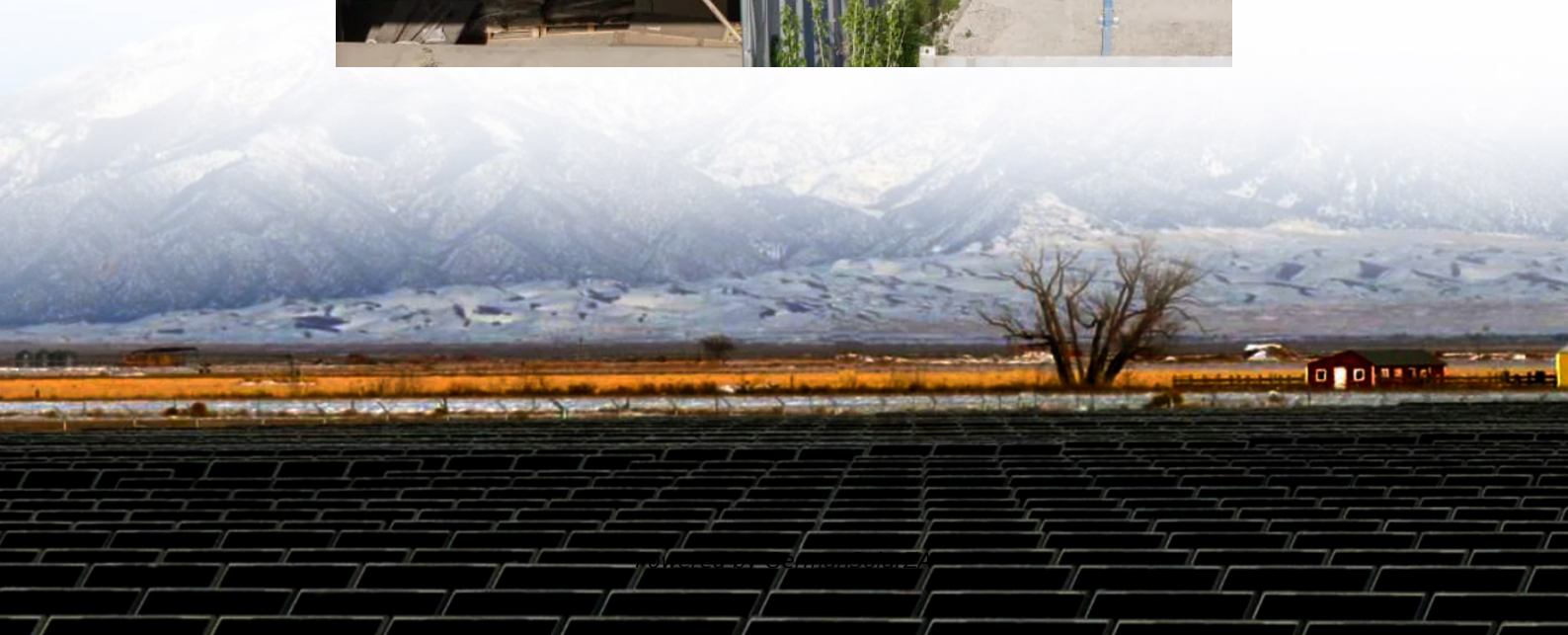


Cylindrical lithium batteries in parallel and series





Overview

What is the difference between a single battery and a parallel battery?

In parallel wiring, the total amp-hour (Ah) capacity adds up, but the voltage remains the same as a single battery. For example: □ Extended Runtime: Increased capacity allows longer operation times.

Can a battery be connected in parallel?

Do not connect batteries with different chemistries, rated capacities, nominal voltages, brands, or models in parallel, series, or series-parallel. This can result in potential damage to the batteries and the connected devices, and can also pose safety risks.

Why are lithium batteries connected in series?

Lithium batteries are connected in series when the goal is to increase the nominal voltage rating of one individual lithium battery - by connecting it in series strings with at least one more of the same type and specification - to meet the nominal operating voltage of the system the batteries are being installed to support.

What if there are only two batteries in a parallel string?

If there are only two batteries in the parallel string, we would then take a cable from the POS. (+) terminal of Battery 1 to the charger. We would use the POS. (+) terminal of Battery 2 for connection to the loads.



Cylindrical lithium batteries in parallel and series



[Series vs Parallel Battery Setup: Optimize Performance](#)

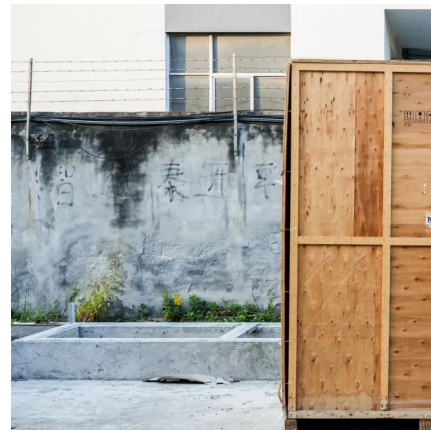
Confused about series vs. parallel lithium battery setups? Optimize performance, safety, and efficiency with these expert insights for EVs and energy systems.

[Get Price](#)

[Lithium Batteries in Series and Parallel: In ...](#)

With the development of modern technology, lithium batteries have been widely used in electronic devices due to their excellent performance. However, the voltage and capacity of a single lithium cell ...

[Get Price](#)



[Series, Parallel, and Series-Parallel ...](#)

To ensure optimal battery performance and longevity, it is essential to properly match batteries with similar characteristics, including capacity, voltage, and chemistry, when connecting them in series, parallel, or ...

[Get Price](#)



[A deep analysis of lithium battery in series and parallel](#)

In the development of modern technology, lithium batteries have become the primary power source for various electronic devices and electric motorcycles due to their high ...



[Helpful Guide to Lithium Batteries in Parallel ...](#)

Understand how to connect lithium batteries in parallel and series. Get practical tips and avoid common pitfalls. Start optimizing your battery setup today!

[Get Price](#)



[Lithium Batteries in Series and Parallel: In-Depth Analysis](#)

With the development of modern technology, lithium batteries have been widely used in electronic devices due to their excellent performance. However, the voltage and ...

[Get Price](#)



[Differences Between Series and Parallel ...](#)

Differences Between Series and Parallel Connections of 18650 Lithium Batteries 18650 lithium batteries, a common cylindrical cell format, exhibit distinct characteristics when connected in series versus parallel, ...

[Get Price](#)

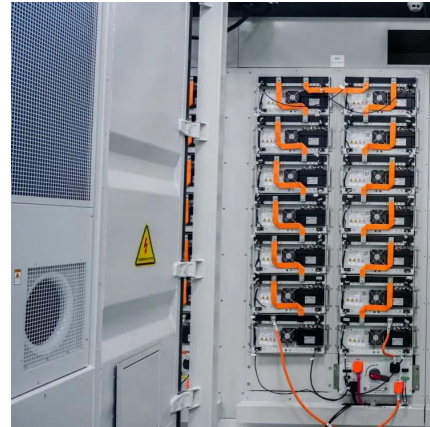




[Helpful Guide to Lithium Batteries in Parallel and Series](#)

Understand how to connect lithium batteries in parallel and series. Get practical tips and avoid common pitfalls. Start optimizing your battery setup today!

[Get Price](#)



[Series vs Parallel Battery Wiring: Key ...](#)

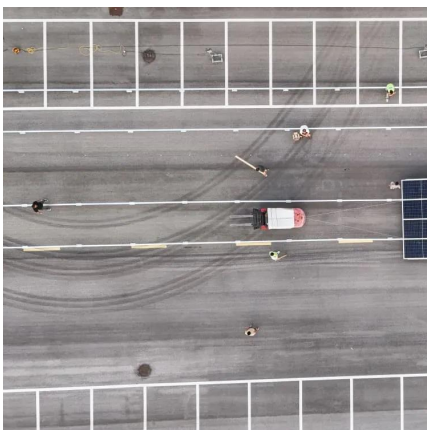
When using multiple batteries in a project, you have two primary wiring configurations--series and parallel. Each has distinct advantages depending on your needs, whether it's increasing voltage, ...

[Get Price](#)

Series, Parallel, and Series-Parallel Connections of Batteries

To ensure optimal battery performance and longevity, it is essential to properly match batteries with similar characteristics, including capacity, voltage, and chemistry, when connecting them ...

[Get Price](#)



Differences Between Series and Parallel Connections of 18650 Lithium

Differences Between Series and Parallel Connections of 18650 Lithium Batteries 18650 lithium batteries, a common cylindrical cell format, exhibit distinct characteristics when connected in ...

[Get Price](#)



Understanding Battery Pack Configurations: Series vs. Parallel ...

Battery pack configurations determine how much power a battery can provide and for how long. Whether you're choosing a battery pack for an electric vehicle, a robotics project, ...

[Get Price](#)



Series vs Parallel Battery Wiring: Key Differences, Pros & Cons

When using multiple batteries in a project, you have two primary wiring configurations--series and parallel. Each has distinct advantages depending on your needs, ...

[Get Price](#)

[Lithium Series, Parallel and Series and Parallel](#)

In the development of modern technology, lithium batteries have become the primary power source for various electronic devices and electric motorcycles due to their high energy density and charging ...

[Get Price](#)



[Series vs Parallel Battery Wiring: The Ultimate 2025 Guide](#)

Learn the key differences between series and parallel battery wiring. Discover how to optimize voltage, capacity, and performance for your energy needs in 2025.

[Get Price](#)



[Lithium Series, Parallel and Series and Parallel](#)

Lithium Series, Parallel and Series and Parallel Connections Introduction Lithium battery banks using batteries with built-in Battery Management Systems (BMS) are created by ...

[Get Price](#)



Contact Us

For catalog requests, pricing, or partnerships, please visit:
<https://germansolar.co.za>

Scan QR Code for More Information



<https://germansolar.co.za>