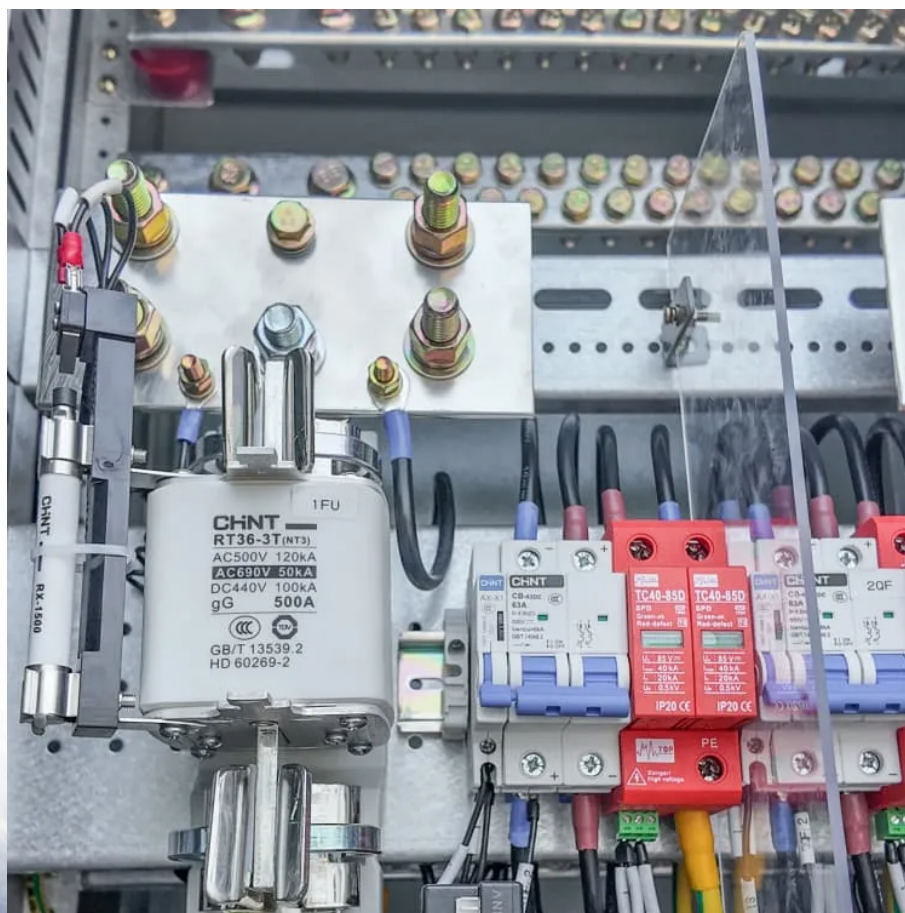


Does the construction of wind-solar complementary solar container communication stations require authorization





Overview

Can a multi-energy complementary power generation system integrate wind and solar energy?

Simulation results validated using real-world data from the southwest region of China. Future research will focus on stochastic modeling and incorporating energy storage systems. This paper proposes constructing a multi-energy complementary power generation system integrating hydropower, wind, and solar energy.

Does China have a potential for hydro-wind-solar complementary development?

China has made considerable efforts with respect to hydro- wind-solar complementary development. It has abundant resources of hydropower, wind power, and solar power and shows promising potential for future development.

Do wind and solar power complement each other well?

It is clear that regardless of the wind and solar curtailment rate, the optimal installed capacity ratio is close to 1:1. This indicates that wind power and solar power complement each other well based on typical daily output data selected from the entire year, thereby demonstrating the necessity of simultaneous development of wind and solar power.

What is the maximum integration capacity of wind and solar power?

At this ratio, the maximum wind-solar integration capacity reaches 3938.63 MW, with a curtailment rate of wind and solar power kept below 3 % and a loss of load probability maintained at 0 %. Furthermore, under varying loss of load probabilities, the total integration capacity of wind and solar power increases significantly.



Does the construction of wind-solar complementary solar container



[How to integrate wind and solar complementarity in ...](#)

A wind-solar hybrid and power station technology, applied in the field of communication, can solve problems such as the difficulty of power supply for communication ...

[Get Price](#)

[Construction of wind and solar complementary ...](#)

The successful grid connection of a 54-MW/100-kWp wind-solar complementary power plant in NanâEUR(TM)ao, Guangdong Province, in 2004 was the first windâEUR"solar ...

[Get Price](#)



[Communication base station wind and solar ...](#)

The wind-solar-diesel hybrid power supply system of the communication base station is composed of a wind turbine, a solar cell module, an integrated controller for hybrid ...

[Get Price](#)

[Wind-solar hybrid for outdoor communication base ...](#)

Integrated Solar-Wind Power Container for Communications This large-capacity, modular outdoor base station seamlessly integrates photovoltaic, wind power, and energy ...



[Get Price](#)



Overview of hydro-wind-solar power complementation development in China

China has made considerable efforts with respect to hydro- wind-solar complementary development. It has abundant resources of hydropower, wind power, and solar ...

[Get Price](#)

Integrated Solar-Wind Power Container for Communications

This large-capacity, modular outdoor base station seamlessly integrates photovoltaic, wind power, and energy storage to provide a stable DC48V power supply and optical distribution. Perfect ...

[Get Price](#)



Design of a Wind-Solar Complementary Power Generation ...

In order to improve the utilization efficiency of wind and photovoltaic energy resources, this paper designs a set of wind and solar complementary power generation ...

[Get Price](#)



[Communication base station wind and solar ...](#)

The system configuration of the communication base station wind solar complementary project includes wind turbines, solar modules, communication integrated ...

[Get Price](#)



The latest requirements for wind and solar complementary ...

What is the complementary coefficient between wind power stations and photovoltaic stations? Utilizing the clustering outcomes, we computed the complementary coefficient R ...

[Get Price](#)

[Optimal Design of Wind-Solar complementary power ...](#)

The results indicate that a wind-solar ratio of around 1.25:1, with wind power installed capacity of 2350 MW and photovoltaic installed capacity of 1898 MW, results in ...

[Get Price](#)



Contact Us

For catalog requests, pricing, or partnerships, please visit:
<https://germansolar.co.za>



Scan QR Code for More Information



<https://germansolar.co.za>