

Does the inverter consume electricity quickly when it switches to 220





Overview

How much power does an inverter use?

The average draw from the batteries when an inverter is turned on with no load attached depends on the efficiency of the inverter and its standby power consumption. In general, the standby power consumption of most inverters is relatively low, typically less than 1% of their rated power output.

Do inverters consume a lot of energy during a power outage?

Well, during extreme power outages, you will have to use your inverter more than usual, which will increase your energy consumption. Moreover, you can only limit your consumption if your downtime is not that much, and you do not have to discharge your inverter's battery.

Do inverters increase energy costs?

An inverter converts direct current (DC) from sources such as batteries or solar panels into alternating current (AC). Its primary function is to store power, and there is a common misconception that inverters increase energy costs. So, does inverter increase electricity bill?

.

What is an inverter & how does it work?

An inverter is an electronic appliance that powers your household during power outages. It stores electricity in its batteries and requires charging for efficient functioning. However, its main purpose is to convert DC power to AC, which is then transmitted to the domestic or commercial sectors.



Does the inverter consume electricity quickly when it switches to 220



Does the inverter consume electricity quickly when it is switched to 220

The energy consumed is primarily used for charging the batteries during regular power supply, and during power outages, the inverter seamlessly switches to battery power, maintaining a

[Get Price](#)

Does Inverter Increase Electricity Bill?

Frequent Power Outage Rare Power Outage Does An Inverter Consume Electricity After Full Charging of Battery? Do Inverters Use A Lot of Electricity? How Much Inverter Consume Electricity? Does Inverter AC Reduce Electricity Bill? Yes, inverter ACs can help reduce electricity bills and are thus known to be more energy efficient compared to conventional ACs. Inverter ACs can adjust the compressor speed based on the required temperature of the room, whereas traditional ones run at a fixed speed. Thus, inverter ACs are more efficient and use less energy, resulting in lower ener See more on energy theory redtransicionenergeticapopular



Does the inverter consume electricity quickly when it switches to 220

Does an inverter consume power when not in use? Yes, an inverter turned on but not in use will draw power. The amount of power drawn can range between 0.2 amps to 2.0 amps depending ...

[Get Price](#)

[Inverter Efficiency: Understanding How Much Power You're ...](#)



Discover Innotinum, a leading battery energy storage system manufacturer, offering cutting-edge all-in-one energy storage systems. Our advanced battery energy storage inverter ...

[Get Price](#)

[Does Inverter Increase Electricity Bill?](#)

An inverter converts direct current (DC) from sources such as batteries or solar panels into alternating current (AC). Its primary function is to store power, and there is a ...

[Get Price](#)



Does the inverter consume electricity quickly when it switches to 220

Does an inverter consume power when not in use? Yes, an inverter turned on but not in use will draw power. The amount of power drawn can range between 0.2 amps to 2.0 amps depending ...

[Get Price](#)

[Does an Inverter Increase Your Electricity Bill? A](#)

...

Conclusion In conclusion, using an inverter can result in a higher electricity bill due to its power consumption. However, the use of an inverter can also lead to savings by improving the ...

[Get Price](#)





[Does An Inverter Use A Lot Of Electricity?](#)

The power consumption of the inverter will vary depending on the size and number of devices connected to it. It's like being at an all-you-can-eat buffet--only the more devices ...

[Get Price](#)

[How much power does an inverter use on ...](#)

Does an inverter consume power with no load is connected? Here, we will explain how much power does an inverter consume without load and how to reduce the electricity depletion.

[Get Price](#)



Do Inverters Increase Your Electricity Bills? Here's The ...

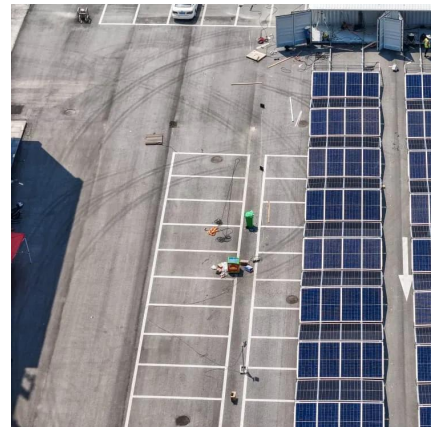
Conclusion Inverters are an integral part of solar power systems. They help save energy that can be effectively used during periods of outage. In spite of its remarkable use, will ...

[Get Price](#)

[Understanding Inverter Power Consumption: Do Inverters ...](#)

In today's energy-conscious world, many homeowners and businesses are increasingly turning to energy-efficient solutions, and inverters have become an essential part ...

[Get Price](#)





[Do inverters consume a lot of electricity?](#)

How much electricity does an inverter consume? Power conversion losses from converting 12v DC battery power to 230v AC mains power in an inverter uses about 10% more power than the ...

[Get Price](#)



[Does An Inverter Use A Lot Of Electricity?](#)

The power consumption of the inverter will vary depending on the size and number of devices connected to it. It's like being at an all-you-can-eat buffet--only the more devices you have connected, the more ...

[Get Price](#)



[How much power does an inverter use on standby - PowMr](#)

Does an inverter consume power with no load is connected? Here, we will explain how much power does an inverter consume without load and how to reduce the electricity ...

[Get Price](#)

Contact Us

For catalog requests, pricing, or partnerships, please visit:
<https://germansolar.co.za>



Scan QR Code for More Information



<https://germansolar.co.za>