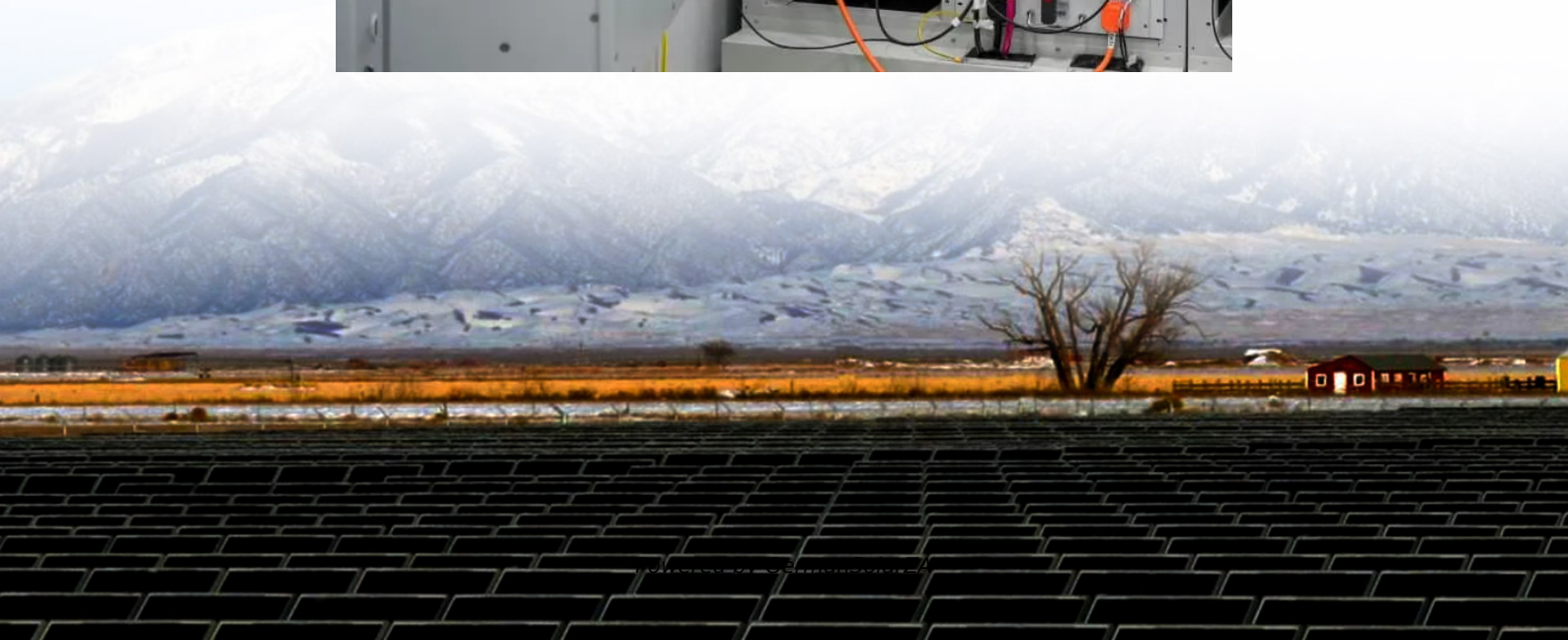


How big a battery should I use for a large inverter





Overview

What is the recommended battery size for an inverter?

Interpreting Results: Once you input the required data, the calculator will generate the recommended battery size in ampere-hours (Ah). For instance, if your power consumption is 500 watts, the usage time is 4 hours, and the inverter efficiency is 90%, the calculator might suggest a battery size of approximately 222 Ah.

Why should you use the calculate battery size for inverter calculator?

Using the Calculate Battery Size for Inverter Calculator can significantly streamline your power management process. This tool is particularly beneficial in scenarios where precise power estimation is critical, such as designing renewable energy systems, ensuring backup power in off-grid locations, or optimizing battery usage for cost efficiency.

How much battery should a 500 watt inverter use?

For instance, if your power consumption is 500 watts, the usage time is 4 hours, and the inverter efficiency is 90%, the calculator might suggest a battery size of approximately 222 Ah. Practical Tips: Ensure all input values are accurate to avoid skewed results.

How many batteries do I need for a 12V inverter?

Ensure the configuration matches your inverter system's specifications. Example: If you need 658 Ah at 12V and choose 12V, 200 Ah batteries, you would need: $658 \text{ Ah} / 200 \text{ Ah per battery} \approx 3.29$ batteries Round up to 4 batteries, but keep in mind that over-sizing can be more efficient in some cases.



How big a battery should I use for a large inverter



[How Do I Match My Battery Size to My Inverter?](#)

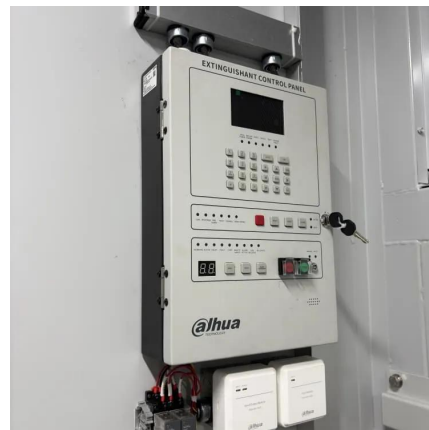
Matching your battery size to your inverter is essential for ensuring efficient power usage and preventing system overloads. A well-sized battery will provide adequate energy for your ...

[Get Price](#)

[Calculate Battery Size for Inverter Calculator](#)

The Calculate Battery Size for Inverter Calculator helps you determine the optimal battery capacity needed to support your inverter system. By inputting critical parameters such ...

[Get Price](#)



[Calculate Battery Size For Any Size Inverter \(Using Our ...](#)

An inverter can indeed be too big for your battery bank. An oversized inverter might waste energy and raise operating costs. To prevent this, ensure the inverter size matches your ...

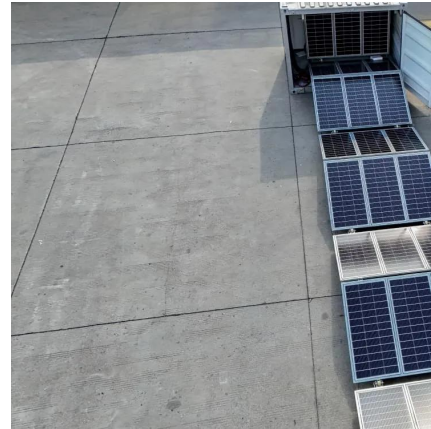
[Get Price](#)



[Calculate Battery Size For Any Size Inverter \(Using Our ...](#)

So I have made it easy for you, use the calculator below to calculate the battery size for 200 watt, 300 watt, 500 watt, 1000 watt, 2000 watt, 3000 watt, 5000-watt inverter

[Get Price](#)



[Solar Inverter & Battery Sizing Calculator](#)

Choosing the correct inverter and battery size is crucial for every microgrid system. Our Solar Inverter and Battery Sizing Calculator provides a simple and user-friendly solution.

[Get Price](#)



[Calculate Battery Size for Inverter Calculator](#)

The Calculate Battery Size for Inverter Calculator helps you determine the optimal battery capacity needed to support your inverter system. By inputting critical parameters such as power consumption, ...

[Get Price](#)



How to Calculate the Right Battery Size for Your Inverter ...

Calculating the correct battery size ensures that your inverter system can meet your power needs without leaving you in the dark during outages. An undersized battery may not provide enough ...

[Get Price](#)



[1000W Inverter: How Many Batteries Do You Really Need?](#)



Learn how many batteries you really need for a 1000W inverter. Compare lead-acid vs lithium setups, wiring, fuse size, and battery life tips.

[Get Price](#)



Inverter Sizing: Can Your Inverter Be Too Big For Your Battery ...

An inverter can indeed be too big for your battery bank. An oversized inverter might waste energy and raise operating costs. To prevent this, ensure the inverter size matches your ...

[Get Price](#)



[Can an Inverter Be Too Big for Your Battery System?](#)

Why Battery Chemistry Matters in Inverter Sizing
Lithium-ion batteries tolerate higher discharge rates (up to 1C) compared to lead-acid (0.5C). A 100Ah LiFePO4 battery can safely power a ...

[Get Price](#)



[Can a Battery Be Too Big for an Inverter?](#)

Yes, a battery can be too big for an inverter, leading to inefficiencies and potential safety issues. Oversized batteries may not discharge correctly or could exceed the inverter's ...

[Get Price](#)



[How to Calculate the Right Battery Size for ...](#)



Calculating the correct battery size ensures that your inverter system can meet your power needs without leaving you in the dark during outages. An undersized battery may not provide enough backup power, while an ...

[Get Price](#)



[Solar Inverter & Battery Sizing Calculator](#)

Choosing the correct inverter and battery size is crucial for every microgrid system. Our Solar Inverter and Battery Sizing Calculator provides a simple and user-friendly solution.

[Get Price](#)



Battery to Inverter Calculator

Calculate the optimal battery size for your inverter with our battery to inverter calculator; find out the required battery capacity for your inverter with our battery power ...

[Get Price](#)



Contact Us

For catalog requests, pricing, or partnerships, please visit:
<https://germansolar.co.za>



Scan QR Code for More Information



<https://germansolar.co.za>