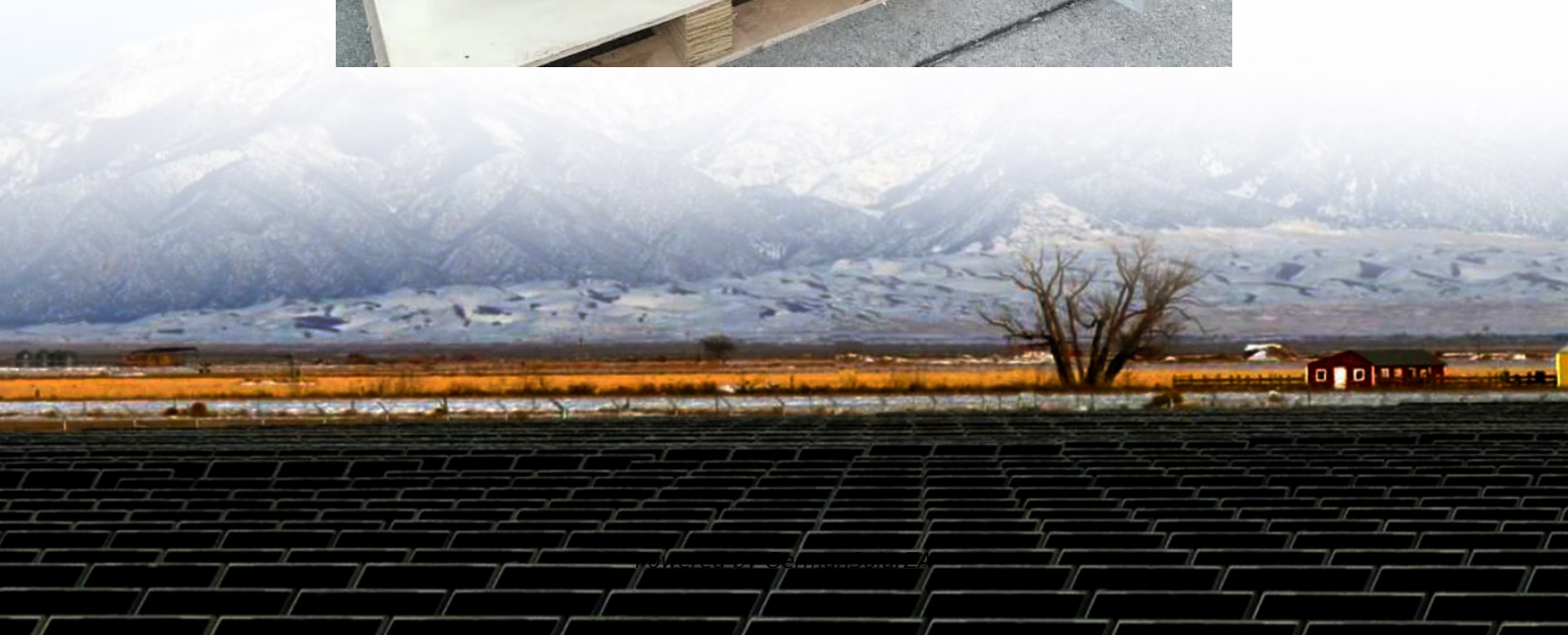


# How big an inverter should I use with a 60ah





## Overview

---

What is the recommended battery size for an inverter?

Interpreting Results: Once you input the required data, the calculator will generate the recommended battery size in ampere-hours (Ah). For instance, if your power consumption is 500 watts, the usage time is 4 hours, and the inverter efficiency is 90%, the calculator might suggest a battery size of approximately 222 Ah.

What size inverter for a 12V 200Ah battery?

For a 12V 200Ah battery (2.4kWh), a 2000W inverter is ideal. Formula:  $\text{Inverter Wattage} \leq (\text{Battery Voltage} \times \text{Ah Rating} \times 0.8)$ . Factor in surge power needs but prioritize sustained loads. Always check the battery's max discharge rate (C-rate) to avoid exceeding safe limits. When sizing for 24V or 48V systems, recalculate using the higher voltage.

What size solar inverter do I Need?

Inverter Size: 1000W (with 2000W surge), 12V compatible Adding Load and Battery Expansion If you plan to add more batteries or higher AC loads in the future, select a modular inverter and oversize your solar system slightly to accommodate growth.

What wattage Inverter should I use?

Match the inverter's continuous wattage rating to the battery's discharge capacity. For a 12V 200Ah battery (2.4kWh), a 2000W inverter is ideal. Formula:  $\text{Inverter Wattage} \leq (\text{Battery Voltage} \times \text{Ah Rating} \times 0.8)$ . Factor in surge power needs but prioritize sustained loads.



## How big an inverter should I use with a 60ah

---



### Battery to Inverter Calculator

Battery to Inverter Calculator The Battery to Inverter Calculator is a useful tool for calculating power requirements efficiently. Whether you are planning to use an inverter for a ...

[Get Price](#)



### How to Calculate the Right Battery Size for Your Inverter ...

Calculating the correct battery size ensures that your inverter system can meet your power needs without leaving you in the dark during outages. An undersized battery may not provide enough

...

### [INVERTER SIZE GUIDE: HOW TO CALCULATE WHAT YOU ...](#)

Battery Drain: Bigger inverters often require more powerful batteries. Running a large inverter without sufficient battery capacity can result in short runtimes and excessive ...

[Get Price](#)



### [What Size Inverter Do I Need ?A Complete Guide to ...](#)

Discover how to select the perfect inverter size for your solar or backup power system. Learn to calculate power requirements, account for surge loads, match battery ...

[Get Price](#)



[Get Price](#)



[Determining the Solar and Inverter Size ...](#)

These systems use the grid as backup, so your solar and inverter Size doesn't need to cover 100% of daily demand--but should still handle peak production efficiently. Off-Grid Systems All power must come ...

[Get Price](#)



[Can an Inverter Be Too Big for Your Battery System?](#)

FAQ Can I use a 3000W inverter with a 200Ah battery? Only if it's a 24V lithium system. For 12V lead-acid,  $200\text{Ah} \times 12\text{V} \times 0.5\text{C} = 1200\text{W}$  max. How long will a 100Ah battery last with a 1000W ...

[Get Price](#)



[Calculate Battery Size For Any Size Inverter \(Using Our ...](#)

So I have made it easy for you, use the calculator below to calculate the battery size for 200 watt, 300 watt, 500 watt, 1000 watt, 2000 watt, 3000 watt, 5000-watt inverter

[Get Price](#)



[Calculate Battery Size for Inverter Calculator](#)





The Calculate Battery Size for Inverter Calculator helps you determine the optimal battery capacity needed to support your inverter system. By inputting critical parameters such as power consumption, ...

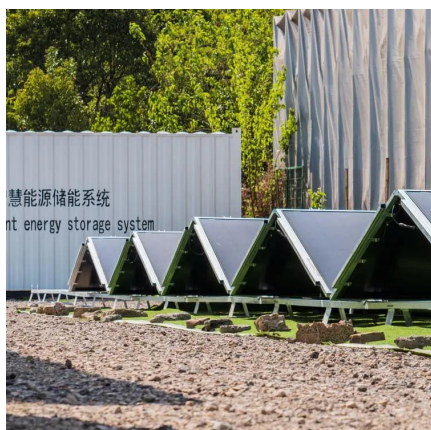
[Get Price](#)



[Calculate Battery Size for Inverter Calculator](#)

The Calculate Battery Size for Inverter Calculator helps you determine the optimal battery capacity needed to support your inverter system. By inputting critical parameters such ...

[Get Price](#)



[INVERTER SIZE GUIDE: HOW TO CALCULATE ....](#)

Battery Drain: Bigger inverters often require more powerful batteries. Running a large inverter without sufficient battery capacity can result in short runtimes and excessive wear on the battery. What's the ...

[Get Price](#)



[Choosing the Right Inverter Size for a 60Ah Battery A...](#)

Wondering how big an inverter you should use for a 60Ah battery? You're not alone! Whether you're powering a camping trip, a solar setup, or a backup system, selecting the correct ...

[Get Price](#)



[What Size Inverter Do I Need ?A Complete ...](#)



Discover how to select the perfect inverter size for your solar or backup power system. Learn to calculate power requirements, account for surge loads, match battery capacity, and avoid common mistakes to ...

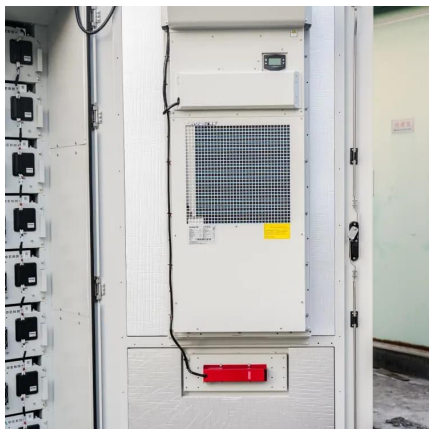
[Get Price](#)



[How to Calculate the Right Battery Size for ...](#)

Calculating the correct battery size ensures that your inverter system can meet your power needs without leaving you in the dark during outages. An undersized battery may not provide enough backup power, while an ...

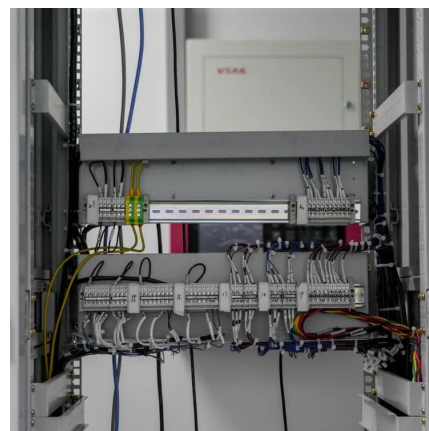
[Get Price](#)



**Determining the Solar and Inverter Size Needed to Charge a ...**

These systems use the grid as backup, so your solar and inverter Size doesn't need to cover 100% of daily demand--but should still handle peak production efficiently. Off ...

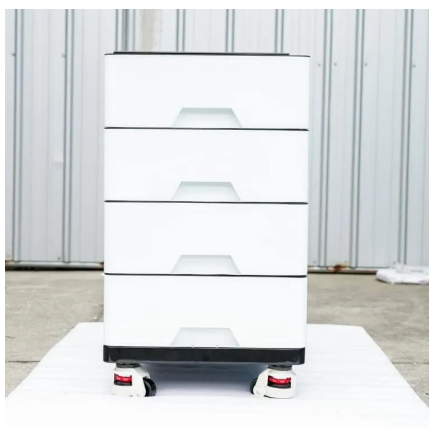
[Get Price](#)



**Inverter Sizing: Can Your Inverter Be Too Big for Your Battery ...**

An inverter can indeed be too big for your battery bank. An oversized inverter might waste energy and raise operating costs. To prevent this, ensure the inverter size matches your ...

[Get Price](#)





## Contact Us

---

For catalog requests, pricing, or partnerships, please visit:  
<https://germansolar.co.za>

### Scan QR Code for More Information



<https://germansolar.co.za>