

# How big is a size 50 solar panel





## Overview

---

What are the dimensions of standard solar panels?

Most solar panels are about 1.5 inches thick. The typical classification of solar panel sizes is based on the solar cell size, but it's not very useful for most calculations.

How big should a commercial solar panel be?

For commercial solar panel installations, panels often range from 400W to 600W, with dimensions of approximately 195 x 99 x 3.81 cm (6.40 x 3.25 x 0.13 feet). Several factors affect the size of a solar panel, including the type of solar cells used, the desired wattage output, your property's size and the panel's overall efficiency.

What is the most common solar panel size?

What is the most common solar panel size for homes?

For a residential solar panel, size is fairly consistent across manufacturers: 65 inches (1.65 meters) by 39 inches (1 meter) is the average solar panel size that you find on the roofs of houses. That is about 5.4 feet long and 3.25 feet wide, which equates to around 15 square feet.

How much wattage does a solar panel take?

Solar panel sizes and wattage range from 250W to 450W, taking up 1.6 to 2 square metres per panel. One of the most important things to consider when getting solar panels for your home is the specific solar panel size and dimensions.



## How big is a size 50 solar panel

---



### [How Big is a Solar Panel? The Solar Panel Size Guide](#)

Most residential panels range between 250 and 400 watts per hour. As solar technology advances, the size of solar panels is decreasing as efficiency increases.

[Get Price](#)

### **Understanding Solar Panel Dimensions In 2025: A Complete Size ...**

Explore the most common solar panel dimensions in 2025, including residential and commercial sizes. Learn how solar panel size dimensions affect power, installation, and ...

[Get Price](#)



### [Detailed Guide to Solar Panel Size & Dimensions](#)

Looking to install solar panels? Learn about solar panel dimensions, wattage, cell types, and how to calculate the system size for your home's energy needs.

[Get Price](#)



### **How Big are Solar Panels?**

The size of the solar panel determines its specific use and the type of energy system it is best suited for: Small portable panels are better suited for small off-grid applications, such as ...

[Get Price](#)



## The Ultimate Guide to Solar Panel Size, Weight & Wattage ...

Introduction Solar Panel Size, Weight & Wattage  
Standard residential solar panels are typically around 5.8 feet long by 3.5 feet wide and weigh between 40 to 50 pounds. ...

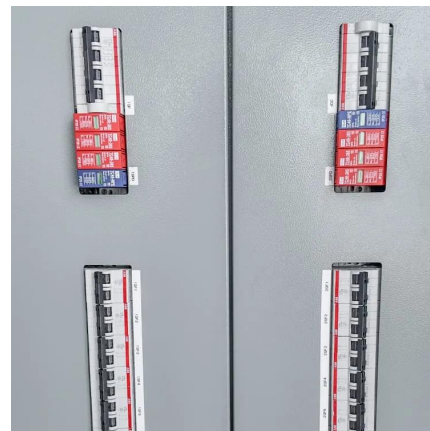
[Get Price](#)



## [Standard Solar Panel Sizes And Wattages \(100W-500W ...](#)

Standard Solar Panel Sizes And Wattages (100W-500W Dimensions) Whenever you want to find out what the standard solar panel sizes and wattages are, you encounter a big ...

[Get Price](#)



## [Guide to Solar Panel Sizes & Dimensions \(October 2025\)](#)

Solar panel size refers to the total amount of power a solar panel can generate over a period of time Solar panel dimensions refers to the physical size of a solar panel Solar ...

[Get Price](#)







### [Solar Panel Size & Dimensions Guide 2025 . Complete Specs](#)

Complete guide to solar panel sizes and dimensions. Compare 60-cell vs 72-cell panels, weights, roof space requirements, and installation specs for 2025.

[Get Price](#)



### [Solar Panel Size and Weight: How Big Are Solar Panels?](#)

The size and weight of solar panels vary depending on the make and model, with most residential panels measuring about 5.5 feet by 3 feet and weighing between 40 and 50 ...

[Get Price](#)

### [Solar Panel Size Guide . Best Panel Size for Your Roof](#)

Learn how to choose the ideal solar panel size for your home. Get expert tips, standard dimensions, and a size chart to simplify your solar decisions.

[Get Price](#)



## Contact Us

---

For catalog requests, pricing, or partnerships, please visit:  
<https://germansolar.co.za>



## Scan QR Code for More Information



<https://germansolar.co.za>