

How big is the area of 1m watt of solar energy





Overview

How much solar energy is received per square meter?

The amount of solar intensity received by the solar panels is measured in terms of square per meter. The sunlight received per square meter is termed solar irradiance. As per the recent measurements done by NASA, the average intensity of solar energy that reaches the top atmosphere is about 1,360 watts per square meter.

How many solar panels does a 1 MW solar farm have?

A 1 MW solar farm typically features between 3,000 to 5,000 solar panels, depending on their efficiency and size. Inverters: These devices convert the DC power generated by the solar panels into AC power, which is compatible with the electrical grid. Mounting Structures: These are the frames or trackers that hold the solar panels in place.

How to calculate solar power per square meter?

You can calculate the solar power per square meter with the following calculators. 1. For Off-Grid It is the system that generates its own power with panels and a battery bank. In the off-grid calculator select from the option, shed cabin, house, or portable. Next, select the days of full autonomy, etc. 2. Solar Savings Calculator.

How much land does a 1 MW solar power plant need?

When diving into the solar farm field, a burning question often surfaces: How much land does one need to launch a 1 MW solar power plant?

Well, buckle up because we're about to break it down. Generally speaking, for every megawatt (MW) of solar power you aim to generate, you'll need anywhere from 5-10 acres of land.



How big is the area of 1m watt of solar energy



[How to Calculate the Surface Area Required ...](#)

Total Power Output = Total Area x Solar Irradiance x Conversion Efficiency We know the required Total Output Power is 1000 Watts (10 panels x 100 Watts), the Solar Irradiance for a surface ...

[Get Price](#)

Photovoltaics

Photovoltaics - Calculate Power and Surface Area Calculator for the power per area or area per power of a photovoltaic system and of solar modules. You can enter the size of the modules ...

[Get Price](#)



[How to calculate the number of solar panels ...](#)

To determine the number of PV solar panels needed to generate 1MW of power and the land area required, we will need some specific information about the solar panels' individual capacity and the ...

[Get Price](#)

How to calculate the number of solar panels and installation area

To determine the number of PV solar panels needed to generate 1MW of power and the land area required, we will need some specific information about the solar panels' ...



[Get Price](#)



[Total Area Required for Solar Panel Installation Calculator](#)

Calculate the total area needed for your solar panel installation quickly and accurately with our easy-to-use solar panel area calculator.

[Get Price](#)



[Solar Power per Square Meter Calculator](#)

As per the recent measurements done by NASA, the average intensity of solar energy that reaches the top atmosphere is about 1,360 watts per square meter. You can ...

[Get Price](#)



[How many square meters of solar energy is one solar watt](#)

In the realm of solar energy, one watt of solar power can be understood through various metrics. 1. A solar watt represents a measurement of power; 2. The energy produced ...

[Get Price](#)





[How Much Land For 1 Mw Solar Farm: A Quick Guide](#)

Discover how much land for 1 MW solar farm is required, factors influencing size, and maximizing efficiency in our comprehensive guide.

[Get Price](#)



Solar Panel Output Per Square Meter

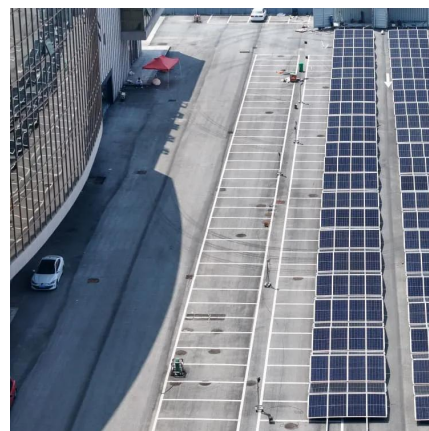
Discover how much electricity solar panels generate per square meter, explore efficiency factors, technology comparisons, and future innovations in photovoltaic energy.

[Get Price](#)

[Solar Energy Generation Per Square Metre: A ...](#)

With the rising demand for renewable energy, solar panels for home have become a popular choice for homeowners looking to reduce electricity bills and contribute to a sustainable future. But before making ...

[Get Price](#)



[Total Area Required for Solar Panel ...](#)

Calculate the total area needed for your solar panel installation quickly and accurately with our easy-to-use solar panel area calculator.

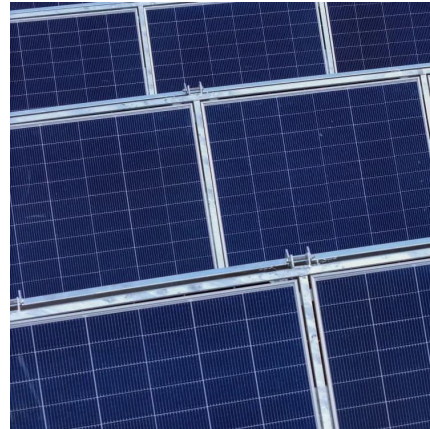
[Get Price](#)



Solar Energy Generation Per Square Metre: A Complete Guide

With the rising demand for renewable energy, solar panels for home have become a popular choice for homeowners looking to reduce electricity bills and contribute to a ...

[Get Price](#)



How to Calculate the Surface Area Required by Solar Panels

Total Power Output = Total Area x Solar Irradiance x Conversion Efficiency We know the required Total Output Power is 1000 Watts (10 panels x 100 Watts), the Solar ...

[Get Price](#)

Solar Power per Square Meter Calculator

Discover how much land for 1 MW solar farm is required, factors influencing size, and maximizing efficiency in our comprehensive guide.

[Get Price](#)



Photovoltaics

Photovoltaics - Calculate Power and Surface Area Calculator for the power per area or area per power of a photovoltaic system and of solar modules. You can enter the size of the modules and click from top to bottom, or ...

[Get Price](#)



[Sizing Up the Sun: Unpacking the Scale of a 1 MW Solar Farm](#)

As the world shifts towards renewable energy, solar power has emerged as a leading contender in the fight against climate change. With the cost of solar panels ...

[Get Price](#)



Contact Us

For catalog requests, pricing, or partnerships, please visit:
<https://germansolar.co.za>

Scan QR Code for More Information



<https://germansolar.co.za>