

How many °C does it take for Belgian solar container lithium battery pack to be charged quickly





Overview

What temperature should a lithium battery be stored?

The ideal operating temperature range for lithium batteries is 15°C to 35°C (59°F to 95°F). For storage, it is best to keep them in a temperature range of -20°C to 25°C (-4°F to 77°F). Extreme temperatures can significantly affect performance, safety, and lifespan.

How to store lithium batteries in cold weather?

Lithium batteries power solar systems but need protection from cold. Store them above freezing, monitor temperatures, and never charge when frozen for optimal performance and safety. This article will take us to understand the correct storage conditions of lithium batteries, lithium batteries in cold weather: how to store safely.

Do lithium batteries need temperature alerts?

Many battery management systems include temperature alerts. Lithium batteries power solar systems but need protection from cold. Store them above freezing, monitor temperatures, and never charge when frozen for optimal performance and safety.

Can a lithium battery be charged outside the ideal temperature range?

Yes. Most lithium batteries will still operate well outside the ideal temperature range. They can still function optimally within -20°C to 60°C / -4°F to 140°F when discharging and 0°C to 45°C / 32°F to 113°F when charging.



How many °C does it take for Belgian solar container lithium battery



[Lithium Battery Temperature Ranges: ...](#)

Learn optimal lithium battery temperature ranges for use and storage. Understand effects on performance, efficiency, lifespan, and safety.

[Get Price](#)

A Guide to Lithium Battery Temperature Ranges for Optimal ...

The ideal operating temperature range for lithium batteries is 15°C to 35°C (59°F to 95°F). For storage, it is best to keep them in a temperature range of -20°C to 25°C (-4°F to 77°F).

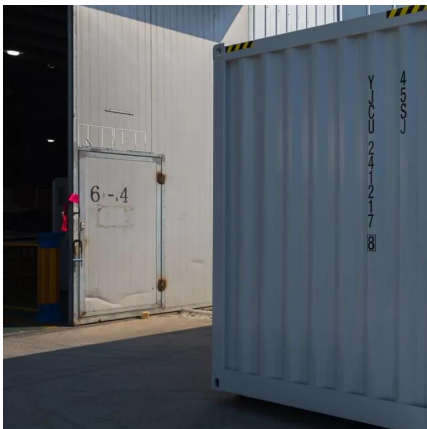
[Get Price](#)



[Lithium Batteries in Cold Weather: Things You Need to Know](#)

Cold weather can impact lithium battery performance. Learn what you need to know to protect your batteries and ensure reliable operation in freezing conditions.

[Get Price](#)



[Lithium Batteries in Cold Weather: How to ...](#)

This article will take us to understand the correct storage conditions of lithium batteries, lithium batteries in cold weather: how to store safely.

[Get Price](#)



[Lithium Battery Temperature Ranges: Operation & Storage](#)

Learn optimal lithium battery temperature ranges for use and storage. Understand effects on performance, efficiency, lifespan, and safety.

[Get Price](#)

[A Guide to Lithium Battery Temperature ...](#)

The ideal operating temperature range for lithium batteries is 15°C to 35°C (59°F to 95°F). For storage, it is best to keep them in a temperature range of -20°C to 25°C (-4°F to 77°F).

[Get Price](#)



[Lithium Batteries in Cold Weather: How to Store Them Safely?](#)

This article will take us to understand the correct storage conditions of lithium batteries, lithium batteries in cold weather: how to store safely.

[Get Price](#)





How to Optimize Lithium Solar Battery Performance in Cold ...

Learn how to enhance the performance of lithium solar batteries in cold climates. To ensure efficiency, longevity, and safety in low temperatures.

[Get Price](#)



[Impact of Temperature on Li-ion Batteries Solar Energy](#)

Explore how temperature extremes impact Li-ion battery performance & safety in lithium battery factory production, LiFePO4 solar storage systems, and practical thermal ...

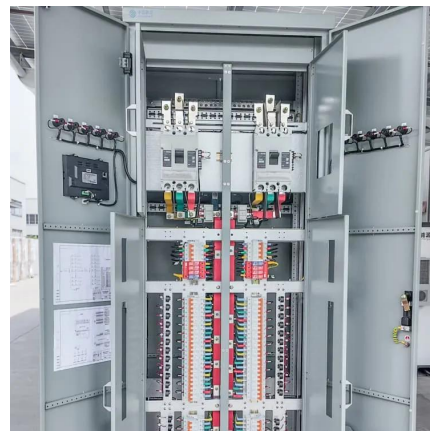
[Get Price](#)



[Comprehensive Guide to Lithium Battery ...](#)

Effective lithium battery temperature management protects your battery packs from dangerous failures and costly downtime. Poor temperature management can trigger thermal runaway or rapid capacity ...

[Get Price](#)



[Ideal Temperature for Lithium Solar Battery](#)

The battery will require a maintenance charge between 9 to 12 months while operating in this temperature range. Batteries made of lithium-ion should be kept charged between 50 and 60 percent (SOC). Separate ...

[Get Price](#)





[Comprehensive Guide to Lithium Battery Temperature ...](#)

Effective lithium battery temperature management protects your battery packs from dangerous failures and costly downtime. Poor temperature management can trigger ...

[Get Price](#)



[How Does Temperature Affect LFP & Lithium Battery ...](#)

Capacity and voltage steal the spotlight. Yet, temperature quietly governs both the energy you get and how long the pack lasts. Running a lithium-ion cell at a higher temperature ...

[Get Price](#)



[Ideal Temperature for Lithium Solar Battery](#)

The battery will require a maintenance charge between 9 to 12 months while operating in this temperature range. Batteries made of lithium-ion should be kept charged ...

[Get Price](#)



What is the best temperature range for charging a lithium battery pack

The temperature at which you charge your lithium battery pack has a direct impact on its lifespan. Charging within the optimal temperature range can extend the battery's life by ...

[Get Price](#)



Contact Us

For catalog requests, pricing, or partnerships, please visit:
<https://germansolar.co.za>

Scan QR Code for More Information



<https://germansolar.co.za>