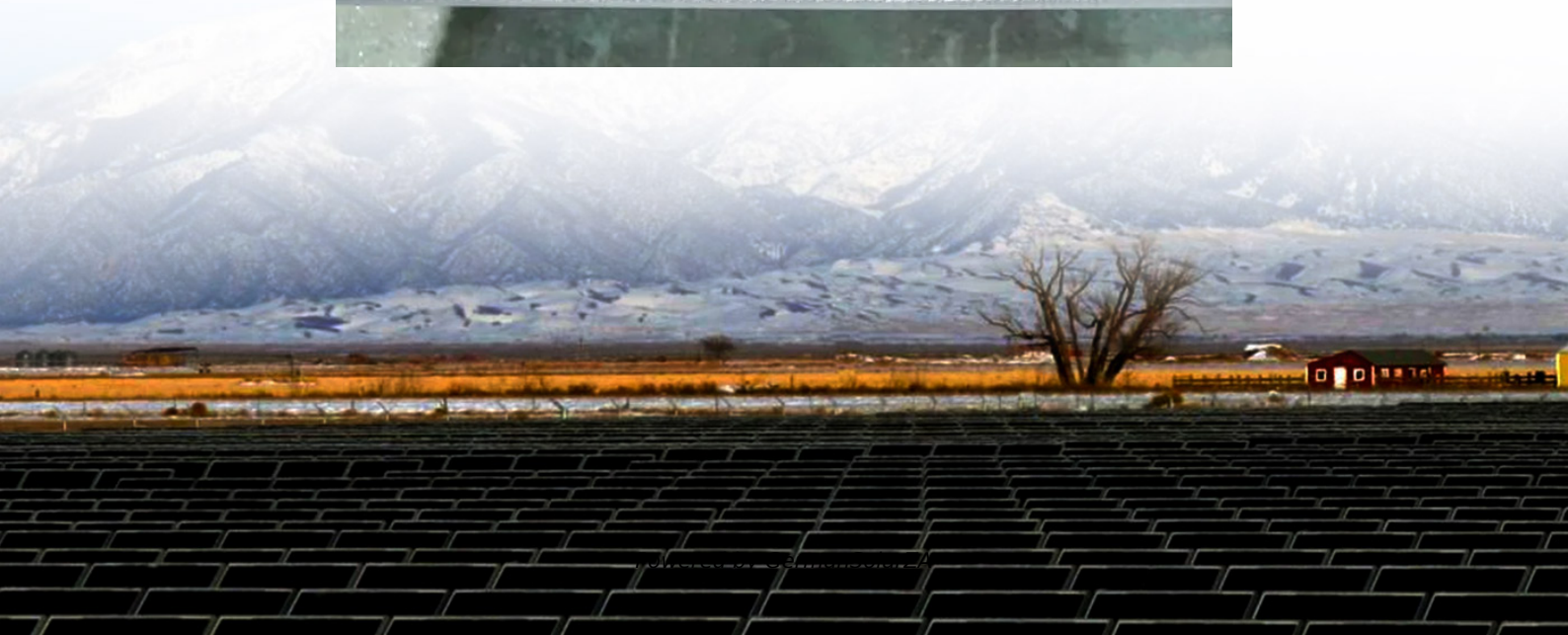


How much current should a 40A solar panel use





Overview

How do you find the average daily current output of a solar panel?

To find the average daily current output, use the formula $\text{Current (A)} = \text{Power (W)} / \text{Voltage (V)}$. 1. Current at Maximum Power (I_{mp}) The Current at Maximum Power (I_{mp}) refers to the amount of current a solar panel produces when it's operating at its maximum power output.

How to calculate solar panel current?

The current (in amperes, A) produced by the solar panel can be determined using Ohm's law, where the current is the power divided by the voltage:
 $\text{Current (A)} = \text{Power (W)} / \text{Voltage (V)}$ Given that our adjusted power output is 258W and the operating voltage of the panels is 36V, we can substitute these values into the formula to find the current:.

What is a solar panel rated in Watts?

Some key points about current for solar panels: Short Circuit Current (I_{sc}): The maximum current your panel can produce in perfect conditions. Maximum Power Current (I_{mp}): The current at your panel's most efficient operating point. You'll notice that solar panels are rated in watts. That's a very basic combination of the voltage and current.

What is solar panel calculator?

Solar Panel Calculator is an online tool used in electrical engineering to estimate the total power output, solar system output voltage and current when the number of solar panel units connected in series or parallel, panel efficiency, total area and total width.



How much current should a 40A solar panel use



Solar Panel Current Calculator

Factors like panel size, sunlight intensity, and the system's electrical characteristics influence how much electricity is generated. This article will simplify key electrical concepts related to solar energy, explain ...

[Get Price](#)

Solar Panel Current Calculator

Factors like panel size, sunlight intensity, and the system's electrical characteristics influence how much electricity is generated. This article will simplify key ...

[Get Price](#)



Solar Panel Power Calculator

Solar Panel Calculator is an online tool used in electrical engineering to estimate the total power output, solar system output voltage and current when the number of solar panel units ...

[Get Price](#)



[How much current do solar panels require?](#)

1. UNDERSTANDING SOLAR PANEL TECHNOLOGY

To comprehend how much current solar panels require, one must grasp the fundamentals of their operation. By converting sunlight into



electricity, ...

[Get Price](#)



[How to Calculate Solar Panel, Inverter, Battery Parameters](#)

Calculating Solar Panel, Inverter and Battery Charger Specifications
Estimating Load Wattage
Determining Approximate Solar Panel Dimension
Calculating Battery Ah
Evaluating Charger Controller Specifications
Assessing Inverter Specifications
1) First you will need to estimate how much watts of electricity you may require for the specified load. Let's say you have a 100 watt load that needs to be operated for approximately 10 hours, in that case the total power required could be estimated simply by multiplying the load with hours, as given under $100 \text{ Watts} \times 10 \text{ hours} = 1,000 \text{ Watt hours}$. See more on [homemade-circuits](#) [thepowersphere](#)

Understanding Solar Panel Voltage and ...

Decode solar panels specifications to safely connect your panels to power station or charge controller. This quick guide unlocks full solar potential.

[Get Price](#)

[Understanding Solar Panel Voltage and Current Output](#)

Decode solar panels specifications to safely connect your panels to power station or charge controller. This quick guide unlocks full solar potential.



[Get Price](#)



Solar Panel Power Calculator

Solar Panel Calculator is an online tool used in electrical engineering to estimate the total power output, solar system output voltage and current when the number of solar panel units connected in series or parallel, ...

[Get Price](#)



[How to Calculate Solar Panel, Inverter, Battery Parameters](#)

In this post I have explained through calculations how to select and interface the solar panel, inverter and charger controller combinations correctly, for acquiring the most ...

[Get Price](#)



How to charge solar 40a , NenPower

A solar charge controller serves as the fundamental component in a solar energy system, managing electricity transfer from solar panels to batteries. It helps maintain optimal battery levels, thereby ...

[Get Price](#)





[How much current do solar panels require? , NenPower](#)

1. UNDERSTANDING SOLAR PANEL TECHNOLOGY

To comprehend how much current solar panels require, one must grasp the fundamentals of their operation. By ...

[Get Price](#)



[How much current should the solar panel be connected to?](#)

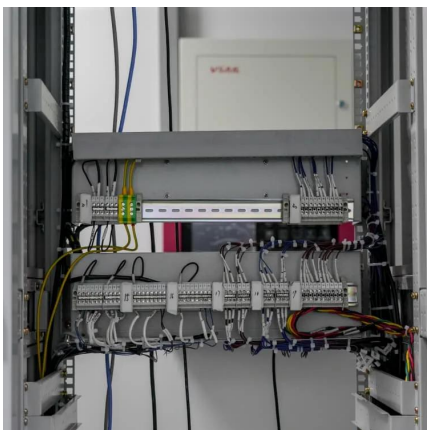
The core objective remains to match the solar panel's output to the requirements of the load or storage system effectively, ensuring sustainability and effectiveness over time. ...

[Get Price](#)

[MPPT charge controller calculator: Find the ...](#)

MPPT solar charge controllers are rated in amps (Output Current). To select a charge controller, you'll need to calculate the maximum amount of current (in Amps) that the MPPT should be able to output. This ...

[Get Price](#)



[Solar Panel Amps Calculator: What's a Panels ...](#)

This solar panel amps calculator helps you find the current of your solar panels. We also give you insight into Ohm's Law and how to read your panel's specs.

[Get Price](#)



MPPT charge controller calculator: Find the right solar charge

MPPT solar charge controllers are rated in amps (Output Current). To select a charge controller, you'll need to calculate the maximum amount of current (in Amps) that the ...

[Get Price](#)



How to charge solar 40a , NenPower

A solar charge controller serves as the fundamental component in a solar energy system, managing electricity transfer from solar panels to batteries. It helps maintain optimal ...

[Get Price](#)



Solar Panel Amps Calculator

The Current at Maximum Power (I_{mp}) refers to the amount of current a solar panel produces when it's operating at its maximum power output.

[Get Price](#)



[Solar Panel Amps Calculator: What's a Panels Current?](#)

This solar panel amps calculator helps you find the current of your solar panels. We also give you insight into Ohm's Law and how to read your panel's specs.

[Get Price](#)





Contact Us

For catalog requests, pricing, or partnerships, please visit:
<https://germansolar.co.za>

Scan QR Code for More Information



<https://germansolar.co.za>