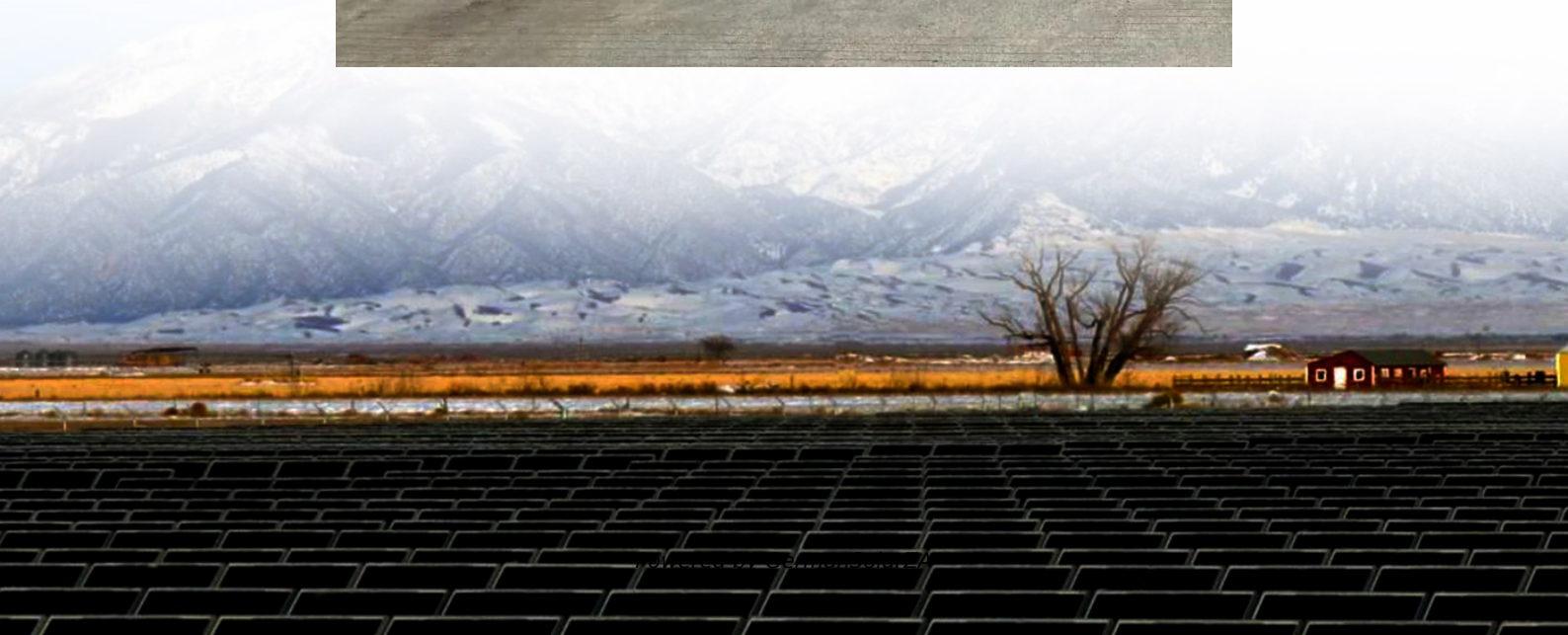


# How to match batteries with battery cabinets





## Overview

---

How do I choose a battery storage cabinet?

**Capacity Requirements:** Ensure the cabinet accommodates the quantity and size of batteries used in your workplace. **Regulatory Compliance:** Choose a cabinet that meets safety standards for Class 9 Dangerous Goods. **Durability:** Look for a heavy-duty lithium battery storage case designed for long-term use.

How do I choose a lithium-ion battery storage cabinet?

When selecting a lithium-ion battery storage cabinet, consider the following: **Capacity Requirements:** Ensure the cabinet accommodates the quantity and size of batteries used in your workplace. **Regulatory Compliance:** Choose a cabinet that meets safety standards for Class 9 Dangerous Goods.

How to wire multiple batteries in series?

To wire multiple batteries in series, connect the negative terminal (-) of one battery to the positive terminal (+) of another, and do the same to the rest. Take Renogy 12V 200Ah Core Series LiFePO4 Battery as an example. You can connect up to 4 such batteries in series. In this system, the system voltage and current are calculated as follows:.

How do I choose a series battery?

**Ensure Matching Specifications:** As with series configuration, use batteries with the same capacity and voltage. **Monitor Battery Temperature:** Batteries in parallel can experience uneven heating; keep an eye on temperature to avoid overheating. **Use Proper Wiring:** Ensure that the wires used are of sufficient gauge to handle the combined current load.



## How to match batteries with battery cabinets

---



### Series, Parallel, and Series-Parallel Connections of Batteries

To ensure optimal battery performance and longevity, it is essential to properly match batteries with similar characteristics, including capacity, voltage, and chemistry, when connecting them ...

[Get Price](#)



### [Understanding Cell Matching in Modern ...](#)

Understand cell matching to ensure battery packs deliver optimal performance, safety, and longevity by aligning capacity, voltage, and resistance.

[Get Price](#)

### Cell Matching

DIY battery configurations allow users to customize energy storage solutions by connecting lithium-ion batteries in series or parallel. Understanding how to safely connect these batteries is crucial for ...

[Get Price](#)



### Essential Guide to LiFePO4 Battery Matching: Key Criteria for ...

Learn how to match LiFePO4 battery cells for optimal performance, longevity, and safety. Key criteria include voltage, capacity, resistance, and temperature control.

[Get Price](#)



#### [The Ultimate Guide to Lithium-Ion Battery Storage Cabinets](#)

Discover the importance of lithium-ion battery storage cabinets for safe battery storage and charging. Learn best practices, key features, and how to choose the right battery ...

[Get Price](#)



#### [DIY Battery Configurations: Tips for Safely Connecting](#)

DIY battery configurations allow users to customize energy storage solutions by connecting lithium-ion batteries in series or parallel. Understanding how to safely connect ...

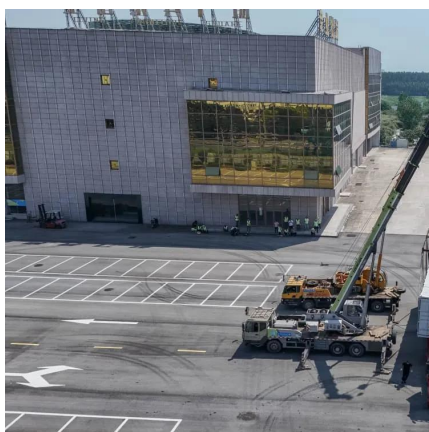
[Get Price](#)



#### [How to Install and Set Up a Battery Storage Cabinet at Home](#)

Understanding Battery Storage Cabinet Components and Benefits Key Components of a Battery Storage System A battery storage system is a sophisticated unit ...

[Get Price](#)



#### [Tips for Designing Battery Cabinets/Enclosures , SBS Battery](#)





Calculating Cabinet Height Chargers need room to breathe and batteries need extra room above for maintenance (watering and testing). To calculate the minimum height of ...

[Get Price](#)



[The Ultimate Guide to Lithium-Ion Battery ...](#)

Discover the importance of lithium-ion battery storage cabinets for safe battery storage and charging. Learn best practices, key features, and how to choose the right battery storage cabinet for your needs.

[Get Price](#)



[Understanding Cell Matching in Modern Battery Packs](#)

Understand cell matching to ensure battery packs deliver optimal performance, safety, and longevity by aligning capacity, voltage, and resistance.

[Get Price](#)



[Can batteries be stacked for storage?](#)

So, can batteries be stored stacked? Only when done professionally and safely within a system designed for it. A proper stackable battery box or rack is not just an accessory; it's a critical safety system ...

[Get Price](#)



[Can batteries be stacked for storage?](#)



So, can batteries be stored stacked? Only when done professionally and safely within a system designed for it. A proper stackable battery box or rack is not just an accessory; ...

[Get Price](#)



[Series, Parallel, and Series-Parallel ...](#)

To ensure optimal battery performance and longevity, it is essential to properly match batteries with similar characteristics, including capacity, voltage, and chemistry, when connecting them in series, parallel, or ...

[Get Price](#)



### **lithium ion**

When matching li-ion cells in a battery pack how do you use both the cell's resistance AND capacity? I've seen sources mentioning that each parallel group should have ...

[Get Price](#)



## **Contact Us**

For catalog requests, pricing, or partnerships, please visit:  
<https://germansolar.co.za>



## Scan QR Code for More Information



<https://germansolar.co.za>