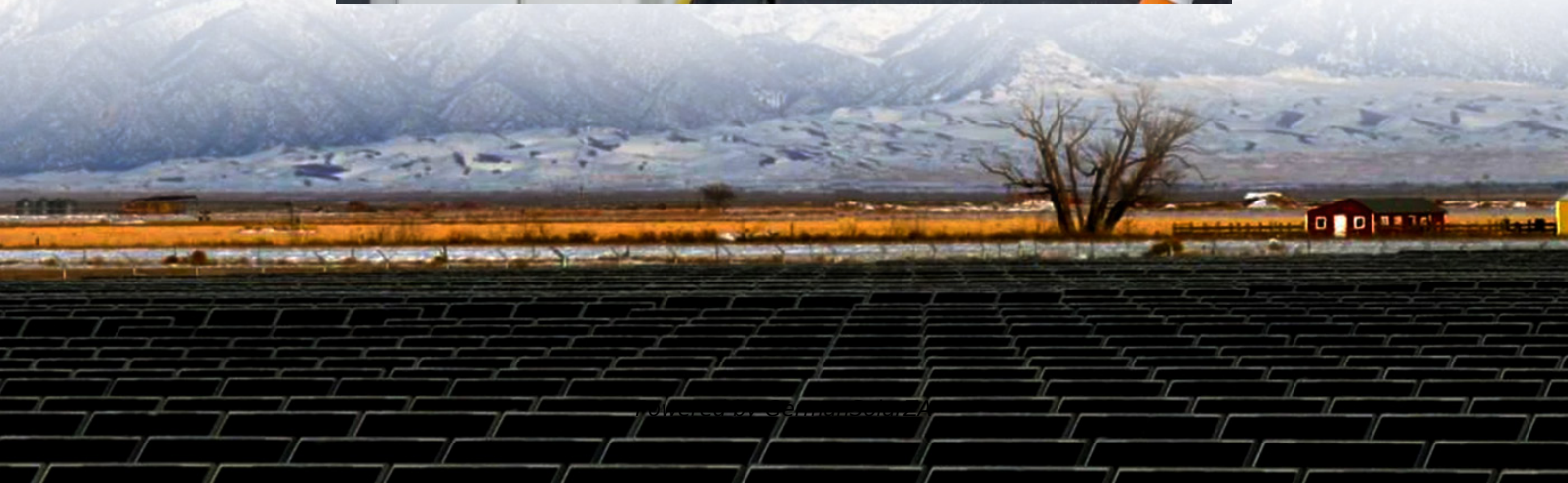
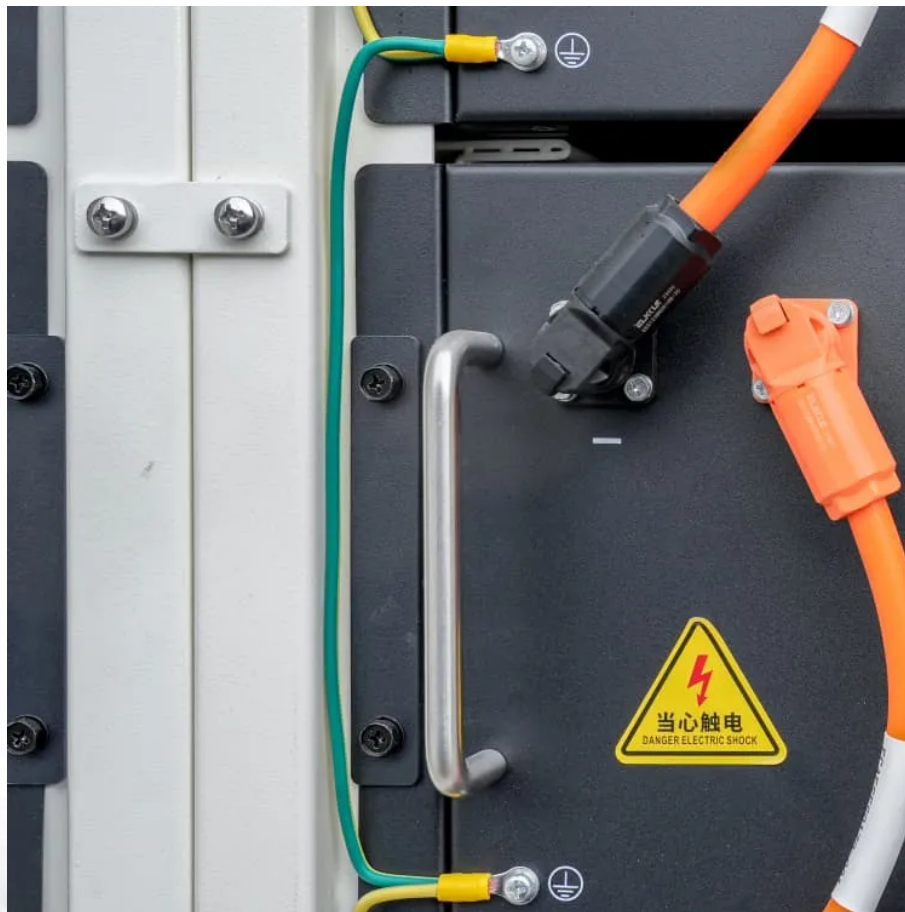


Land use policies for solar container communication station BESS





Overview

How much land is needed for a Bess project?

The size of the land required for a BESS project depends on the capacity of the battery system. Factors such as battery technology, energy density, and project scale will determine the necessary land area. Additionally, the site's topography, soil conditions, and accessibility should be assessed to ensure optimal project feasibility.

How land requirements affect Bess projects in 2024?

Land requirements are a significant factor in the development of BESS projects. Understanding the land needs, lease rates, and other related considerations is essential for project feasibility and profitability. So, let's explore all the details associated with BESS projects in 2024.

What considerations should be included in a Bess project?

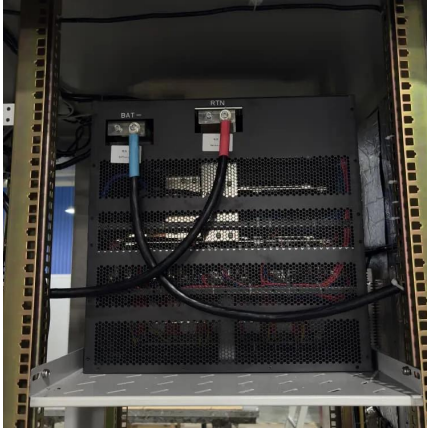
Similar to solar and wind farms, the development of a BESS project must take into consideration competing land uses and the terms of co-existence between the BESS, agricultural uses, mining activities and potentially native title rights. See our article discussing issues with competing land uses [here](#).

What zoning requirements do you need for a Bess project?

Environmental impact assessments and compliance with local zoning regulations need to be considered for any size of BESS project development. Landowners must ensure that the project adheres to environmental protection standards and obtains necessary permits and approvals. Consider the potential for dual-use or multi-use land applications.



Land use policies for solar container communication station BESS



CTUIL Proposes 3 Acre/100 MWh as Land Requirement for BESS ...

The land requirement will vary based on factors such as layout (land for battery container, power conversion system, and transformer), current technology, capacity, safety ...

[Get Price](#)

Battery Energy Storage Systems (BESS) Success in Siting, ...

Battery Energy Storage Systems (BESS) are being deployed at megawatt- to gigawatt-hour scales to help balance supply and demand, maximize renewable energy ...

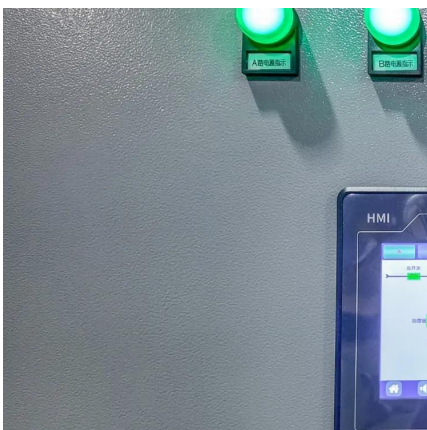
[Get Price](#)



Utility-Scale Battery Energy Storage Systems

About this Document This document is intended to provide guidance to local governments considering developing an ordinance or rules related to the development of utility ...

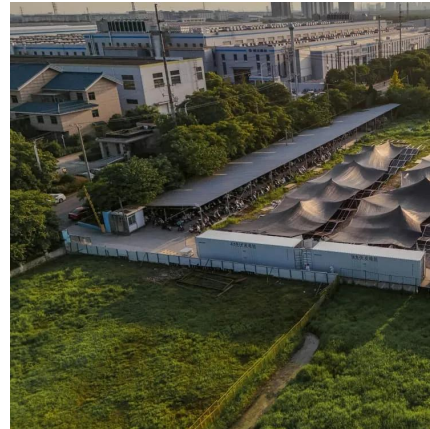
[Get Price](#)



CTUIL Proposes 3 Acre/100 MWh as Land ...

The land requirement will vary based on factors such as layout (land for battery container, power conversion system, and transformer), current technology, capacity, safety regulations, ...

[Get Price](#)



[Entitlements and Permitting Experts on BESS](#)

Entitlements and construction permitting can be the most challenging and time-consuming aspects of the design process for BESS facilities. In part two of our three-part series, our experts cover the ...

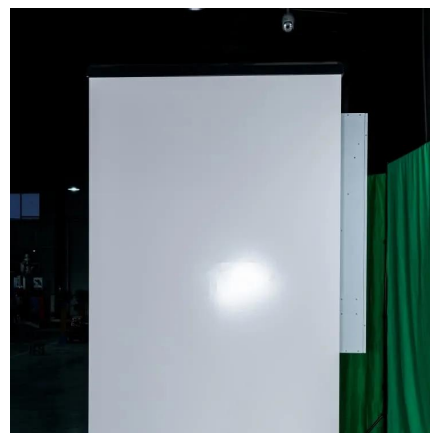
[Get Price](#)



[Battery Storage Land Lease Requirements & Rates 2024](#)

Curious about BESS land lease requirements? Discover key insights on site selection, lease terms, and incentives to enhance your BESS investments.

[Get Price](#)



[Entitlements and Permitting Experts on BESS , Kimley-Horn](#)

Entitlements and construction permitting can be the most challenging and time-consuming aspects of the design process for BESS facilities. In part two of our three-part ...

[Get Price](#)



[Energy storage power station land use standards](#)



The majority of BESS projects developed to date are located on private land - typically near substation infrastructure and/or generating facilities - and subject to the ...

[Get Price](#)



[Battery Storage Land Lease Requirements](#)

Curious about BESS land lease requirements? Discover key insights on site selection, lease terms, and incentives to enhance your BESS investments.

[Get Price](#)



BESS projects: land considerations

As Battery Energy Storage Systems continue to emerge as a key technology within Australia's clean energy transition, stakeholders must navigate crucial real estate issues (including land tenure, easements, and ...

[Get Price](#)



BESS projects: land considerations

As Battery Energy Storage Systems continue to emerge as a key technology within Australia's clean energy transition, stakeholders must navigate crucial real estate issues ...

[Get Price](#)



Energy Storage Rack Systems for Utility & Commercial



Solar ...

BESS Container OEM Specifications: Exact dimensions, weight (tare and gross operational), center of gravity, locations of lift points, forklift channels, and door swing clearances are critical ...

[Get Price](#)



[Battery Energy Storage Systems \(Zoning Practice March ...](#)

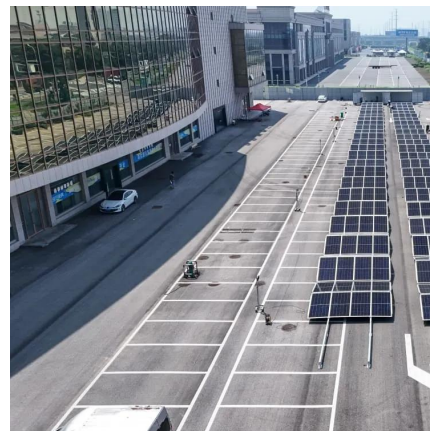
This issue of Zoning Practice explores how stationary battery storage fits into local land-use plans and zoning regulations. It briefly summarizes the market forces and land-use ...

[Get Price](#)

[Ground rules: land considerations shaping the future of](#)

A BESS' footprint is much smaller than a solar or wind farm. 2 For example, 1 MW of energy stored in a BESS typically requires around 50 square meters. 3 In comparison, for ...

[Get Price](#)



Contact Us

For catalog requests, pricing, or partnerships, please visit:
<https://germansolar.co.za>



Scan QR Code for More Information



<https://germansolar.co.za>