

LiFePO4 battery pack voltage drops suddenly





Overview

What's wrong with a LiFePO4 battery?

The core issue is the voltage range of a LiFePO4 cell (generally given as 2.5 to 3.65v), and that unlike lead-acid batteries, LiFePO4s don't self-balance. When/if the cells get imbalanced (particularly with deep cycling), it is very easy for one cell's voltage to go outside of the safe specification (i.e. 3605, 3599, 3598, 3942).

What is the charging voltage for LiFePO4?

The charging voltage for LiFePO4 batteries is 3.6-3.65v. A voltage of 3.6v indicates that the battery is 100% charged.

How much power does a LiFePO4 battery use?

The maximum static voltage of a LiFePO4 battery is 3.6v.

Is a LiFePO4 battery a drop in replacement?

The idea that a lifepo4 battery is a drop in replacement isn't absolutely correct. A lifepo4 battery can draw enough charge to hurt itself but more likely it will hurt your alternator first. The other important thing to consider is your bms is not intended to be used for charge termination.



LiFePO4 battery pack voltage drops suddenly



[9 Fast Fixes for LiFePO4 Battery Issues Off the Grid](#)

Fix your off-grid LiFePO4 battery now with these 9 easy troubleshooting steps. Resolve charging failures, voltage drops, and BMS errors to restore your power.

[Get Price](#)

[Zero or Low Voltage in LiFePO4 Batteries: Common Causes ...](#)

A guide to LiFePO4 battery zero/low voltage issues. Covers causes like BMS lockout, deep discharge, and faulty cells, plus troubleshooting steps.

[Get Price](#)



[Why do the Voltage of LiFePO4 Batteries Drop Back?](#)

Grepow Modular LiFePO4 Batteries What is the reason for the voltage drop in LFP batteries? 1 cause the load current is large, lithium iron phosphate battery discharge ...

[Get Price](#)



[LiFePO4 Battery Common Troubleshooting ...](#)

The battery management system (BMS) cuts off discharge if the voltage drops too low, preventing cell damage. Disconnect loads immediately and charge above 1A to recover.

[Get Price](#)



[LiFePO4 Troubleshooting: 5 Fixes for Lithium Battery Systems](#)

Use a voltage drop calculator during design. Keep a one-page sheet of limits for the pack, inverter, and breakers so field checks stay quick. Issue 3: Incorrect Charger or MPPT ...

[Get Price](#)



[Why do the Voltage of LiFePO4 Batteries Drop Back?](#)

Fix your off-grid LiFePO4 battery now with these 9 easy troubleshooting steps. Resolve charging failures, voltage drops, and BMS errors to restore your power.

[Get Price](#)



[Why LiFePO4 Battery Voltage Drops Back: Common Causes ...](#)

Learn why LiFePO4 battery voltage drops after charging. Explore common causes like aging, charger issues, storage conditions, and high load current, with practical solutions.

[Get Price](#)



Lifepo4 battery dropping voltage suddenly after



taking off ...

LiFePo4 has a nominal voltage of 12.8v The battery will be at around 13.5-14.6v when "charging" and will usually drop to around 13.0-13.2v for most of its SoC. So its entirely ...

[Get Price](#)



[LiFEPO4 sudden voltage drop on one cell](#)

Hi and thank you for an excellent forum! I have a 200 Ah LiFEPO4 battery with a built in jdb BMS (JBD-SP04S034-L4S-200A). The battery powers from a 170W solar cell ...

[Get Price](#)



What is the voltage drop of a LiFePO4 battery pack during ...

In conclusion, voltage drop in a LiFePO4 battery pack during discharge is a natural phenomenon caused by internal resistance, state of charge, and discharge rate. By ...

[Get Price](#)



[LiFePO4 Battery Common Troubleshooting and Solution](#)

The battery management system (BMS) cuts off discharge if the voltage drops too low, preventing cell damage. Disconnect loads immediately and charge above 1A to recover.

[Get Price](#)

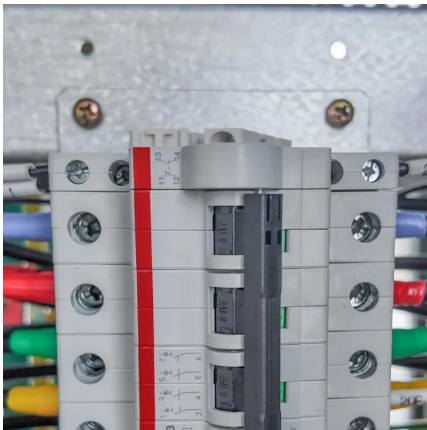


[What Causes LiFePO4 Battery Low Voltage and How to Fix It](#)



Low voltage in a LiFePO4 battery typically stems from deep discharges, high current draw, extreme temperatures, or aging cells. To fix it, first identify the root cause, then apply targeted ...

[Get Price](#)



[What is the voltage drop of a LiFePO4 battery ...](#)

In conclusion, voltage drop in a LiFePO4 battery pack during discharge is a natural phenomenon caused by internal resistance, state of charge, and discharge rate. By understanding these factors and taking ...

[Get Price](#)

Contact Us

For catalog requests, pricing, or partnerships, please visit:
<https://germansolar.co.za>

Scan QR Code for More Information



<https://germansolar.co.za>