

Motor circuit breaker factory in Auckland





Overview

What are nhp circuit breakers?

NHP's range of circuit breakers features a complete range of quality products for the protection of an electrical installation against overcurrent's and short circuits in industrial, commercial, and domestic applications.

What is a motor circuit breaker?

Circuit-breakers, coordinated with TeSys D contactors, to protect motors up to 115 A (55 kW / 400 V) A compact, robust and innovative motor circuit breakers line. Need help?

Quickly and easily find the right products and accessories for your applications.

What is a compact circuit breaker?

Circuit-breakers, to protect lines carrying up to 630 amps Leaned to 65 years of leadership, ComPacT circuit-breakers are now the ultimate reference everywhere around the world, when it comes to protection from electrical hazards.

What is a miniature circuit breaker?

NHP's Miniature Circuit Breakers offer a broad range of current ratings from 0.5A to 125A; typically in 6kA and 10kA fault levels for domestic light commercial applications to commercial, industrial and mining solutions. Accessories include auxiliaries, shunt trip, pin terminals, busbar comb and captive locks.



Motor circuit breaker factory in Auckland



Motor Circuit Breakers

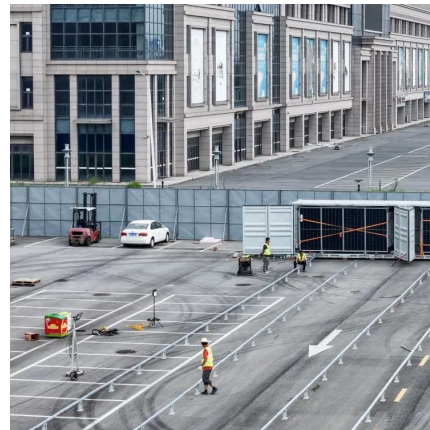
The manual motor starters protect the load and the installation against short-circuit and overload. They are three pole protection devices with thermal tripping elements for overload protection and electromagnetic tripping ...

[Get Price](#)

Circuit Breakers and Switches , Schneider Electric New Zealand

Explore circuit breakers, the foundation of safe power distributions and the main protection from electrically-caused fires. Protect each line carrying energy or supplying appliances by ...

[Get Price](#)



[Locations , About ABB in New Zealand , ABB](#)

Locations ABB's 5 locations in New Zealand include two manufacturing facilities located in Henderson, Auckland and Napier; in addition a service centre in Mt Wellington, Auckland, ...

[Get Price](#)



Circuit Protection

Circuit Protection NHP offers a broad range of circuit protection products to suit a variety of industries and applications including circuit breakers and earth leakage protection relays. NHP's range of circuit breakers features ...



[Get Price](#)



[Circuit Breakers -- Scott Electrical](#)

Scott Electrical is your local electrical supplies store with an extensive range of products for sale in Auckland and across NZ.

[Get Price](#)



Circuit Protection

Circuit Protection NHP offers a broad range of circuit protection products to suit a variety of industries and applications including circuit breakers and earth leakage protection relays. ...

[Get Price](#)



Auckland Electric Circuit Breakers Suppliers and Manufacturers

Get latest factory price for Electric Circuit Breakers. Request quotations and connect with Auckland manufacturers and B2B suppliers of Electric Circuit Breakers.

[Get Price](#)



Motor protection circuit-breakers , Schneider Electric



New Zealand

Circuit-breakers, coordinated with TeSys D contactors, to protect motors up to 32 A (15 kW / 400 V) TeSys GV2 motor circuit breaker provides manual isolation, manual motor control and short ...

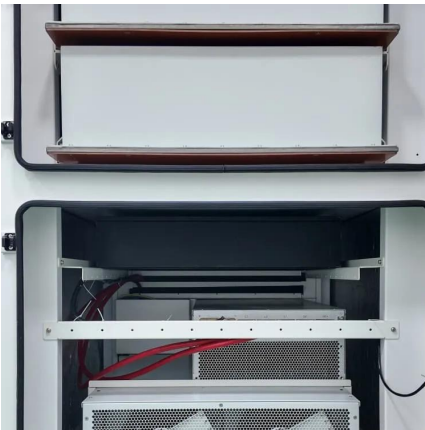
[Get Price](#)



[Circuit Breakers Suppliers](#) , [Circuit Breakers Manufacturers](#)

Zhejiang Sentai Electrical Apparatus Factory, established in 1997, is a leading manufacturer & exporter of low voltage electrical apparatus in China, our main products are Circuit Breaker, ...

[Get Price](#)



[Circuit Breakers and Switches](#) , [Schneider](#) ...

Explore circuit breakers, the foundation of safe power distributions and the main protection from electrically-caused fires. Protect each line carrying energy or supplying appliances by choosing the correct sized circuit ...

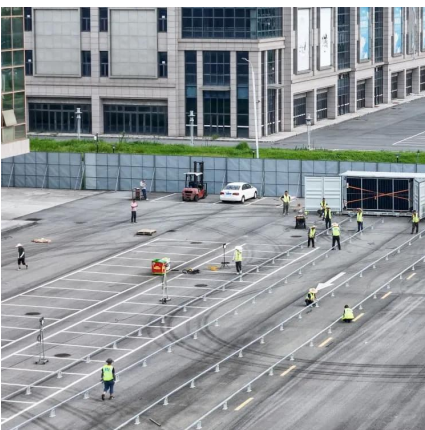
[Get Price](#)



[Bussmann by Eaton](#) , [New Zealand Insulators](#)

NZI acts as a distributor for Bussman by Eaton in New Zealand, and stocks a vast array of Bussman HRC fuselinks - BS88 Industrial, Motor Circuit, DIN Blade, Solid Links, ...

[Get Price](#)



Motor Circuit Breakers



Motor Circuit Breakers SGV2 Series Modular Motor Circuit Breakers & Accessories Up to 32 Amps 15kW AC-3 IEC 60947-2 / IEC 60947-4-1 Accessories include Auxiliary ...

[Get Price](#)



[Locations](#) , [About ABB in New Zealand](#) , [ABB](#)

Locations ABB's 5 locations in New Zealand include two manufacturing facilities located in Henderson, Auckland and Napier; in addition a service centre in Mt Wellington, Auckland, servicing all systems and products.

[Get Price](#)



Motor Circuit Breakers

The manual motor starters protect the load and the installation against short-circuit and overload. They are three pole protection devices with thermal tripping elements for overload protection ...

[Get Price](#)



Contact Us

For catalog requests, pricing, or partnerships, please visit:
<https://germansolar.co.za>



Scan QR Code for More Information



<https://germansolar.co.za>