

# Nighttime emergency outdoor solar lights





## Nighttime emergency outdoor solar lights

---



[in/at the daytime. in/at the night \(time\). WordReference ...](#)

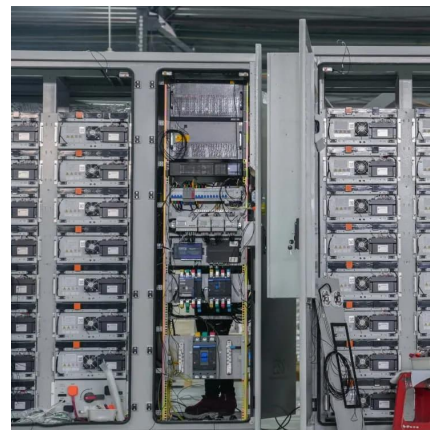
Hello, Benckuo, and welcome to the forum. If we use "in the daytime", it may mean a specific daytime, but usually an unspecific daytime. E.g. These flowers open in the daytime. ...

[Get Price](#)

### In day vs at night?

I always have this question in my mind. If someone asks, what are the weather conditions there? other answers, It's hot in day and cool at night. My question is why at night ...

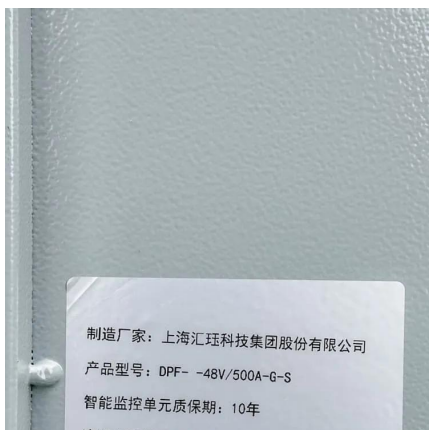
[Get Price](#)



[Can we use "day and night time" instead of "day and night"?](#)

There is no rule that I know of that forbids this usage, but I would strongly advise using the one-word spelling variant: "nighttime" Finally, the Ngram chart below shows the ...

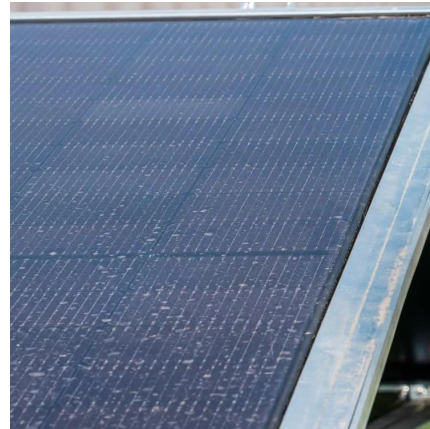
[Get Price](#)



### nouns

Compound words such as nighttime used to be quite common in English; unfortunately, many people in modern times are forgetting about them, so their use is in decline.

[Get Price](#)



### At night/ at the night

At night = at nighttime - nighttime in this sense is uncountable. At night; by train; through time; with confidence; etc., etc. are prepositional phrases in which the object of the ...

[Get Price](#)



### Another word for night that means the period from sunset ...

I'm looking for a synonym to night, that doesn't include night in it (nighttime), that indicates the period from sunset to sunrise. Since evening is the period from sunset to bedtime ...

[Get Price](#)



### First Lover in the Nighttime? a little bit of bacon?

"First Lover in the nighttime" is a coarse reference to the courtesy title normally awarded to spouses of higher government dignitaries. Some users are suggesting that ...

[Get Price](#)





## At Night or In the Night?

Why do we refer to morning, afternoon and evening as 'in the morning', 'in the afternoon', 'in the evening' but not 'in the night' instead we say 'at night.'

[Get Price](#)



## word usage

Morning ends and Evening begins after the sun reaches the zennith, its highest point in the sky, regardless of the time of day. Nighttime begins after the sun has set, and also ...

[Get Price](#)

## Nighttime vs nocturnal

'Nighttime' or 'night-time' is generally a noun: crickets come out / are active in the night-time. It can be used before other nouns, but is less common that way than 'nocturnal', ...

[Get Price](#)



## Contact Us

---

For catalog requests, pricing, or partnerships, please visit:  
<https://germansolar.co.za>



## Scan QR Code for More Information



<https://germansolar.co.za>