

# North-South orientation angle of roof solar panels





## Overview

---

What is solar panel orientation & angle?

This makes the orientation and angle of solar panels important in maximizing the solar output. Solar panel orientation refers to the cardinal direction the panel is facing: north, south, east or west. To be more specific, the orientation refers to the horizontal direction of solar panels in relation to the equator.

What is solar panel orientation?

Solar panel orientation refers to the compass direction that solar panels face when installed. This positioning determines which cardinal direction – north, south, east, or west – the panel surface points toward during operation. The orientation choice directly affects how much direct sunlight panels receive throughout the day.

Which direction should solar panels be angled?

Southern Hemisphere installations require north-facing orientation for maximum solar exposure. The sun's path runs through the northern sky, making this direction optimal for energy capture. Tilt angles follow the same latitude-based formula as northern regions. A location at 30° south latitude performs best with panels angled at 30°.

Why do solar panels face and tilt angle work together?

The direction panels face and their tilt angle work together to maximize energy production from available sunlight. Solar panel orientation refers to the compass direction that solar panels face when installed. This positioning determines which cardinal direction – north, south, east, or west – the panel surface points toward during operation.



## North-South orientation angle of roof solar panels

---



### [What's the Best Angle for Solar Panels? \\_ EnergySage](#)

Learn how the orientation and angle of your solar panels can affect just how much electricity they'll produce for you.

[Get Price](#)

### [Solar Panel Orientation: Everything You Need to Know](#)

Solar panel orientation refers to the placement, direction, and angle of solar panels, specifying the cardinal direction the panel faces, which helps it receive direct sunlight ...

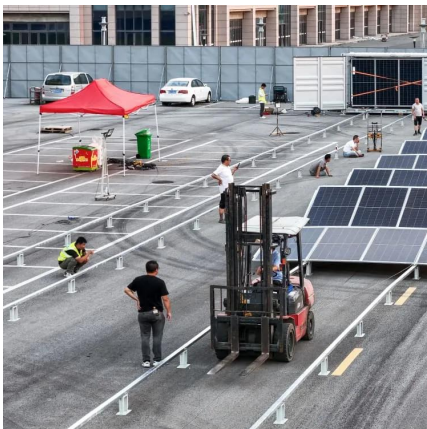
[Get Price](#)



### [Best Solar Panel Orientation for Maximum ...](#)

Understanding the best solar panel orientation is essential to maximizing the efficiency and output of your solar power system. Whether you're installing a solar panel for home use or a commercial project, the ...

[Get Price](#)



### [Can Solar Panels Face North and Still Work?](#)

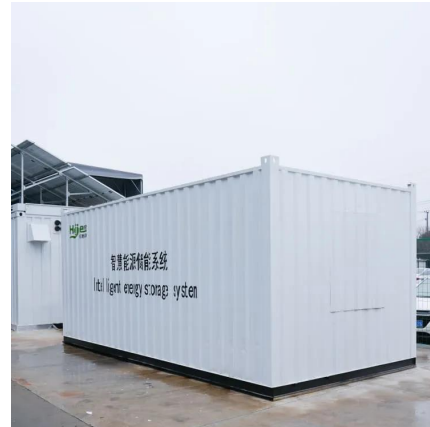
We analyze the technical viability and efficiency trade-offs of installing solar panels on a North-facing roof plane.



## [How to Find the Best Orientation and Angle of Solar Panels?](#)

Putting solar panels at the optimal angle and to the best orientation is essential to obtain the maximum energy in a solar power system. To maximize the energy conversion efficiency, use ...

[Get Price](#)



## [Solar Panel Direction & Orientation: 2025](#)

...

Discover the optimal direction and angle for solar panels to maximize energy output. Complete guide with calculations, tools, and location-specific recommendations for 2025.

[Get Price](#)



## **Optimizing Roof Angle And Orientation For Solar Installation**

Why Orientation Matters for Solar Installations  
Orientation refers to the direction your roof faces and can drastically impact how much sunlight your solar panels receive daily. ...

[Get Price](#)





## [Optimizing Roof Angle And Orientation For ...](#)

Why Orientation Matters for Solar Installations  
Orientation refers to the direction your roof faces and can drastically impact how much sunlight your solar panels receive daily. In the northern hemisphere, ...

[Get Price](#)



## [Best Direction for Solar Panels to Maximize Savings -- ...](#)

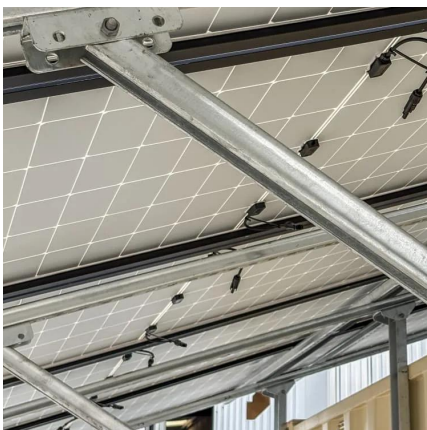
A north-facing roof is the worst direction for solar, as panels will produce around 30% less energy than if they face south. The best angle for solar panels to be installed around 30 degrees, but ...

[Get Price](#)

## [Solar Panel Direction & Orientation: 2025 Complete Guide](#)

Discover the optimal direction and angle for solar panels to maximize energy output. Complete guide with calculations, tools, and location-specific recommendations for 2025.

[Get Price](#)



## [What's the Best Angle for Solar Panels?](#)

Learn how the orientation and angle of your solar panels can affect just how much electricity they'll produce for you.

[Get Price](#)



## What is the best angle and orientation for solar panels?

Discover how to choose the right angle for your solar panels based on your location and seasonal variations. Proper orientation and tilt ensure maximum sunlight absorption, ...

[Get Price](#)



## What is the best angle and orientation for ...

Discover how to choose the right angle for your solar panels based on your location and seasonal variations. Proper orientation and tilt ensure maximum sunlight absorption, enhancing the efficiency of your ...

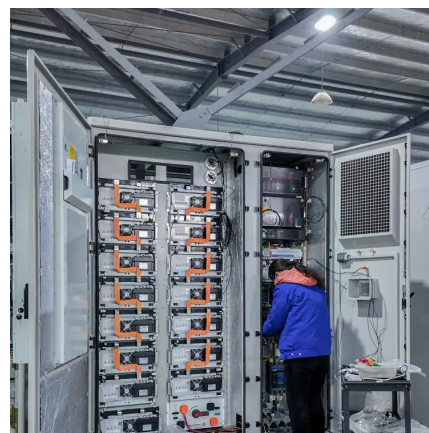
[Get Price](#)



## Best Direction for Solar Panels to Maximize ...

A north-facing roof is the worst direction for solar, as panels will produce around 30% less energy than if they face south. The best angle for solar panels to be installed around 30 degrees, but it ultimately depends on ...

[Get Price](#)



## Solar Panel Orientation: Find the Best Angle and Direction

Solar panel orientation refers to the compass direction that solar panels face when installed. This positioning determines which cardinal direction - north, south, east, or west - ...

[Get Price](#)



## Best Solar Panel Orientation for Maximum Output

Understanding the best solar panel orientation is essential to maximizing the efficiency and output of your solar power system. Whether you're installing a solar panel for ...

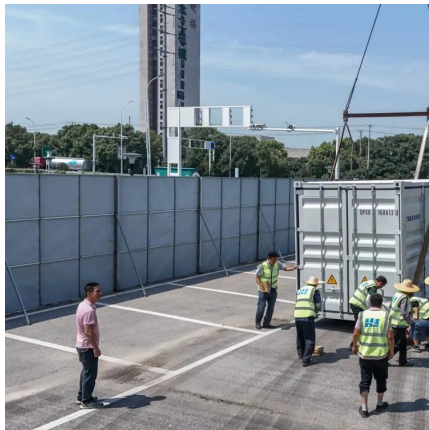
[Get Price](#)



## How to Find the Best Orientation and Angle ...

Putting solar panels at the optimal angle and to the best orientation is essential to obtain the maximum energy in a solar power system. To maximize the energy conversion efficiency, use proper mount brackets, ...

[Get Price](#)



## Solar Panel Orientation: Find the Best Angle ...

Solar panel orientation refers to the compass direction that solar panels face when installed. This positioning determines which cardinal direction - north, south, east, or west - the panel surface points toward ...

[Get Price](#)



## Contact Us

For catalog requests, pricing, or partnerships, please visit:  
<https://germansolar.co.za>



## Scan QR Code for More Information



<https://germansolar.co.za>