

Signal base station communication principle





Overview

What is a signal transmission & reception base station?

Signal Transmission and Reception Base stations use antennas mounted on cell towers to send and receive radio signals to and from mobile devices within their coverage area. This communication enables users to make voice calls, send texts, and access data services, connecting them to the wider world.

Why are base stations important?

Base stations are the backbone of wireless communication networks, playing a pivotal role in signal transmission, network reliability, and high-speed data connectivity. As technology evolves, the importance of base stations will continue to grow, addressing new challenges and supporting the ever-expanding demand for wireless communication services.

How do base stations work?

Base stations use antennas mounted on cell towers to send and receive radio signals to and from mobile devices within their coverage area. This communication enables users to make voice calls, send texts, and access data services, connecting them to the wider world. Network Management and Optimization.

Why are base stations important in cellular communication?

Base stations are important in the cellular communication as it facilitate seamless communication between mobile devices and the network communication. The demand for efficient data transmission are increased as we are advancing towards new technologies such as 5G and other data intensive applications.



Signal base station communication principle



[Exploring communication base stations](#)

The specific working principles of different types of base stations, such as 2G, 3G, 4G, and 5G base stations, may vary depending on the communication technology standards ...

[Get Price](#)

[How do communication base stations work](#)

Communication base stations, or cell towers, are vital for wireless networks. They consist of antennas, transceivers, controllers, and power supplies to transmit and receive signals.

[Get Price](#)



[How Cellular Base Station Antenna Works](#)

Cellular base station antennas are the backbone of wireless communication. They enable the transmission and reception of signals that connect our smartphones, IoT devices, ...

[Get Price](#)



[Base Stations and Cell Towers: The Pillars of Mobile ...](#)

Key Functions of Base Stations and Cell Towers
Signal Transmission and Reception Base stations use antennas mounted on cell towers to send and receive radio ...



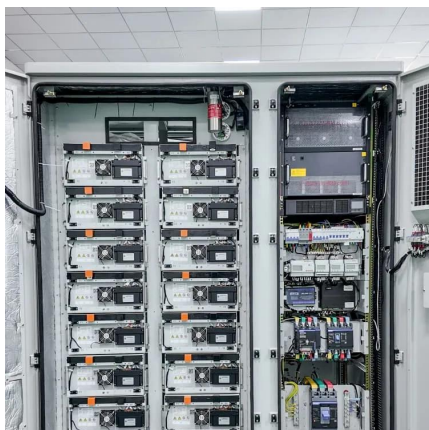
[Get Price](#)



Base Stations

The present-day tele-space is incomplete without the base stations as these constitute an important part of the modern-day scheme of wireless communications. They are referred to as cell towers or cellular ...

[Get Price](#)



What Is A Base Station?

A base station is an integral component of wireless communication networks, serving as a central point that manages the transmission and reception of signals between ...

[Get Price](#)



[Understanding Base Stations in Mobile Communication](#)

In summary, base stations play a multifaceted role in mobile communication by ensuring effective signal transmission and reception, executing seamless handoff procedures, ...

[Get Price](#)



[How do communication base stations work](#)

Communication base stations, or cell towers, are vital for wireless networks. They consist of antennas, transceivers, controllers, and power supplies to transmit and receive signals.

[Get Price](#)



[Exploring communication base stations](#)

The specific working principles of different types of base stations, such as 2G, 3G, 4G, and 5G base stations, may vary depending on the communication technology standards used, but overall they all ...

[Get Price](#)

Base Stations

The present-day tele-space is incomplete without the base stations as these constitute an important part of the modern-day scheme of wireless communications. They are ...

[Get Price](#)



Understanding Base Stations: The Backbone of Wireless Communication

In today's digital age, reliable and high-speed communication is more essential than ever. Whether it's for mobile phones, internet services, or IoT (Internet of Things) devices, ...

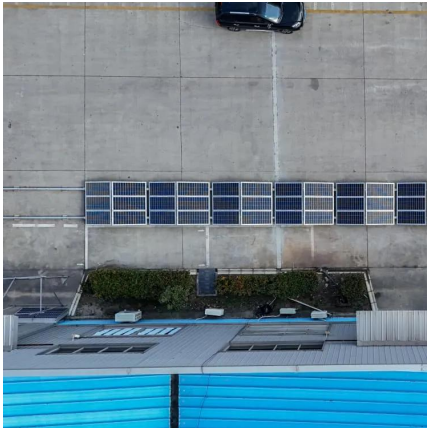
[Get Price](#)



[What is a Base Station? -- From Communication Core to ...](#)

Base stations are the core of mobile communication, and with the rise of 5G, thermal and energy challenges are increasing. This article explains the definition, structure, ...

[Get Price](#)



What Is the Role of a Base Station in Wireless Communication?

Base stations are the backbone of wireless communication networks, playing a pivotal role in signal transmission, network reliability, and high-speed data connectivity. As ...

[Get Price](#)

Contact Us

For catalog requests, pricing, or partnerships, please visit:
<https://germansolar.co.za>

Scan QR Code for More Information



<https://germansolar.co.za>