

Solar container communication station battery parallel connection method





Overview

How to connect lithium solar batteries in parallel?

Connecting Lithium Solar Batteries in Parallel: When connecting batteries in parallel, the positive terminals are connected together, and the negative terminals are connected together. The ampere-hour capacity of the individual batteries adds up, while the total voltage remains the same as the individual batteries.

How to connect lithium solar batteries in series?

Connecting Lithium Solar Batteries in Series: To connect lithium solar batteries in series, you simply link the negative pole of one battery to the positive pole of the next battery. This ensures that the same current flows through all the batteries. The total voltage of the series connection is the sum of the individual voltages.

How do I connect different battery types to my solar system?

Understanding how to connect different battery types enhances your solar system's efficiency. Two primary methods exist for connecting batteries: series and parallel. Each connection method offers unique benefits, so knowing how to implement them is essential for a successful setup.

How do you connect a battery to a solar panel?

Connect all positive terminals together. Connect all negative terminals together. Ensure batteries are matched for type and capacity. Parallel connections work well when you need more storage capacity without raising the voltage. This method allows for greater flexibility, especially in larger solar setups.



Solar container communication station battery parallel connection r



[Lithium Solar Batteries Series vs Parallel Connection](#)

Lithium solar batteries are essential components of solar energy systems, providing reliable energy storage for various applications. Understanding how to connect these ...

[Get Price](#)

[How to Connect Two or More Batteries in Series and Parallel](#)

What are the battery types used in solar applications and how to make a series and parallel connection to increase the voltage and current of our energy storage system.

[Get Price](#)



[Batteries in Series vs Parallel: Understand The Differences](#)

Batteries in series vs parallel--it's a topic that confuses many DIY enthusiasts and even some professionals. Of course, this is one of the questions the BSLBATT team is often ...

[Get Price](#)



[Parallel Connection of Batteries in DIY Solar ...](#)

Conclusion Parallel connection of batteries in a DIY solar power system is a practical way to expand energy storage capacity. By following key guidelines--matching battery chemistry, cell count, and ...



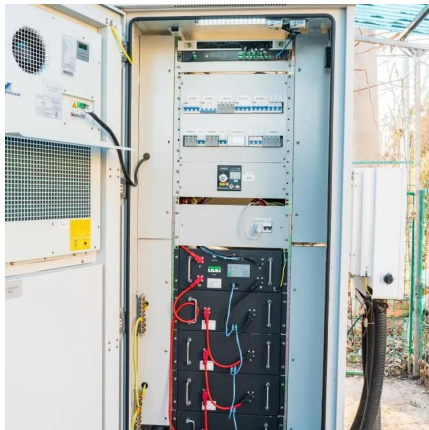
[Get Price](#)



How to Connect Multiple Batteries for Solar: A Step-by-Step ...

Discover how to efficiently connect multiple batteries for your solar power system in this comprehensive guide. Learn the benefits of different battery types, including lead-acid and ...

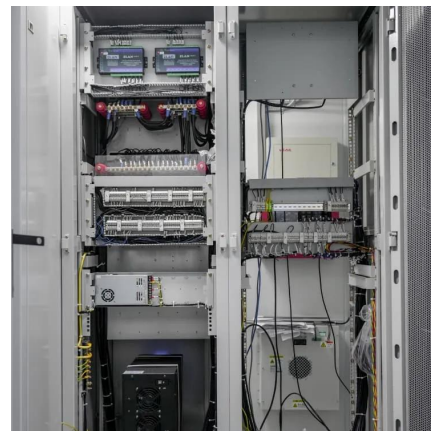
[Get Price](#)



Parallel Connection of Batteries in DIY Solar Power Systems: ...

Conclusion Parallel connection of batteries in a DIY solar power system is a practical way to expand energy storage capacity. By following key guidelines--matching ...

[Get Price](#)



[Lithium Solar Batteries Series vs Parallel ...](#)

Lithium solar batteries are essential components of solar energy systems, providing reliable energy storage for various applications. Understanding how to connect these batteries in series or parallel is ...

[Get Price](#)





Battery Parallel Connection (Single-Phase Hybrid)

Battery Parallel Connection (Single-Phase Hybrid)
Disclaimer The material in this document has been prepared by Sungrow Australia Group Pty. Ltd. ABN 76 168 258 679 and ...

[Get Price](#)



Parallel Connection of 12V Solar Batteries

Overall, parallel connection of 12V solar batteries is a practical solution for enhancing the energy - storage capabilities of a solar power system when done correctly.

[Get Price](#)

eriyabv

A large-capacity energy storage unit is formed in parallel, which not only increases the probability of lithium battery failure, but also increases the fire spread channel because the battery cannot ...

[Get Price](#)



Energy storage power station battery series and parallel ...

Why is series and parallel battery connection important? When designing an efficient energy storage system, the configuration of batteries in series and parallel plays a crucial role. Both ...

[Get Price](#)



CONNECTING BATTERIES IN PARALLEL TO EXTEND RUNTIME

The global solar storage container market is experiencing explosive growth, with demand increasing by over 200% in the past two years. Pre-fabricated containerized solutions now ...

[Get Price](#)



Contact Us

For catalog requests, pricing, or partnerships, please visit:
<https://germansolar.co.za>

Scan QR Code for More Information



<https://germansolar.co.za>