

Solar container lithium battery pack voltage is too low





Overview

What voltage is too low for a lithium battery?

What voltage is too low for lithium battery?

The critical low-voltage threshold for lithium-ion batteries is 2.5V per cell, below which irreversible damage occurs due to copper dissolution and SEI layer breakdown.

Should lithium batteries be stored at 0% SoC?

Pro Tip: Never store lithium batteries at 0% SOC—maintain 40–60% (3.7–3.8V/cell) for long-term storage stability. Beyond voltage thresholds, lithium-ion cells experience structural collapse when over-discharged.

Should lithium batteries be maintained above 3v/cell?

Maintaining lithium batteries above 3.0V/cell is non-negotiable for safety and longevity. Modern BMS designs with redundant voltage sensors and adaptive cutoff algorithms are crucial—especially in multi-cell packs where voltage sag under load can mask true SOC.

Can a 12V lithium battery drop below 9V?

A: A 12V lithium (3S) battery should never drop below 9V. Normal operating range: 10V–12.6V. Q: Does freezing lithium batteries recover voltage?

A: No—low temperatures temporarily increase internal resistance, causing voltage sag. Storage below 0°C accelerates permanent capacity loss. Q: What voltage indicates a dead lithium battery?



Solar container lithium battery pack voltage is too low



Is a Solar Panel System Right for You? , Ecohouse Solar, LLC

Thinking about getting a solar panel system for your home or business? Learn the 12 top considerations to ensure you get the most out of your investment.

[Get Price](#)

Comprehensive Guide to Lithium Battery Cell Voltage During ...

Understand lithium battery cell voltage during charging and discharging, including safe ranges, cutoff limits, and how voltage impacts performance and safety.

[Get Price](#)



Comprehensive Guide to Lithium Battery Cell Voltage During Charging and

Understand lithium battery cell voltage during charging and discharging, including safe ranges, cutoff limits, and how voltage impacts performance and safety.

[Get Price](#)



[Lithium Battery Troubleshooting: Fix Charging ...](#)

Discover effective Lithium Battery Troubleshooting. Learn how to fix charging issues, low voltage errors, and BMS faults. Trusted tips from Muller Energy NSW.

[Get Price](#)



[Battery voltage is too low and I have no way to charge](#)

I decided to assemble the battery and with that my whole system, knowing that the battery would be running without a BMS, and I would have to be careful. Now today when I ...

[Get Price](#)



[What to do if the lithium battery voltage is ...](#)

In the automotive field, lithium batteries are one of the important power sources, and the stability of their voltage is crucial. When encountering the situation of low voltage of lithium batteries, we need to understand the ...

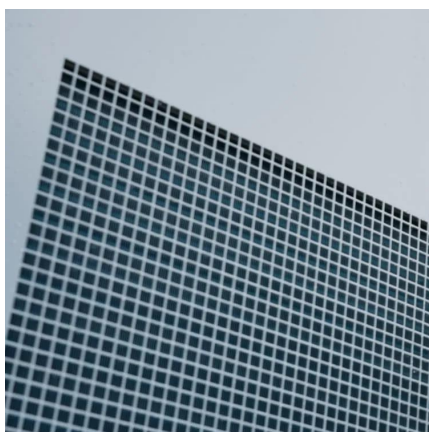
[Get Price](#)



[The Federal Solar Tax Credit Has Been Extended Through ...](#)

The federal solar tax credit has been extended through 2032. Learn more about who can get the tax credit, how long it lasts, and more.

[Get Price](#)



[Lithium Battery Troubleshooting: Fix Charging & Common ...](#)



Discover effective Lithium Battery Troubleshooting. Learn how to fix charging issues, low voltage errors, and BMS faults. Trusted tips from Muller Energy NSW.

[Get Price](#)



[What voltage is too low for lithium battery?](#)

The critical low-voltage threshold for lithium-ion batteries is 2.5V per cell, below which irreversible damage occurs due to copper dissolution and SEI layer breakdown. Discharging below ...

[Get Price](#)



Solar Permitting & Interconnection Process , Ecohouse Solar, ...

Trying to navigate the solar permitting process and connect your system to the grid? Get details on how solar permitting and interconnection work.

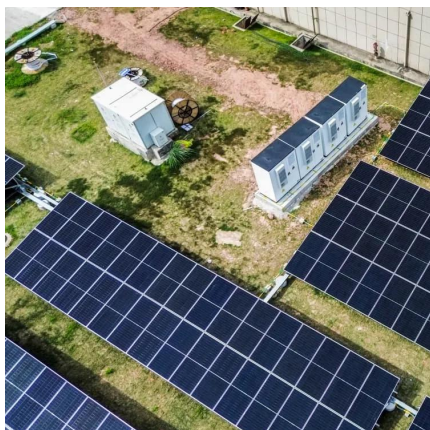
[Get Price](#)



[What Voltage is Too Low for a Lithium Battery?](#)

What voltage is too low for a lithium battery? Most lithium batteries risk permanent damage below 2.5V per cell. For a standard 3.7V lithium-ion cell, voltages under 3.0V indicate ...

[Get Price](#)



Common problems and troubleshooting for Low



Voltage Lithium Battery Packs

In recent years, the low voltage lithium battery pack has gained significant traction in various industries due to its efficiency and versatility. This innovative power source has emerged as a ...

[Get Price](#)



[Top Guide to Voltage Consistency in Lithium Solar Batteries](#)

Solar lithium battery voltage consistency refers to the same batch or the same system of individual monomer lithium iron phosphate batteries work under the same ...

[Get Price](#)



[Residential Solar Panel Installation in Columbus, Ohio](#)

Ecohouse Solar offers top residential solar solutions in Columbus, Ohio. Save on energy costs and reduce your carbon footprint. Free consultations available!

[Get Price](#)



[LiFePO4 Voltage Charts \(1 Cell, 12V, 24V, 48V\)](#)

Explore the LiFePO4 voltage chart to understand the state of charge for 1 cell, 12V, 24V, and 48V batteries, as well as 3.2V LiFePO4 cells.

[Get Price](#)



[LiFePO4 Voltage Charts \(1 Cell, 12V, 24V, 48V\) ...](#)



Explore the LiFePO4 voltage chart to understand the state of charge for 1 cell, 12V, 24V, and 48V batteries, as well as 3.2V LiFePO4 cells.

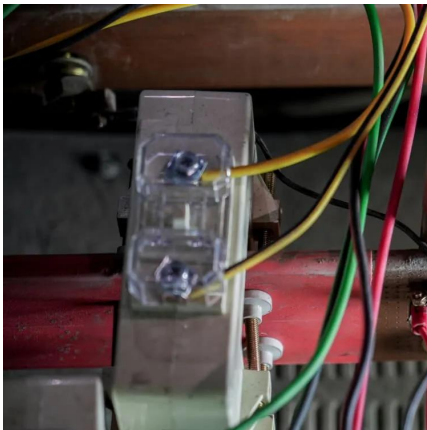
[Get Price](#)



Solar Plans , Ecohouse Solar, LLC

Flexible Payment Options That Fit Any Budget
Going solar is a long-term decision that requires careful planning. With so many choices, it can be hard to know which is right for you. Offering ...

[Get Price](#)



[Navigating AEP Ohio's Rate Increase , Ecohouse Solar, LLC](#)

Discover how AEP Ohio's rate increase impacts energy bills and explore solutions with Ecohouse Solar to reduce costs and boost energy efficiency.

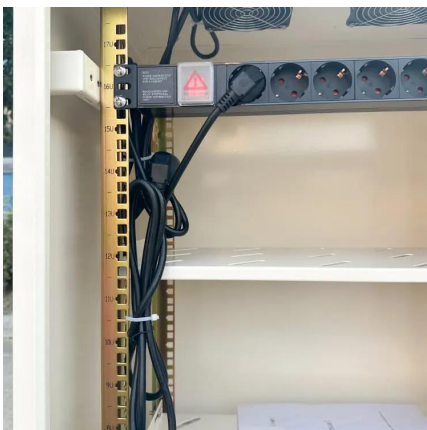
[Get Price](#)



[Common problems and troubleshooting for ...](#)

In recent years, the low voltage lithium battery pack has gained significant traction in various industries due to its efficiency and versatility. This innovative power source has emerged as a solution for numerous ...

[Get Price](#)



Why Your Lithium Battery Goes Into Low Voltage



Disconnect ...

Lithium batteries are reliable and long-lasting, but if your battery suddenly stops powering your gear or won't charge, it may have gone into Low Voltage Disconnect (LVD). ...

[Get Price](#)



[New Solar Technology , Ecohouse Solar, LLC](#)

Ecohouse Solar is ready to install these products for our customers. Our technicians are trained and are familiar with the new solar inverter technology that is coming on the market. Our goal ...

[Get Price](#)



[Ecohouse Solar: Solar Installation Company in Columbus, Ohio](#)

A solar panel system increases your property's value while lowering energy costs. With flexible financing options and our new leasing program, installing solar in Ohio is more affordable than ...

[Get Price](#)



What to do if the lithium battery voltage is low? What is the ...

In the automotive field, lithium batteries are one of the important power sources, and the stability of their voltage is crucial. When encountering the situation of low voltage of lithium batteries, ...

[Get Price](#)





Contact Us

For catalog requests, pricing, or partnerships, please visit:
<https://germansolar.co.za>

Scan QR Code for More Information



<https://germansolar.co.za>