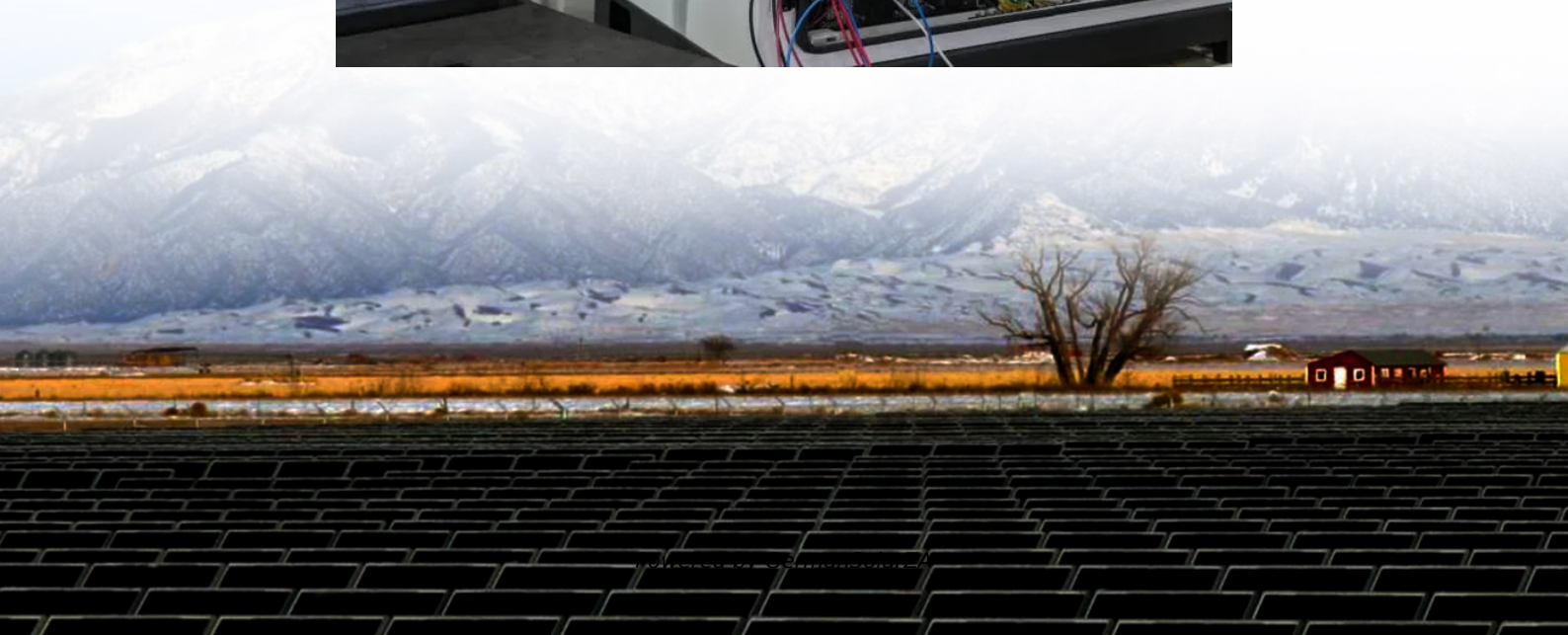


The role of double-glass components





Overview

How does double glazing work?

Double glazing consists of two panes of glass separated by a spacer bar. The space between the panes is filled with an insulating gas, such as argon or krypton. This sealed unit is designed to reduce heat transfer and improve thermal insulation. Thermal Insulation Air or Gas Gap: The gap between the two panes of glass acts as an insulator.

What are double glazed units?

To kick things off, let's start by demystifying what double glazed units are. These units, often referred to as double glazing or insulated glass units (IGUs), consist of two glass panes separated by a spacer, typically filled with argon or krypton gas. We'll delve into how these components work together to provide an array of benefits.

What is a double glazed window?

The window's key component is the insulated glass unit (IGU) or double glazed sealed unit, which sits in a frame of timber, aluminium, or uPVC. The IGU consists of two glass sheets separated by a spacer bar to form an air gap filled with an insulating gas like Xenon, Krypton, or Argon gas.

What are the benefits of double glazed units?

Energy Efficiency: The role of double glazed units in reducing energy consumption and lowering heating and cooling costs. Noise Reduction: How the dual panes of glass and gas fillings create a barrier against external noise, providing a quieter indoor environment.



The role of double-glass components



[Double Glass Component Upper and Lower Glass Offset](#)

Understanding the Role of Double Glass Components in Today's Industry In the world of architectural design and energy-efficient systems, double glass component upper and lower ...

[Get Price](#)

[What Is Double Glazing? Benefits Explained](#)

Double glazing consists of two panes of glass that insulates against heat transfer between varying temperatures that increases thermal efficiency.

[Get Price](#)



[Guide to Double Glazed Units , Prentice Glass ...](#)

To kick things off, let's start by demystifying what double glazed units are. These units, often referred to as double glazing or insulated glass units (IGUs), consist of two glass panes separated by a spacer, ...

[Get Price](#)

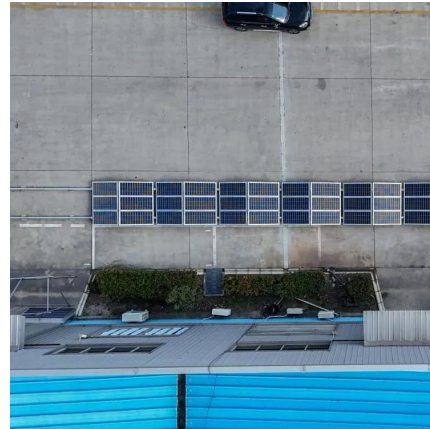
[Double Glazed Windows: Components and ...](#)

Double glazed windows have become increasingly popular in recent years due to their energy-efficient properties and ability to enhance the comfort and aesthetics of homes and



buildings. These windows consist of ...

[Get Price](#)



[What Is Double Glazing? Benefits Explained](#)

What Is Double Glazing
How to Fix Condensation in Double Glazing
What Is The Best Glass For Double Glazing
The Benefits of Double Glazed Windows
The best energy-efficient glass to use for double glazing is the low emissivity (Low-E) glass. Low emissivity (Low-E) glass usually contains an invisible metal oxide coating, typically on one of the interior glass panes - next to the gap. It allows heat and sunlight in but stops the amount of heat allowed to get out again. See more on fensterglazing
maclarenwindows

The Science Behind Double Glazing: How It ...

Double glazing is a popular choice for homeowners seeking to improve insulation and energy efficiency. But how exactly does double glazing work? This article delves into the science behind double glazing, explaining the ...

[Get Price](#)

[The Role of Double Glazed Windows in ...](#)

In this article, readers will learn about the importance and benefits of double glazing in reducing greenhouse gas emissions and achieving energy efficiency. The article will explore the components and ...

[Get Price](#)



How Do Double Glazed Windows Work?

The Basics of Double Glazing Double glazed windows, also known as insulated glass units (IGUs), consist of two panes of glass separated by a spacer. The spacer creates a gap, usually filled with air or an inert gas ...

[Get Price](#)



[Guide to Double Glazed Units , Prentice Glass , Glazing](#)

To kick things off, let's start by demystifying what double glazed units are. These units, often referred to as double glazing or insulated glass units (IGUs), consist of two glass ...

[Get Price](#)



[The Role of Double Glazed Windows in Reducing ...](#)

In this article, readers will learn about the importance and benefits of double glazing in reducing greenhouse gas emissions and achieving energy efficiency. The article will ...

[Get Price](#)



Double glass component entity

What are the parts of a double glazed window? Understanding the parts of a double glazed window can simplify both installation and maintenance. A clear visual ...

[Get Price](#)



How Do Double Glazed Windows Work?

The Basics of Double Glazing Double glazed windows, also known as insulated glass units (IGUs), consist of two panes of glass separated by a spacer. The spacer creates a gap, ...

[Get Price](#)



[The Science Behind Double Glazing: How It Works](#)

Double glazing is a popular choice for homeowners seeking to improve insulation and energy efficiency. But how exactly does double glazing work? This article delves into the science ...

[Get Price](#)



[What are the key components of double glazing?](#)

The double glazed unit, which slots into a window frame, is made up of a number of components. It includes: A spacer bar - this separates the two panels of glass Desiccant - a silicon material ...

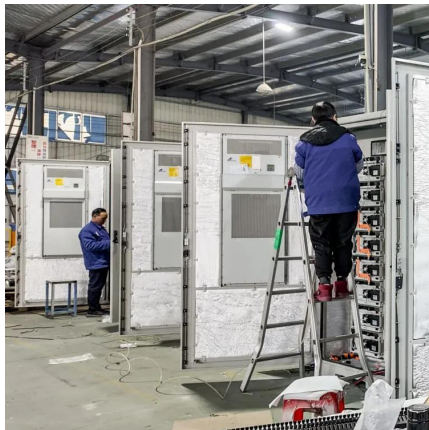
[Get Price](#)



Double Glazed Windows: Components and Benefits

Double glazed windows have become increasingly popular in recent years due to their energy-efficient properties and ability to enhance the comfort and aesthetics of homes ...

[Get Price](#)



Double Glass Units simply supported on two sides: Analytical ...

Insulating Glass Units (IGUs), made of multiple sealed glass panes with gas-filled cavities, are key to thermal and acoustic building insulation. As modern designs demand high ...

[Get Price](#)

Contact Us

For catalog requests, pricing, or partnerships, please visit:
<https://germansolar.co.za>

Scan QR Code for More Information



<https://germansolar.co.za>