

The solar inverter lights up red





Overview

What does a red light on a solar string inverter mean?

Seeing an orange or red light on your solar string inverter is a clear indication that something might be wrong with your system. If your device is not working properly, it could be because of temporary factors like weather or time. But it could also be a sign of bigger issues like system faults or electrical power problems.

What happens if you ignore a red light on a solar inverter?

The red light serves as a clear indication of a fault or warning condition, and ignoring this alert can lead to more extensive damage to the system, potentially affecting both the inverter and the solar panels. Operations under such conditions can result in diminished energy production or even complete system failure.

Why is my inverter showing a red light?

If your inverter is showing a red light, start with a Power Cycle: Turn off the AC disconnect circuit breaker supplying power to the inverter. There should be an “AC DISCONNECT” sticker located on the box, typically right next to the inverter. Then, turn off the DC disconnect (typically built into the inverter).

Why is my solar string inverter light orange?

Observing an orange or red light on your solar string inverter instead of the usual green can signify a problem. It could be related to varying weather conditions, seasonal changes, or actual system faults like electrical issues, software glitches, or component malfunctions.



The solar inverter lights up red



[What Does The Fault Light Mean On A Power ...](#)

Most power inverters are fitted with some visual and audible indicators to communicate the operational state of the inverter. Inverters typically have a "Green" light to indicate that it is ON and a "Red" light to ...

[Get Price](#)

[Why does the red light on the solar inverter ...](#)

A red light on a solar inverter typically indicates that the device has detected a fault or warning condition that needs attention. The nature of this issue can vary widely, ranging from inadequate input voltage due to ...

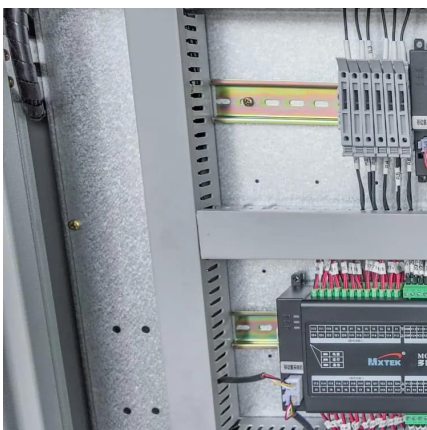
[Get Price](#)



[SolarEdge Error Codes & Fault Codes: Troubleshooting Guide](#)

If your SolarEdge inverter isn't producing power or is flashing unusual alerts, the first clue is often in its lights or display. A SolarEdge green light blinking typically means the ...

[Get Price](#)



[SolarEdge Error Codes & Fault Codes: ...](#)

If your SolarEdge inverter isn't producing power or is flashing unusual alerts, the first clue is often in its lights or display. A SolarEdge green light blinking typically means the system is generating power, but when ...



[Get Price](#)



[My inverter has a red light - what now?](#)

It will take some time for the inverter to boot up and resume normal operation -- 15 minutes even. Most inverter models will show a green light, and state how many thousands ...

[Get Price](#)



[Inverter Status and System Performance Indications](#)

Inverter Status and System Performance Indications Your inverter has a switch and three colored LEDs that indicate system information, such as errors or performance. The following tables ...

[Get Price](#)



[Solar Inverter Showing You A Red Light?](#)

A solar inverter is a device that converts DC electricity produced by solar panels into AC electricity that can be used in homes or businesses. Inverters come in different types, such as string inverters, microinverters, ...

[Get Price](#)





Why does the red light on the solar inverter turn on?

A red light on a solar inverter typically indicates that the device has detected a fault or warning condition that needs attention. The nature of this issue can vary widely, ranging ...

[Get Price](#)



Significance of the inverter LED

Red light Flashing The inverter is experiencing an anomaly. Unplug the 230V socket and the solar panel Wait 2 minutes Reconnect the solar panels The red LED should be ...

[Get Price](#)



Significance of the inverter LED

Red light Flashing The inverter is experiencing an anomaly. Unplug the 230V socket and the solar panel Wait 2 minutes Reconnect the solar panels The red LED should be steady. If not, please contact ...

[Get Price](#)



Solar Inverter Showing You A Red Light? . Sharpe Services

A solar inverter is a device that converts DC electricity produced by solar panels into AC electricity that can be used in homes or businesses. Inverters come in different types, such ...

[Get Price](#)

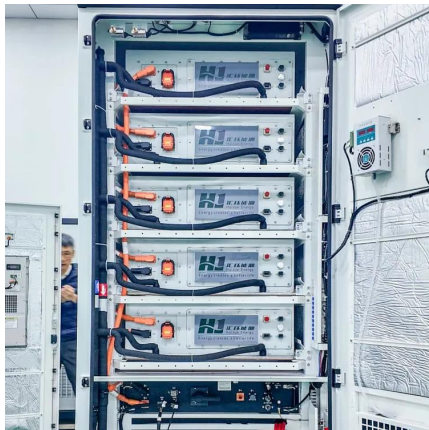




[Why Is My Inverter Showing a Red Light? Common Causes ...](#)

Why is your inverter showing a red light? This simple guide explains the common reasons behind the red indicator and practical solutions you can try at home. Ideal for users ...

[Get Price](#)



[What Does The Fault Light Mean On A Power Inverter?](#)

Most power inverters are fitted with some visual and audible indicators to communicate the operational state of the inverter. Inverters typically have a "Green" light to ...

[Get Price](#)

[Red Light Flashing on Solar Inverter - Why?](#)

Fast read Observing an orange or red light on your solar string inverter instead of the usual green can signify a problem. It could be related to varying weather conditions, seasonal ...

[Get Price](#)



Contact Us

For catalog requests, pricing, or partnerships, please visit:
<https://germansolar.co.za>



Scan QR Code for More Information



<https://germansolar.co.za>