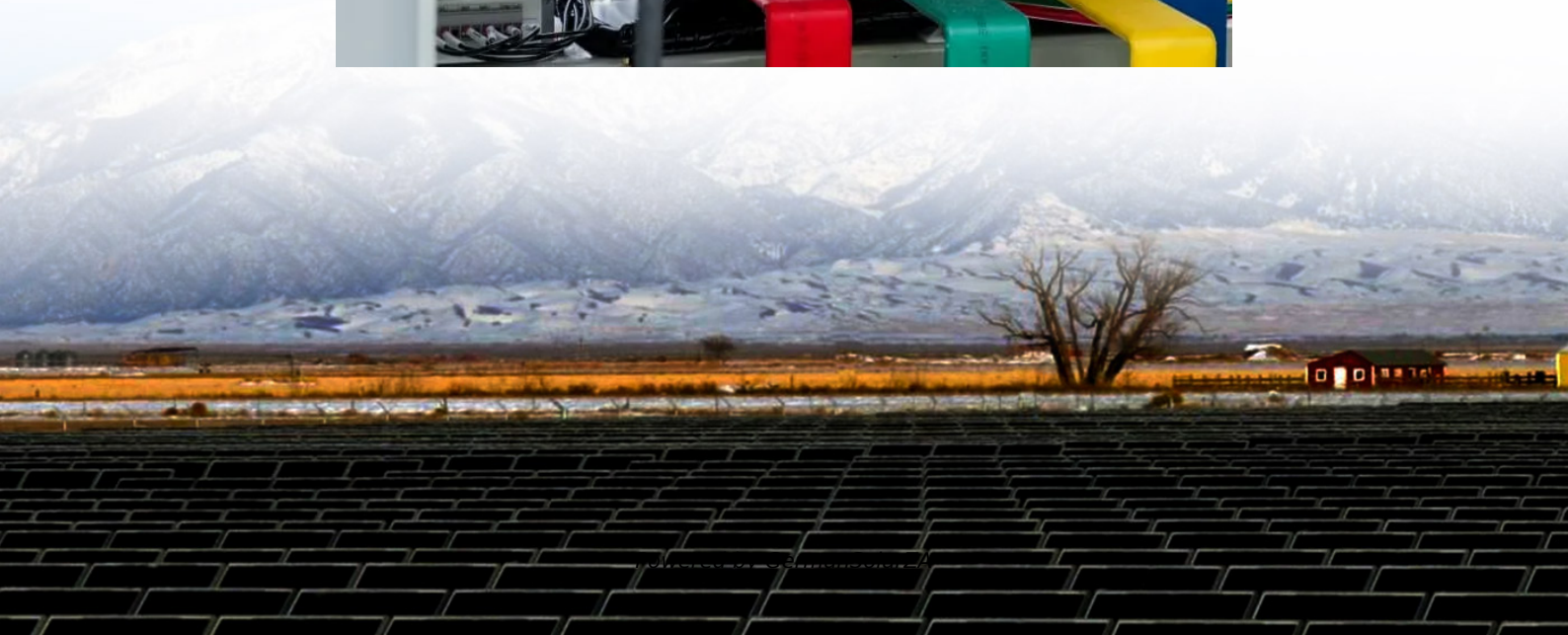


Three-phase full-bridge voltage-source PWM inverter





Overview

What is a three phase voltage source inverter?

Three-phase voltage source inverter The Three-Phase Voltage Source Inverter block implements a three-phase voltage source inverter that generates neutral voltage commands for a balanced three-phase load. Configure the voltage switching function for continuous vector modulation or inverter switch input signals.

What is a three-phase voltage source inverter (VSI) with SPWM?

A three-phase Voltage Source Inverter (VSI) with SPWM (Sinusoidal Pulse Width Modulation) is a type of inverter that converts DC voltage into three-phase AC voltage with sinusoidal waveforms. It works by varying the pulse width of a high-frequency carrier signal according to the instantaneous amplitude of a reference sinusoidal waveform.

What is a three-phase voltage source inverter block?

The Three-Phase Voltage Source Inverter block implements a three-phase voltage source inverter that generates neutral voltage commands for a balanced three-phase load.

Which PWM scheme is used for three-phase voltage source inverters?

The most widely used PWM schemes for three-phase voltage source inverters are carrier-based sinusoidal PWM and space vector PWM (SVPWM). There is an increasing trend of using space vector PWM (SVPWM) because of their easier digital realization and better dc bus utilization.



Three-phase full-bridge voltage-source PWM inverter



[Three Phase Voltage Source Inverter with ...](#)

Introduction A three-phase Voltage Source Inverter (VSI) with SPWM (Sinusoidal Pulse Width Modulation) is a type of inverter that converts DC voltage into three-phase AC voltage with sinusoidal waveforms. It ...

[Get Price](#)

Three-Phase Voltage Source Inverter

The Three-Phase Voltage Source Inverter block implements a three-phase voltage source inverter that generates neutral voltage commands for a balanced three-phase load.

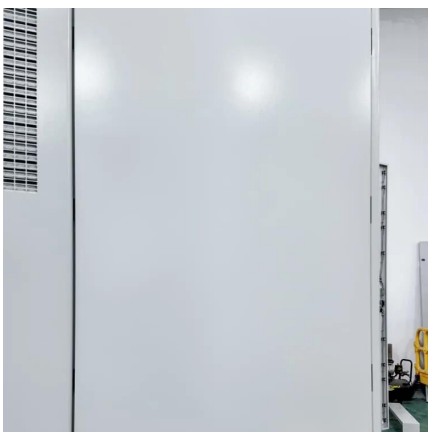
[Get Price](#)



[Pulse Width Modulation \(PWM\) Techniques](#)

Space-Vector Modulation SVM is an advanced pulse width modulation (PWM) technology that is typically employed in three-phase inverter systems. It has advantages such as higher source ...

[Get Price](#)



CHAPTER4

4.1 Introduction In this chapter the three-phase inverter and its functional operation are discussed. In order to realize the three-phase output from a circuit employing dc as the ...

[Get Price](#)



[Three Phase Voltage Source Inverter with SPWM](#)

Introduction A three-phase Voltage Source Inverter (VSI) with SPWM (Sinusoidal Pulse Width Modulation) is a type of inverter that converts DC voltage into three-phase AC ...

[Get Price](#)



[Three-phase inverter reference design for 200-480VAC...](#)

This reference design realizes a reinforced isolated three-phase inverter subsystem using isolated IGBT gate drivers and isolated current/voltage sensors. The ...

[Get Price](#)



Modeling and simulation of three-phase IGBT full-bridge inverter

The three-phase IGBT full bridge inverter circuit has an external independent voltage source V_c of 380 V, three load resistors of 1Ω , three filter capacitors of 1200 μ F, and ...

[Get Price](#)

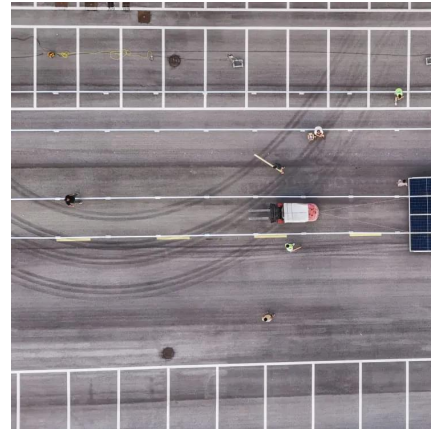


[Coordinated full-bridge inverter PWM control strategy ...](#)



The purpose of the current loop is to constrain the AC current $i_{in}(t)$ to be in phase with the voltage source $v_{in}(t)$. A solution is to consider the converter as an inverter and control ...

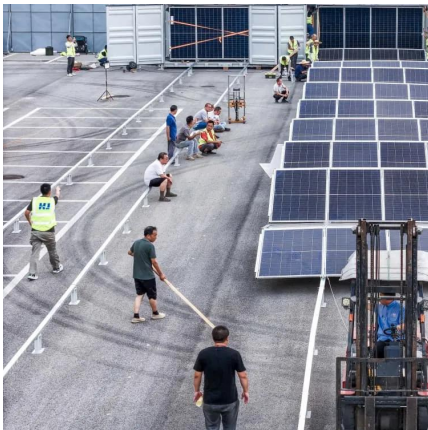
[Get Price](#)



Lecture 23: Three-Phase Inverters

In particular, considering "full-bridge" structures, half of the devices become redundant, and we can realize a 3-phase bridge inverter using only six switches (three half ...

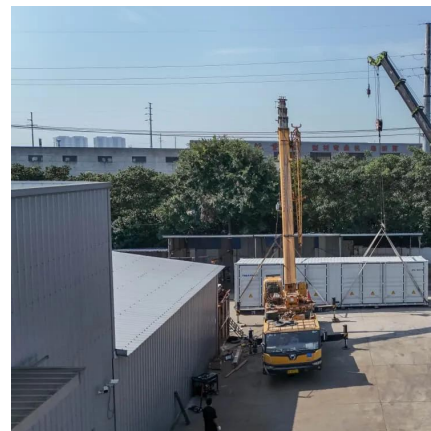
[Get Price](#)



Analysis & Hardware Implementation Of Three-Phase ...

Abstract With advances in solid-state power electronic devices and microprocessors, various pulse-width-modulation (PWM) techniques have been developed for ...

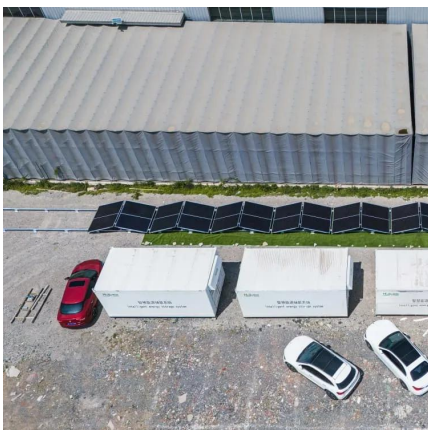
[Get Price](#)



Voltage Source Inverters Control using PWM/SVPWM ...

A number of Pulse width modulation (PWM) schemes are used to obtain variable voltage and frequency supply. The most widely used PWM schemes for three-phase voltage ...

[Get Price](#)



Three-Phase Voltage Source Inverter



The Three-Phase Voltage Source Inverter block implements a three-phase voltage source inverter that generates neutral voltage commands for a balanced three-phase load.

[Get Price](#)



Contact Us

For catalog requests, pricing, or partnerships, please visit:
<https://germansolar.co.za>

Scan QR Code for More Information



<https://germansolar.co.za>