

What is a battery energy storage power station





Overview

What is a battery energy storage system?

A BESS (Battery Energy Storage System) is an integrated solution that stores electrical energy for later use. It is commonly used to store solar or wind power and supply it during peak demand periods, outages, or when electricity prices are high. Where can BESS be used?

.

What are battery storage power stations?

Battery storage power stations are usually composed of batteries, power conversion systems (inverters), control systems and monitoring equipment. There are a variety of battery types used, including lithium-ion, lead-acid, flow cell batteries, and others, depending on factors such as energy density, cycle life, and cost.

How does a battery storage system work?

A battery storage system can be charged by electricity generated from renewable energy, like wind and solar power. Intelligent battery software uses algorithms to coordinate energy production and computerised control systems are used to decide when to store energy or to release it to the grid.

Why is battery storage important?

Battery storage is an essential component of the energy transition, accelerating the shift away from fossil fuels towards a fully sustainable energy system. These systems enable the storage of renewable energy, ensuring it can be released when demand is highest.



What is a battery energy storage power station



What Is BESS? a Comprehensive Overview of Battery Energy Storage

BESS, short for Battery Energy Storage System, is an advanced energy storage technology solution widely adopted in the renewable energy sector. Within the industry, it is ...

[Get Price](#)



Battery Energy Storage Systems Explained: What They Are ...

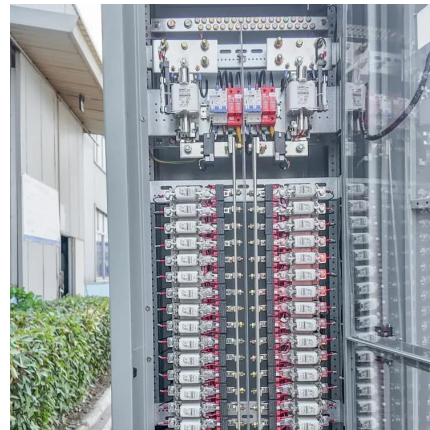
A battery energy storage system stores energy in batteries for later use, balancing supply and demand while supporting renewable energy integration.

[Get Price](#)

[Battery energy storage system \(BESS\) ...](#)

Topic last reviewed: May 2025 Sectors: Downstream, Midstream, Upstream Overview Battery energy storage systems (BESS) use rechargeable battery technology, normally lithium ion (Li-ion) to store ...

[Get Price](#)



[Battery Energy Storage: How It Works and ...](#)

Learn how battery energy storage systems work, their key components, and why they are vital for reliable, cost-efficient, and sustainable power.

[Get Price](#)



Battery energy storage system (BESS) integration into power ...

Topic last reviewed: May 2025 Sectors:
Downstream, Midstream, Upstream Overview
Battery energy storage systems (BESS) use rechargeable battery technology, ...

[Get Price](#)



Battery energy storage systems (BESS) basics

Renewables - Battery energy storage aligns solar and wind generation peaks with demand peaks.
Residential and Commercial - lower energy costs, improves load factor, and manages demand peaks. Utility ...

[Get Price](#)



Battery storage power station - a comprehensive guide

A battery storage power station, also known as an energy storage power station, is a facility that stores electrical energy in batteries for later use. It plays a vital role in the modern ...

[Get Price](#)

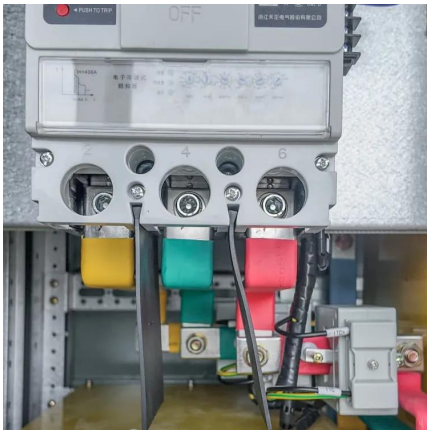


What is a battery storage power station?



What is a battery storage power station?, QCEPOWER
Understanding Battery Storage Power Stations Battery storage power stations are large-scale energy storage systems that use ...

[Get Price](#)



[Battery energy storage systems \(BESS\) basics](#)

Renewables - Battery energy storage aligns solar and wind generation peaks with demand peaks.
Residential and Commercial - lower energy costs, improves load factor, and ...

[Get Price](#)



[What is a battery energy storage station? , NenPower](#)



[Battery Energy Storage: How It Works and Why It's Important](#)

Learn how battery energy storage systems work, their key components, and why they are vital for reliable, cost-efficient, and sustainable power.

[Get Price](#)



What is Battery Storage?

Battery energy storage systems (BESS) support renewable energy integration and grid stability, ensuring a flexible, clean power supply for the future.

[Get Price](#)



A battery energy storage station is a facility designed to store electrical energy in battery systems for later use, primarily to balance supply and demand, support grid stability, ...

[Get Price](#)



[Battery Energy Storage Systems Explained: ...](#)

A battery energy storage system stores energy in batteries for later use, balancing supply and demand while supporting renewable energy integration.

[Get Price](#)



[What Is BESS? a Comprehensive Overview of ...](#)

BESS, short for Battery Energy Storage System, is an advanced energy storage technology solution widely adopted in the renewable energy sector. Within the industry, it is commonly referred to ...

[Get Price](#)



What is battery storage?

Battery storage, or battery energy storage systems (BESS), are devices that enable energy from renewables, like solar and wind, to be stored and then released when the power is needed most. Lithium-ion batteries, ...

[Get Price](#)



What is battery storage?



Battery storage, or battery energy storage systems (BESS), are devices that enable energy from renewables, like solar and wind, to be stored and then released when the power ...

[Get Price](#)



Contact Us

For catalog requests, pricing, or partnerships, please visit:
<https://germansolar.co.za>

Scan QR Code for More Information



<https://germansolar.co.za>