

What is the use of wireless outdoor base station





Overview

What is a wireless base station?

A base station represents an access point for a wireless device to communicate within its coverage area. It usually connects the device to other networks or devices through a dedicated high bandwidth wire of fiber optic connection. Base stations typically have a transceiver, capable of sending and receiving wireless signals;.

Why are base stations important?

Base stations are the backbone of wireless communication networks, playing a pivotal role in signal transmission, network reliability, and high-speed data connectivity. As technology evolves, the importance of base stations will continue to grow, addressing new challenges and supporting the ever-expanding demand for wireless communication services.

What is a base station in telecommunications?

In telecommunications, a base station is a fixed transceiver that serves as the main communication point for one or more wireless mobile client devices. It not only connects wireless devices to each other but also links them to other networks or devices, often through dedicated high-bandwidth wired or fiber optic connections.

How do base stations work?

Second, base stations send and receive signals to and from mobile devices, enabling the Data transmission and communication. Finally, the base stations connect to the core network infrastructure so that the mobile devices can access the broader network and its resources. 3.



What is the use of wireless outdoor base station



Base Stations

What is Base Station? A base station represents an access point for a wireless device to communicate within its coverage area. It usually connects the device to other networks or devices through a dedicated ...

[Get Price](#)

What Is the Role of a Base Station in Wireless Communication?

Base stations are the backbone of wireless communication networks, playing a pivotal role in signal transmission, network reliability, and high-speed data connectivity. As ...

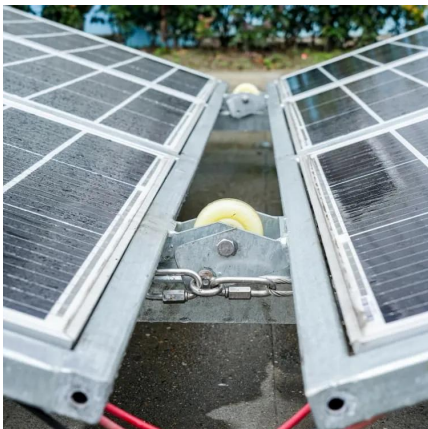
[Get Price](#)



Base Station Definition

A base station is a fixed wireless device that serves as a hub for other wireless devices and provides a bridge to another network. In a computer networking context, a base station broadcasts a wireless signal ...

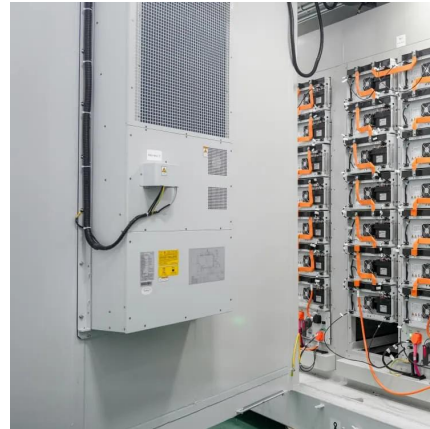
[Get Price](#)



Wireless Base Station

A Wireless Base Station is a key component of a wireless network that serves as an access point for connecting devices wirelessly. It is typically the first device installed in the network and ...

[Get Price](#)



Base Stations

What is Base Station? A base station represents an access point for a wireless device to communicate within its coverage area. It usually connects the device to other ...

[Get Price](#)



[5GHz 300Mbps Outdoor Wireless Base Station](#)

Long-Distance Wireless Data Transmission Two external RP-SMA antenna interfaces allow the Outdoor Wireless Base Station to integrate seamlessly with TP-LINK's line ...

[Get Price](#)



[Understanding Wireless Base Stations: ...](#)

A wireless base station is an important component of cellular networks. It serves as a hub that connects mobile devices to the broader network infrastructure, enabling seamless communication between ...

[Get Price](#)





[5GHz 300Mbps Outdoor Wireless Base ...](#)

Long-Distance Wireless Data Transmission Two external RP-SMA antenna interfaces allow the Outdoor Wireless Base Station to integrate seamlessly with TP-LINK's line of sector and dish antennas. Where long- ...

[Get Price](#)



The Role of Directional Antennas in Outdoor WiFi Base Stations

Outdoor WiFi base stations, such as those manufactured by Signal, help create the internet infrastructure for various devices outdoors. One key element in these base stations ...

[Get Price](#)

Base Station Definition

A base station is a fixed wireless device that serves as a hub for other wireless devices and provides a bridge to another network. In a computer networking context, a base ...

[Get Price](#)



Understanding Wireless Base Stations: Definition and Function

A wireless base station is an important component of cellular networks. It serves as a hub that connects mobile devices to the broader network infrastructure, enabling seamless ...

[Get Price](#)





[5G Outdoor Macro Base Station in the Real World: 5 Uses ...](#)

As 5G technology continues its rapid deployment worldwide, outdoor macro base stations are becoming a cornerstone of connectivity infrastructure. These large, high-power ...

[Get Price](#)



[Understanding Base Stations: The Backbone of Wireless ...](#)

Conclusion Base stations are the backbone of modern wireless communication networks. They ensure that mobile devices can connect to the internet, make calls, and send ...

[Get Price](#)



What Is A Base Station?

A base station is an integral component of wireless communication networks, serving as a central point that manages the transmission and reception of signals between ...

[Get Price](#)

Contact Us

For catalog requests, pricing, or partnerships, please visit:
<https://germansolar.co.za>



Scan QR Code for More Information



<https://germansolar.co.za>