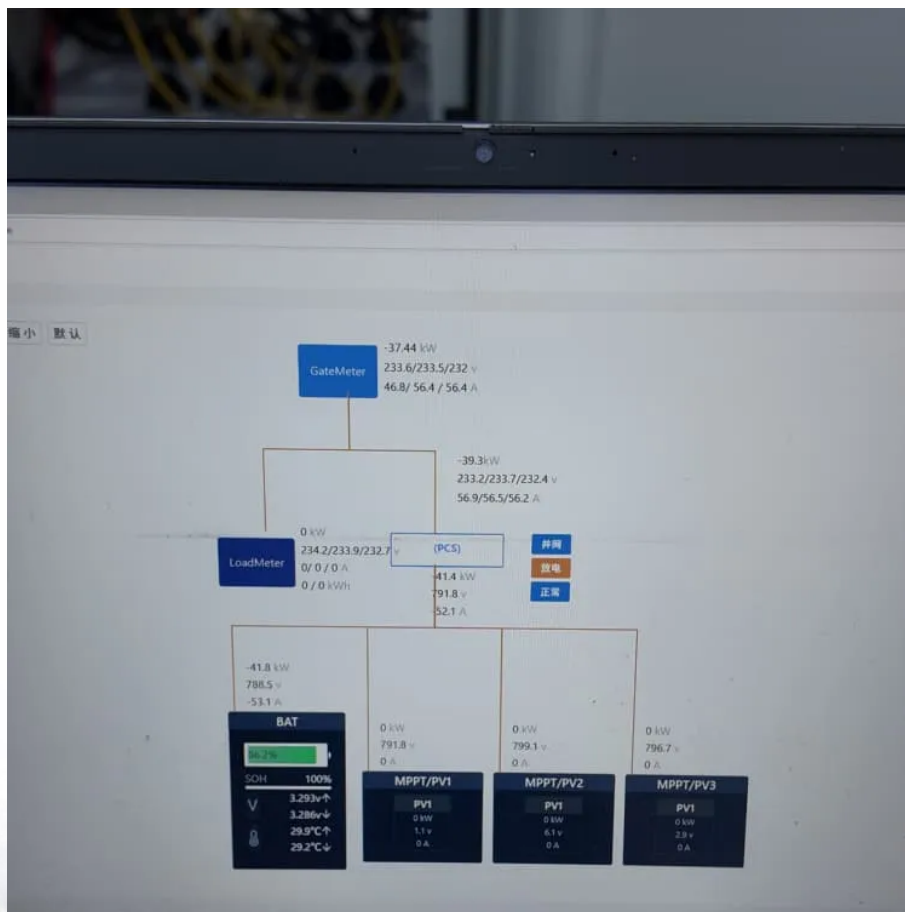


What's inside the lithium iron phosphate battery energy storage cabinet





Overview

What is lithium iron phosphate battery?

Lithium iron phosphate battery has a high performance rate and cycle stability, and the thermal management and safety mechanisms include a variety of cooling technologies and overcharge and overdischarge protection. It is widely used in electric vehicles, renewable energy storage, portable electronics, and grid-scale energy storage systems.

What is lithium iron phosphate (LiFePO₄)?

Lithium Iron Phosphate (LiFePO₄) battery cells are quickly becoming the go-to choice for energy storage across a wide range of industries.

What is battery energy storage system?

Battery Energy Storage System is a fundamental technology in the renewable energy industry. The system comprises a large enclosure housing multiple batteries designed to store electricity for later use. While various batteries can be utilized, the industry-standard uses Lithium-Iron Phosphate (LiFePO₄) batteries.

Are lithium iron phosphate batteries reliable?

Batteries with excellent cycling stability are the cornerstone for ensuring the long life, low degradation, and high reliability of battery systems. In the field of lithium iron phosphate batteries, continuous innovation has led to notable improvements in high-rate performance and cycle stability.



What s inside the lithium iron phosphate battery energy storage ca



[How Do Lithium Iron Phosphate Battery Packs Work and ...](#)

Lithium iron phosphate (LiFePO₄) battery packs are a type of rechargeable battery known for their safety, longevity, and environmental friendliness. They operate by transferring lithium ions ...

[Get Price](#)

[Understanding LiFePO₄ Batteries: A Comprehensive Guide](#)

Introduction In the realm of energy storage solutions, Lithium Iron Phosphate (LiFePO₄) batteries have emerged as a revolutionary technology, offering unparalleled ...

[Get Price](#)



[Why Lithium Iron Phosphate Energy Storage Containers Are](#)

Ever wondered how the world plans to store energy for a rainy day--literally? Enter lithium iron phosphate (LiFePO₄) energy storage containers, the unsung heroes of modern ...

[Get Price](#)



Understanding the Structure and Function of Lithium Iron Phosphate

Lithium iron phosphate (LiFePO₄) batteries are popular in many applications due to their high energy density, long cycle life, and safety features. These batteries are used in ...



[Get Price](#)



[Everything You Need to Know About LiFePO4 Battery Cells: A](#)

Lithium Iron Phosphate (LiFePO4) battery cells are quickly becoming the go-to choice for energy storage across a wide range of industries. Renowned for their remarkable ...

[Get Price](#)

[Lithium Iron Phosphate Battery Solar: Complete 2025 Guide](#)

Lithium iron phosphate batteries use lithium iron phosphate (LiFePO4) as the cathode material, combined with a graphite carbon electrode as the anode. This specific ...

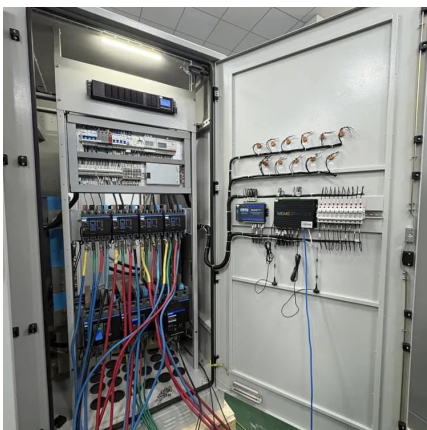
[Get Price](#)



[Recent Advances in Lithium Iron Phosphate Battery ...](#)

Lithium iron phosphate (LFP) batteries have emerged as one of the most promising energy storage solutions due to their high safety, long cycle life, and environmental ...

[Get Price](#)





What is Battery Energy Storage? Inside the System Structure

What is a Battery Energy Storage System? A Battery Energy Storage System is a fundamental technology in the renewable energy industry. The system comprises a large enclosure housing ...

[Get Price](#)



What Are the Components of the Lithium Iron Phosphate Battery ...

Lithium iron phosphate batteries have a series of unique advantages such as high working voltage, high energy density, long cycle life, and environmental protection, and ...

[Get Price](#)

Lithium Iron Phosphate

Lithium Iron Phosphate abbreviated as LFP is a lithium ion cathode material with graphite used as the anode. This cell chemistry is typically lower energy density than NMC or NCA, but is also seen as being safer.

[Get Price](#)



Lithium Iron Phosphate

Lithium Iron Phosphate abbreviated as LFP is a lithium ion cathode material with graphite used as the anode. This cell chemistry is typically lower energy density than NMC or NCA, but is also ...

[Get Price](#)



Contact Us

For catalog requests, pricing, or partnerships, please visit:
<https://germansolar.co.za>

Scan QR Code for More Information



<https://germansolar.co.za>