

# Which components of a 5g base station consume power





## Overview

---

Today we see that a major part of energy consumption in mobile networks comes from the radio base station sites and that the consumption is stable. We can also see that even in densely deployed networks, as i.

Should power consumption models be used in 5G networks?

This restricts the potential use of the power models, as their validity and accuracy remain unclear. Future work includes the further development of the power consumption models to form a unified evaluation framework that enables the quantification and optimization of energy consumption and energy efficiency of 5G networks.

Do base stations dominate the energy consumption of the radio access network?

Furthermore, the base stations dominate the energy consumption of the radio access network. Therefore, it is reasonable to focus on the power consumption of the base stations first, while other aspects such as virtualization of compute in the 5G core or the energy consumption of user equipment should be considered at a later stage.

What should be considered in a 5G network?

The further completion of the map of power models (Fig. 2) and systematization of their features as well as the comparison is also part of the future work. Lastly, the aspects of computing (network function virtualization) and functional split options of the RAN need to be considered for 5G networks as well.

Can 5G reduce energy consumption?

However, the energy consumption of 5G networks is today a concern. In recent years, the design of new methods for decreasing the RAN power consumption has attracted interest from both the research community and standardization bodies, and many energy savings solutions have been proposed.



## Which components of a 5g base station consume power

---



### [Why does 5g base station consume so much ...](#)

The power consumption of the 5G base station mainly comes from the AU module processing and conversion and high power-consuming high radio frequency signals, the extremely high-algorithm and high ...

[Get Price](#)

### What is 5G Energy Consumption?

The 5G network is a dynamic system that consumes energy continually and responds to spikes in network activity. Over 70% of this energy is consumed by RAN ...

[Get Price](#)



### [What is the Power Consumption of a 5G Base Station?](#)

Why is 5G Power Consumption Higher? 1. Increased Data Processing and Complexity These 5G base stations consume about three times the power of the 4G stations. ...

[Get Price](#)



### [A technical look at 5G energy consumption and performance](#)

How can 5G increase performance and ensure low energy consumption? Find out in our latest Research blog post.



## Comparison of Power Consumption Models for 5G Cellular Network Base

This paper conducts a literature survey of relevant power consumption models for 5G cellular network base stations and provides a comparison of the models. It highlights ...

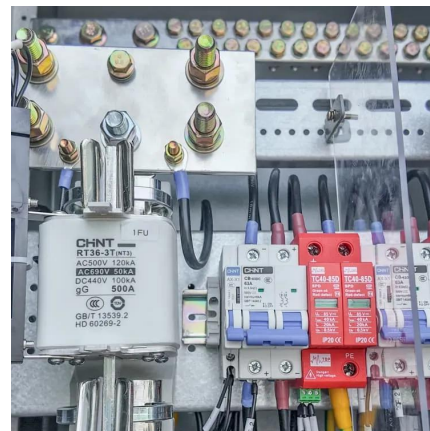
[Get Price](#)



## What Components Make Up a 5G Base Station?

Analysis of 5G base station cost breakdown in China: component-level estimates for BBU/AAU, power/auxiliaries and civil works, with a ~450,000 yuan total estimate.

[Get Price](#)



## Basic components of a 5G base station

The basic components of a 5G BS, which are illustrated in Figure 1 [20], mainly include communication equipment and power supply equipment.

[Get Price](#)





### Basic components of a 5G base station

The basic components of a 5G BS, which are illustrated in Figure 1 [20], mainly include communication equipment and power supply equipment.

[Get Price](#)



### **Optimal energy-saving operation strategy of 5G base station ...**

To further explore the energy-saving potential of 5 G base stations, this paper proposes an energy-saving operation model for 5 G base stations that incorporates ...

[Get Price](#)

### Power Consumption Modeling of 5G Multi-Carrier Base ...

However, there is still a need to understand the power consumption behavior of state-of-the-art base station architectures, such as multi-carrier active antenna units (AAUs), ...

[Get Price](#)



### Power consumption based on 5G communication

This paper proposes a power control algorithm based on energy efficiency, which combines cell breathing technology and base station sleep technology to reduce base station ...

[Get Price](#)



### [Why does 5g base station consume so much power and how ...](#)

The power consumption of the 5G base station mainly comes from the AU module processing and conversion and high power-consuming high radio frequency signals, the ...

[Get Price](#)



## Contact Us

---

For catalog requests, pricing, or partnerships, please visit:  
<https://germansolar.co.za>

### Scan QR Code for More Information



<https://germansolar.co.za>