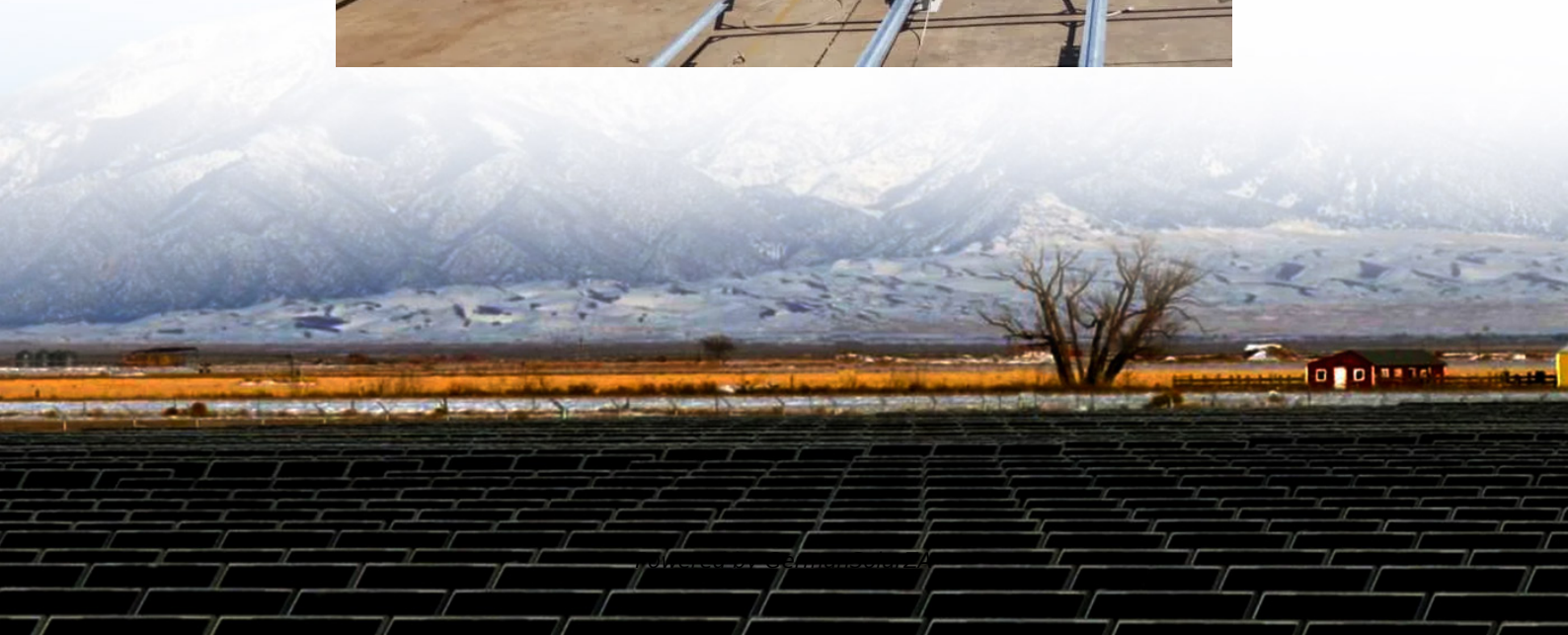


Will connecting the inverter to the battery consume power





Overview

Do inverters need batteries?

For most residential and small commercial setups, the traditional battery and power inverter combo is the preferred choice to ensure continuous power supply during blackouts. So, while some inverter types do not require batteries, if your priority is uninterrupted backup power, investing in a quality battery in inverter system is essential.

Why do you need a battery connection for an inverter?

The DC comes from the batteries which are used to power the inverter, and this inverter transforms the power into AC usable by bulbs, fans, and other small electrical devices. You must go through battery connection for inverter while considering the risks of electrical shocks, damage to devices, so that potential fire risks are avoided.

How much power does an inverter use?

An inverter draws power from a battery depending on its efficiency, typically over 92%. For a connected load of 250 watts, the inverter uses less than 270 watts from the battery. This value includes energy conversion losses. Understanding inverter specifications helps optimize power consumption and battery voltage for better performance.

How does battery condition affect a 12V inverter?

For instance, a 12V inverter operating on a 10.5V battery may increase power draw inconsistently, reducing efficiency. Battery condition significantly impacts power draw. A deteriorating or poorly maintained battery may have higher internal resistance, which leads to increased losses when the inverter draws power.



Will connecting the inverter to the battery consume power



[How to Wire Inverter to Battery - No Sparks, ...](#)

How to wire inverter to battery without frying your gear? Discover the safest, smartest method electricians recommend.

[Get Price](#)

Inverter Power Draw: How Much Power Does An Inverter Use From A Battery

Understanding inverter power draw is crucial for efficiently managing battery usage and ensuring longer operational life. As we explore this topic further, we will discuss how to ...

[Get Price](#)



How to Connect an Inverter to a Battery: Step-by-Step Guide ...

Properly connecting your inverter to a battery is essential for a reliable and efficient power backup system. By following the steps outlined in this guide, you can ensure a safe and ...

[Get Price](#)



Battery connection for inverter

Before trying to figure out battery connection for inverter, there is a need to explain the working principles of batteries and inverters. Inverters are used to transfer power from a inverter battery to the desired ...



[Get Price](#)



[Inverter Battery Connection: Essential Tips For Safe And ...](#)

Learn essential tips for safe and efficient inverter battery connection. Discover step-by-step guides, wiring techniques, and troubleshooting tips to optimize your power backup system's ...

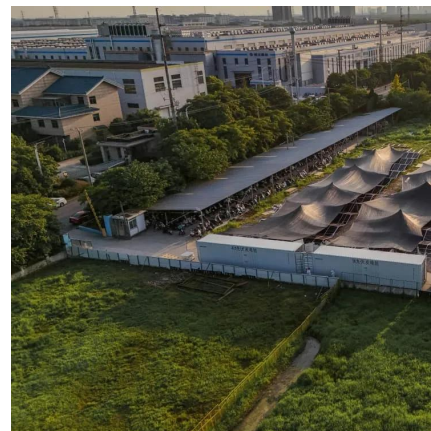
[Get Price](#)



[Will a Power Inverter Drain My Battery?](#)

A power inverter can drain your battery, even when it's turned off, due to standby power consumption. The effect is even more significant when the inverter is actively running connected devices.

[Get Price](#)



[Inverter Battery Connection: Essential Tips For Safe And ...](#)

Learn essential tips for safe and efficient inverter battery connection. Discover step-by-step guides, wiring techniques, and troubleshooting tips to optimize your power ...

[Get Price](#)



Battery connection for inverter



Before trying to figure out battery connection for inverter, there is a need to explain the working principles of batteries and inverters. Inverters are used to transfer power from a ...

[Get Price](#)



How Much Electricity Does an Inverter Consume During Battery ...

Inverters do consume electricity during battery charging, but the amount varies widely. Efficiency losses, battery type, and inverter design all play critical roles. Many assume ...

[Get Price](#)



Connecting Your Battery and Inverter for Optimal Performance

Learn how to properly connect a battery to an inverter and ensure a reliable power source for your devices and appliances.

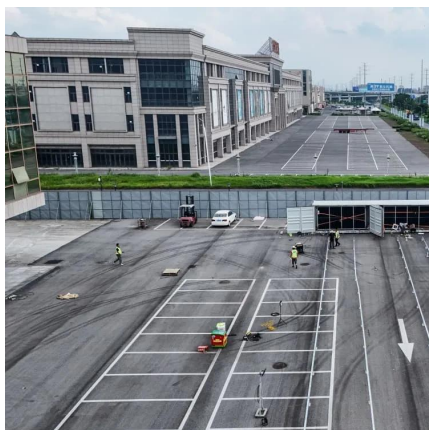
[Get Price](#)



Do Inverters Use a Lot of Battery Power? - ...

Inverter Power Draw While battery inverters do consume a small amount of power to operate, this is typically negligible compared to the power they provide. The inverter's power draw, often referred to as the ...

[Get Price](#)



Ultimate Guide to Battery in Inverter: Choose &



Maintain Right

Discover how to choose, maintain, and maximize your battery in inverter for reliable backup power. Expert tips on inverter batteries, lifespan, and safety included!

[Get Price](#)



[Will a Power Inverter Drain My Battery? Here's the Answer!](#)

A power inverter can drain your battery, even when it's turned off, due to standby power consumption. The effect is even more significant when the inverter is actively running ...

[Get Price](#)



[How to Wire Inverter to Battery - No Sparks, Just Power](#)

How to wire inverter to battery without frying your gear? Discover the safest, smartest method electricians recommend.

[Get Price](#)



[How to Connect an Inverter to a Battery: Step ...](#)

Properly connecting your inverter to a battery is essential for a reliable and efficient power backup system. By following the steps outlined in this guide, you can ensure a safe and seamless setup.

[Get Price](#)



[Do Inverters Use a Lot of Battery Power? - leaptrend](#)



Inverter Power Draw While battery inverters do consume a small amount of power to operate, this is typically negligible compared to the power they provide. The inverter's power ...

[Get Price](#)



Contact Us

For catalog requests, pricing, or partnerships, please visit:
<https://germansolar.co.za>

Scan QR Code for More Information



<https://germansolar.co.za>